

# COMMERCIAL LAUNDRY CATALOG



**A1 AMERICAN**  
QUALITY SERVICE VALUE  
— SINCE 1911 —

---

## TABLE OF CONTENTS

*p.06* **Terry Towels**

*p.18* **Sheets**

*p.27* **Healthcare Sheets**

*p.33* **Blankets**

*p.40* **Underpads**

*p.42* **Other Essentials**

**Gowns**

**Pillows**

**Robes**

**Clothing Protectors**

**Other Items**



# HIGH PERFORMANCE AND AFFORDABLE PRODUCTS



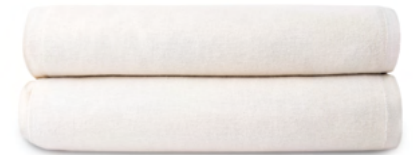
## TOWELS

White, bright, long-lasting, and absorbent



## SHEETING

Soft feel, durable, wide assortment of collections including microfiber and knitted fitted



## BLANKETS

Thermal, terry, and bath blankets



## UNDERPADS

Best in performance, absorbency, and guest comfort



## OTHER ESSENTIALS

Gowns, pillows, robes, clothing protectors, mops, aprons, and dish towels

# SUPPLY SOLUTIONS MADE SIMPLE™



# DIVERSIFIED MANUFACTURING POINTS

## • PAKISTAN

- Towels
- Sheets

## • CHINA

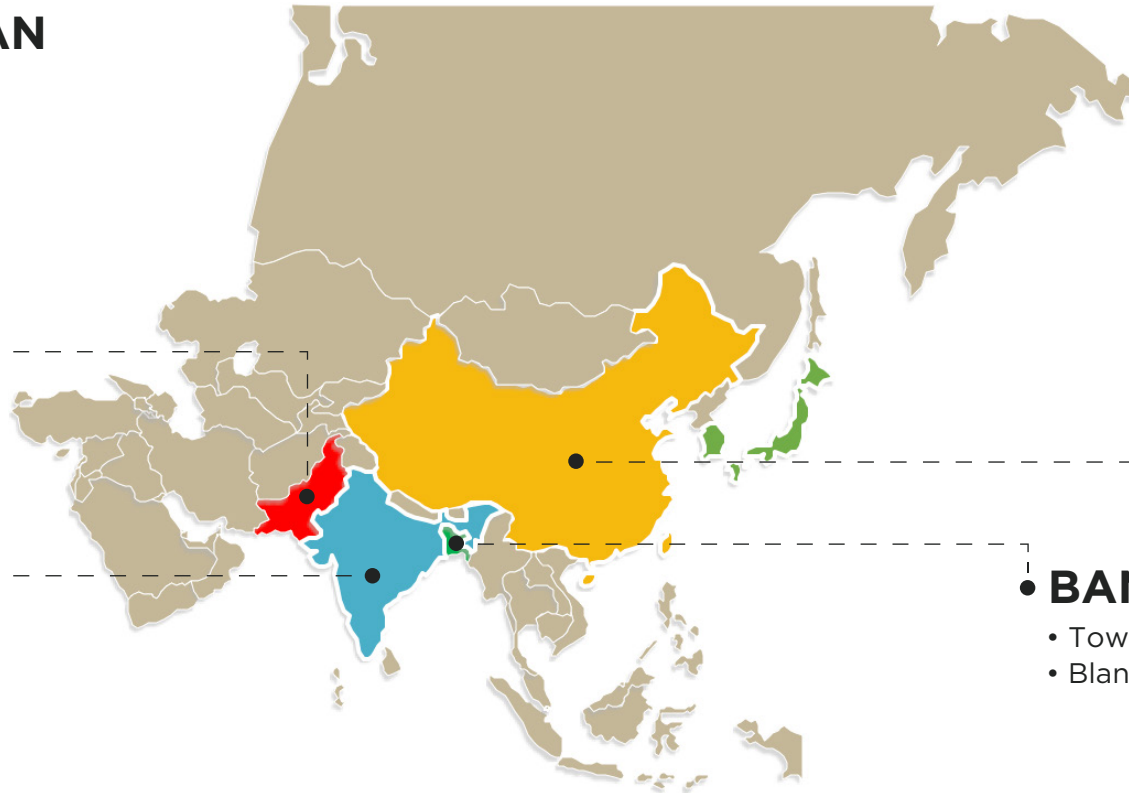
- Sheets
- Amenities
- Bedding Textiles
- Kitchen Items

## • INDIA

- Towels
- Sheets
- Blankets

## • BANGLADESH

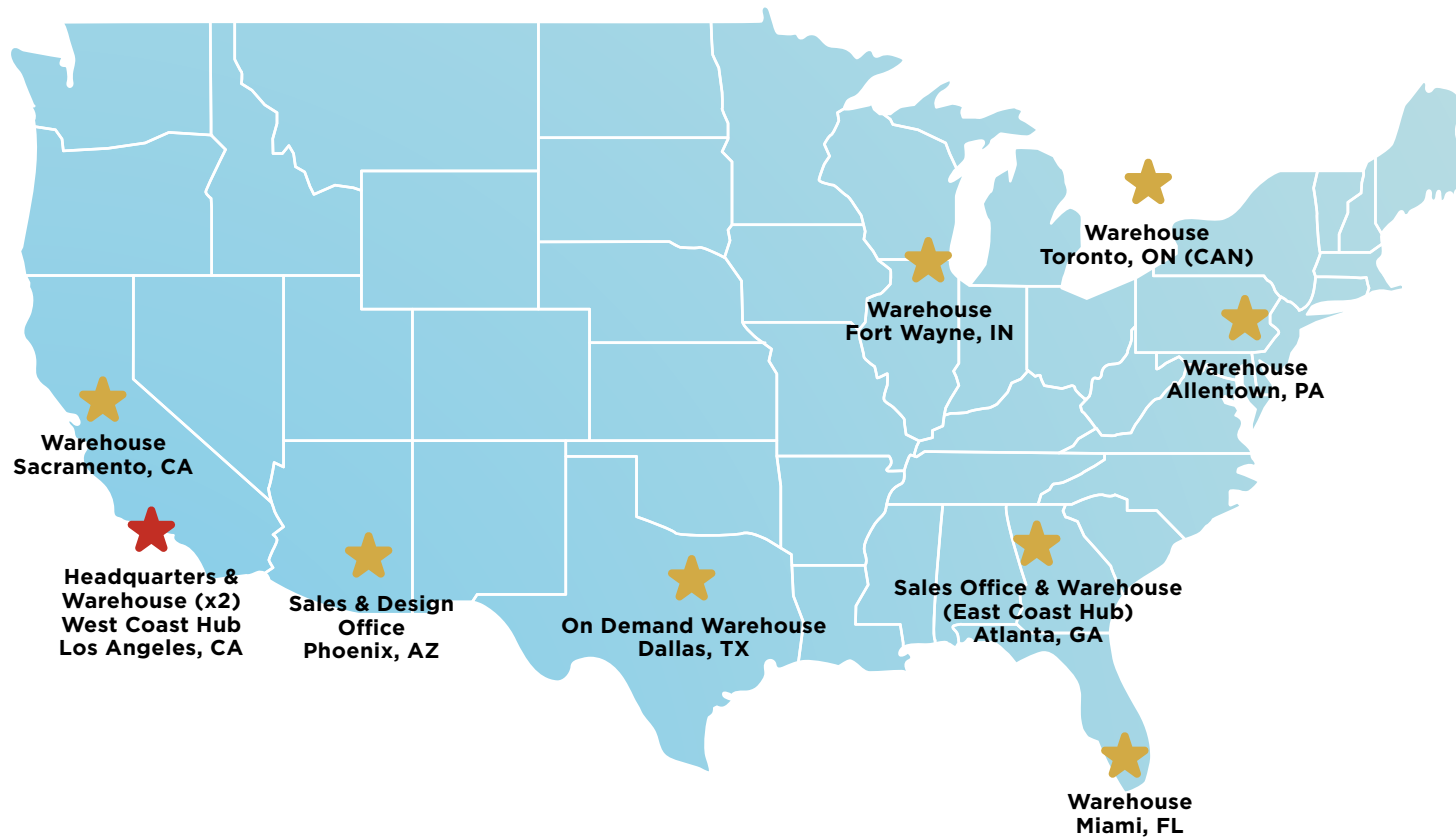
- Towels
- Blankets





# NATIONWIDE DISTRIBUTION

Nationwide import and stocking through strategically located and operated distribution centers



## LOCATIONS

Los Angeles, CA  
Sacramento, CA  
Fort Wayne, IN  
Atlanta, GA  
Allentown, PA  
Toronto, Canada  
Miami, FL



## TERRY TOWELS COLLECTION

### VALUE



**PREMIUM TERRY  
TOWELS**



**GOLDEN CAMELOT  
TOWELS**



**GOLDEN JEWEL  
TOWELS**

### SUPERIOR



**GOLDEN TOUCH  
TOWELS WHITE**



**GOLDEN TOUCH  
TOWELS ECRU**

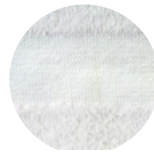


**UTILITY  
TOWELS**



**GOLDEN JEWEL  
CABANA POOL  
TOWELS**

## PREMIUM TERRY



**Premium Terry is our most affordable towel line with a cam border.**

- Premium Terry offers great absorbency, durability and dries quickly.
- It is made from 100% cotton utilizing lock stitched hemming to prevent unraveling.
- The line was made for the institutional hospitality, healthcare and health club markets to make a quality impression, while still priced very affordably.
- Premium Terry is packed in a bale-packed compressed bulk format which benefits our environment by reducing its carbon footprint.

### PREMIUM TERRY

*100% Cotton, Cam Border*

| ITEM        | SIZE      | WEIGHT   | CASE PACK | ITEM NUMBER      |
|-------------|-----------|----------|-----------|------------------|
| Wash Cloths | 12" x 12" | .75 lb.  | 100 dz.   | TWT12X12-LT      |
|             | 12" x 12" | 1.00 lb. | 50 dz.    | TWT12X12         |
| Hand Towels | 15" x 25" | 2.25 lb. | 25 dz.    | TWT15X25         |
|             | 16" x 27" | 2.50 lb. | 25 dz.    | TWT16X27         |
| Bath Towels | 22" x 44" | 5.75 lb. | 25 dz.    | TWT22X44-(25/DZ) |
|             | 24" x 48" | 8.00 lb. | 10 dz.    | TWT24X48-8       |
|             | 24" x 50" | 9.50 lb. | 10 dz.    | TWT24X50         |
| Bath Mats   | 18" x 24" | 5.00 lb. | 25 dz.    | TWT18X24         |
|             | 20" x 30" | 6.50 lb. | 10 dz.    | TWT20X30         |







TERRY TOWELS COLLECTION

GOLDEN CAMELOT



**Golden Camelot is our popular and cost-effective towel line, designed to out-perform standard terry towels, while retaining durability and comfort**

- These towels have a cam border made from 86% cotton/14% polyester blended yarn for reduced shrinkage and longer lifespan.
- The sides are lock stitched hemming to prevent unraveling.
- The line was made for the valor driven hospitality, institutional, healthcare and health club markets to make a quality impression, while still priced very affordably.
- Golden Camelot is packed in a bale-packed compressed bulk format which benefits our environment by reducing its carbon footprint.

GOLDEN CAMELOT

86% Cotton 14% Polyester, Cam Border

| ITEM                      | SIZE      | WEIGHT    | CASE PACK | ITEM NUMBER    |
|---------------------------|-----------|-----------|-----------|----------------|
| Wash Cloths               | 12" x 12" | .75 lb.   | 50 dz.    | TWGC12X12LT    |
|                           | 12" x 12" | 1.00 lb.  | 50 dz.    | TWGC12X12      |
| Hand Towels               | 15" x 25" | 2.50 lb.  | 25 dz.    | TWGC15X25      |
|                           | 16" x 27" | 2.75 lb.  | 25 dz.    | TWGC16X27HW    |
| Bath Towels               | 22" x 44" | 6.00 lb.  | 25 dz.    | TWGC22X44HW-25 |
|                           | 24" x 48" | 8.00 lb.  | 10 dz.    | TWGC24X48HW    |
|                           | 24" x 50" | 10.00 lb. | 10 dz.    | TWGC24X50HW    |
|                           | 25" x 52" | 12.00lb   | 10 dz.    | TWGC25X52-10   |
| Bath Mat (Golden Square*) | 20" x 30" | 7.00 lb.  | 10 dz.    | TWGS20X30      |

*\*Golden Square Bath Mats are made of 86% Cotton/14% Polyester and feature a simple square pattern border*





## TERRY TOWELS COLLECTION

### GOLDEN JEWEL



**A1 American Golden Jewel is a quality mid-range towel line with a cam border.**

- 86/14% Cotton/Polyester blend
- Great absorbency for quick dry solutions
- Double and lock stitched hemming to prevent hems from unraveling
- The towel has a soft, plush hand feel and offers excellent absorbency and dries quickly.
- The line was specifically crafted for the hospitality market to make a lasting, quality impression, while at the same time, still priced affordably
- Golden Jewel is packed in condensed bulk format to be eco-friendly and reduce carbon footprint

### GOLDEN JEWEL

*86% Ring-Spun Cotton 14% Polyester, Cam Border*

| ITEM        | SIZE      | WEIGHT    | CASE PACK | ITEM NUMBER    |
|-------------|-----------|-----------|-----------|----------------|
| Wash Cloths | 12" x 12" | 1.00 lb.  | 50 dz.    | TWGJ12X12      |
| Hand Towels | 16" x 27" | 3.25 lb.  | 25 dz.    | TWGJ16X27HW    |
| Bath Towels | 22" x 44" | 6.00 lb.  | 25 dz.    | TWGJ22X44      |
|             | 24" x 48" | 8.00 lb.  | 10 dz.    | TWGJ24X48HW-10 |
|             | 24" x 50" | 10.50 lb. | 10 dz.    | TWGJ24X50HW    |
|             | 25" x 52" | 12.00 lb. | 5 dz.     | TWGJ25X52      |
|             | 27" x 54" | 14.00 lb. | 4 dz.     | TWGJ27X54      |







## TERRY TOWELS COLLECTION

### GOLDEN TOUCH WHITE



**A1 American Golden Touch-white is a best-selling towel line with a distinct Herringbone Dobby border.**

- 100% ringspun cotton with a Herringbone Dobby border design
- Soft and delicate feel with excellent absorbency and quick dry solution
- Crafted uniquely for the hospitality market with affordable pricing
- Includes double and lock stitched hemming
- Packed in condensed bulk format to be eco-friendly and reduce carbon footprint

### GOLDEN TOUCH - WHITE

*100% Ring-Spun Cotton, Herringbone Dobby Border*

| ITEM                      | SIZE      | WEIGHT    | CASE PACK | ITEM NUMBER |
|---------------------------|-----------|-----------|-----------|-------------|
| Wash Cloths               | 12" x 12" | 1.00 lb.  | 25 dz.    | TGT12X12    |
|                           | 13" x 13" | 1.50 lb.  | 25 dz.    | TGT13X13    |
| Hand Towels               | 16" x 27" | 3.25 lb.  | 10 dz.    | TGT16X27    |
|                           | 16" x 30" | 4.50 lb.  | 10 dz.    | TGT16X30    |
| Bath Towels               | 24" x 50" | 10.50 lb. | 5 dz.     | TGT24X50    |
|                           | 25" x 52" | 12.00 lb. | 3 dz.     | TGT25X52    |
|                           | 27" x 54" | 14.00 lb. | 3 dz.     | TGT27X54-14 |
|                           | 27" x 54" | 15.00 lb. | 3 dz.     | TGT27X54-15 |
|                           | 27" x 54" | 17.00 lb. | 3 dz.     | TGT27X54-17 |
| Bath Mat (Golden Square*) | 22" x 34" | 10.00 lb. | 5 dz.     | TWGS22X34   |

*\*Golden Square Bath Mats are made of 86% Cotton/14% Polyester and feature a simple square pattern border*



## GOLDEN TOUCH ECRU



**A1 American Golden Touch-Ecru is our best-selling towel line with a distinct Herringbone Dobby border.**

- 100% ringspun cotton with a Herringbone Dobby border
- Soft and delicate feel with excellent absorbency and quick dry solution
- Crafted uniquely for the hospitality and health club markets with affordable pricing
- Includes double and lock stitched hemming
- Packed in condensed bulk format to be eco-friendly and reduce carbon footprint

## GOLDEN TOUCH - ECRU

*100% Ring-Spun Cotton, Herringbone Dobby Border*

| ITEM        | SIZE      | WEIGHT    | CASE PACK | ITEM NUMBER   |
|-------------|-----------|-----------|-----------|---------------|
| Wash Cloths | 12" x 12" | 1.00 lb.  | 25 dz.    | TGTEC12X12    |
|             | 13" x 13" | 1.50 lb.  | 25 dz.    | TGTEC13X13    |
| Hand Towels | 16" x 27" | 3.25 lb.  | 10 dz.    | TGTEC16X27    |
|             | 16" x 30" | 4.50 lb.  | 10 dz.    | TGTEC16X30    |
| Bath Towels | 24" x 50" | 10.50 lb. | 5 dz.     | TGTEC24X50    |
|             | 25" x 52" | 12.00 lb. | 3 dz.     | TGTEC25X52    |
|             | 27" x 54" | 14.00 lb. | 3 dz.     | TGTEC27X54-14 |
|             | 27" x 54" | 15.00 lb. | 3 dz.     | TGTEC27X54-15 |
|             | 27" x 54" | 17.00 lb. | 3 dz.     | TGTEC27X54-17 |
| Bath Mats   | 20" x 30" | 7.00 lb.  | 10 dz.    | TGTEC20X30    |
|             | 22" x 34" | 10.00 lb. | 5 dz.     | TGTEC22X34    |







### GOLDEN SQUARE BATH MATS



**Golden Square is our universal high-absorbency quality line of bath mats.**

- Made of 86% cotton and 14% polyester blended yarn that reduces shrinkage and provides a longer life span.
- Features a simple square border that compliments all decor styles.
- Soft, plush feel with exceptional absorbency and quick drying.
- The line was specifically crafted with universality in mind, and looks right at home in any hospitality, institutional, healthcare and health club environment.

### GOLDEN SQUARE BATH MATS

*86% cotton and 14% polyester blended yarn*

| ITEM                    | SIZE  | WEIGHT    | CASE PACK | ITEM NUMBER |
|-------------------------|-------|-----------|-----------|-------------|
| Golden Square Bath Mats | 20x30 | 7.00 lb.  | 10 dz.    | TWGS20X30   |
|                         | 22x34 | 10.00 lb. | 5 dz.     | TWGS22X34   |

*\*Golden Square Bath Mats are made of 86% Cotton/14% Polyester and feature a simple square pattern border*



## UTILITY TOWELS



**A1 American Premium Terry Blue Stripe Utility towels are a preferred cost-effective towel with a distinct cam border design.**

- Unique center blue stripe design for identification
- 100% Cotton
- Lock stitched hemming to prevent unraveling
- The line was made for the institutional and healthcare markets to make a quality impression, while still priced affordably
- Offers great absorbency, longevity and dries quickly
- Premium Terry is packed in condensed bulk format to be eco-friendly and reduce carbon footprint

## PREMIUM TERRY UTILITY TOWELS

*100% Cotton, White w/ Color Stripe*

| COLOR                         | SIZE      | WEIGHT   | CASE PACK | ITEM NUMBER |
|-------------------------------|-----------|----------|-----------|-------------|
| Center Blue Stripe Hand Towel | 16" x 27" | 2.62 lb. | 25 dz.    | TWTBS16X27  |
| Center Blue Stripe Bath Towel | 22" x 44" | 5.75 lb. | 25 dz.    | TWTBS22X44  |



**Golden Camelot Center Blue Stripe Utility Towels are designed to out-perform standard terry towels.**

- These towels are made with a 86/14% Cotton/Poly 16-singles blend that reduces shrinkage and provides a longer lifespan.
- Cam border, sides are lock stitched hemming to prevent unraveling.
- Packed in a bale-packed compressed bulk format which benefits our environment by reducing its carbon footprint.
- The line was made for the value driven, institutional and healthcare markets to make a quality impression, while still priced very affordably.

## GOLDEN CAMELOT UTILITY TOWELS

*86% Cotton 14% Polyester, White w/ Color Stripe*

| COLOR                         | SIZE      | WEIGHT   | CASE PACK | ITEM NUMBER |
|-------------------------------|-----------|----------|-----------|-------------|
| Center Blue Stripe Hand Towel | 16" x 27" | 2.62 lb. | 25 dz.    | TWGCBS16X27 |
| Center Blue Stripe bath Towel | 22" x 44" | 5.75 lb. | 25 dz.    | TWGCBS22X44 |



## UTILITY


**A1 American Bar Mops are a popular and Economical cleaning tool for all purposes.**

- 100% Cotton Yarn construction
- Very absorbent for basic cleaning
- Ideal for spillage and can withstand stains
- Guaranteed to last through repeated use and wash

**BAR MOPS**

100% Cotton Terry, White w/ Color Stripe

| COLOR        | SIZE      | WEIGHT | CASE PACK | ITEM NUMBER |
|--------------|-----------|--------|-----------|-------------|
| Blue Stripe  | 16" x 19" | 32 oz. | 50 dz.    | HSKBMBLUS30 |
| Gold Stripe  | 16" x 19" | 32 oz. | 50 dz.    | HSKBMGOLS30 |
| Green Stripe | 16" x 19" | 32 oz. | 50 dz.    | HSKBMGRNS30 |
| Solid White  | 16" x 19" | 32 oz. | 50 dz.    | HSKBMT30    |
| Solid White  | 16" x 19" | 24 oz. | 50 dz.    | HSKBM24     |


**A1 American Route Ready Bar Towels**

- Tied in 50 pcs per bundle straight out of the bale
- Enhanced yarn construction
- 100% Ringspun Cotton
- Increased softness
- Typically, laundries save at least 70¢ per dozen by freeing washroom and finishing floor operators from a whole wash cycle.
- Your customer will feel and see the difference
- Reusable with improved durability

**ROUTE READY BAR MOPS**

100% Ringspun Cotton, White w/ Color Stripe

| DESCRIPTION      | SIZE      | WEIGHT | WEIGHT | ITEM NUMBER |
|------------------|-----------|--------|--------|-------------|
| GOLD/BLUE STRIPE | 16" X 19" | 32 OZ. | 50 DZ. | HSKBMGOLBLU |





## CLEANING



**A1 American Microfiber Towels are versatile in use and very convenient to use for cleaning, drying, dusting or polishing.**

- Saves you money - machine wash and re-use over 500 times.
- Easy to use and leave no trace of lint or streaks behind on surfaces.
- They do not scratch and are safe to use on any surface.
- Lifts and traps dirt and moisture.
- Extremely absorbent, absorbs up to 7 times its weight in water
- Hypo-allergenic, safe for asthmatics and allergy sufferers
- Reduces bacteria

## MICROFIBER TOWELS

80% Polyester 20% Polyamide, Solid Color

| COLOR        | SIZE      | WEIGHT  | CASE PACK | ITEM NUMBER         |
|--------------|-----------|---------|-----------|---------------------|
| Solid Black  | 16" x 16" | 300 GSM | 25 dz.    | HSKMICROFIBERBLACK  |
| Solid Blue   | 16" x 16" | 300 GSM | 25 dz.    | HSKMICROFIBERBLUE   |
| Solid Green  | 16" x 16" | 300 GSM | 25 dz.    | HSKMICROFIBERGREEN  |
| Solid Orange | 16" x 16" | 300 GSM | 25 dz.    | HSKMICROFIBERORANGE |
| Solid Red    | 16" x 16" | 300 GSM | 25 dz.    | HSKMICROFIBERRED    |
| Solid White  | 16" x 16" | 300 GSM | 25 dz.    | HSKMICROFIBERW      |
| Solid Yellow | 16" x 16" | 300 GSM | 25 dz.    | HSKMICROFIBERYELLOW |
| Solid Navy   | 16" x 16" | 300 GSM | 25 dz.    | HSKMICROFIBERNAVY   |
| Green Stripe | 14" x 17" | 300 GSM | 25 dz.    | HSKMICRO14X17GREEN  |

## THE EFFICIENT ALTERNATIVE:

- ↔ Microfiber is 1/6 the width of human hair, which means it can hold eight times its weight in water
- ↔ It has special tiny channels designed to capture dirt, bacteria and chemicals
- ⚡ Microfiber strands are split 10 times, which creates positive electric charge; the dirt and dust particles have a negative charge, attracting dirt to the microfiber
- 🦠 When bacteria is removed after cleaning with microfiber, there can be a 99% reduction in bacteria, compared to using regular cloth.
- 🧴 Using Microfiber means using less chemicals in the average cleaning, leading to less contamination.
- 🧪 According to EPA, this can result in up to a 95% reduction to cleaning chemicals in the water supply



## TERRY TOWELS COLLECTION

### UTILITY



Burgundy

Hunter Green

Royal Blue



Red

Navy

Grey



Brown

Black



**A1 american Golden Camelot colored hand towels are constructed with high quality material for maximum efficiency and a touch of color.**

- These hand towels are woven with a 86% Ringspun Cotton/14% Polyester Blend
- Offers an Open Ended Weave
- Blended Terry which will give your facility a touch of color
- Offers 100% cotton loops to provide extra absorbency for your residents
- Nine colors available and two bleach-proof options
- 16 Singles construct
- Constructed for durability and institutional use
- Silver level

### GOLDEN CAMELOT SOLID COLOR UTILITY HAND TOWELS

86% Cotton 14% Polyester, Cam Border

| ITEM                               | SIZE      | WEIGHT   | CASE PACK | ITEM NUMBER        |
|------------------------------------|-----------|----------|-----------|--------------------|
| Solid Black                        | 16" x 27" | 3.00 lb. | 25 dz.    | BTY16X27BLACK-25DZ |
| Solid Brown                        | 16" x 27" | 3.00 lb. | 25 dz.    | BTY16X27BROWN-25DZ |
| Solid Burgundy                     | 16" x 27" | 3.00 lb. | 25 dz.    | BTY16X27BURG       |
| Solid Dark Grey                    | 16" x 27" | 3.00 lb. | 25 dz.    | BTY16X27GREYDK     |
| Solid Hunter Green                 | 16" x 27" | 3.00 lb. | 25 dz.    | BTY16X27HUNTERG    |
| Solid Navy Blue                    | 16" x 27" | 3.00 lb. | 25 dz.    | BTY16X27NAVY       |
| Solid Red                          | 16" x 27" | 3.00 lb. | 25 dz.    | BTY16X27RED        |
| Solid Royal Blue                   | 16" x 27" | 3.00 lb. | 25 dz.    | BTY16X27ROYALBLUE  |
| Solid Seafoam Green                | 16" x 27" | 3.00 lb. | 25 dz.    | BTY16X27SG         |
| Solid Black - Bleachproof          | 16" x 27" | 3.00 lb. | 10 dz.    | BTYBP16X27BLACK    |
| Solid Brown - Bleachproof          | 16" x 27" | 3.00 lb. | 10 dz.    | BTYBP16X27BROWN    |
| Black w/ White Embroidery Cosmetic | 12" x 12" | 1.00 lb. | 25 dz.    | BTY12X12BLACK      |







POOL TOWELS COLLECTION

GOLDEN JEWEL CABANA STRIPE



**A1 American Golden Jewel Pool Towels are woven with a blend of aesthetic colors to provide excellent absorbency and a lasting impression.**

- 100% Ringspun Cotton
- Woven on high quality shuttleless looms
- Utilizes double lock stitched hemming to prevent hems from unraveling
- Towel offers a soft, plush feel to the touch
- Offers excellent absorbency and quick dry
- Uniquely preferred for healthcare and health club markets to make a lasting impression
- Affordable pricing



GOLDEN JEWEL CABANA STRIPE POOL TOWELS

100% Ring-Spun Cotton, White w/ Color Stripes

| COLOR                   | SIZE      | WEIGHT    | CASE PACK | ITEM NUMBER      |
|-------------------------|-----------|-----------|-----------|------------------|
| Beige 2" Cabana Stripes | 24" x 50" | 11.00 lb. | 3 dz.     | BSR24X50ZBEIGEST |
| Blue 2" Cabana Stripes  | 24" x 50" | 11.00 lb. | 3 dz.     | BSR24X50ZBLUEST  |
| Beige 2" Cabana Stripes | 30" x 66" | 13.00 lb. | 3 dz.     | BSR30X66ZBEIGEST |
| Blue 2" Cabana Stripes  | 30" x 66" | 13.00 lb. | 3 dz.     | BSR30X66ZBLUEST  |
| Beige 2" Cabana Stripes | 35" x 70" | 17.00 lb. | 3 dz.     | BSR35X70BEIGEST  |
| Blue 2" Cabana Stripes  | 35" x 70" | 17.00 lb. | 3 dz.     | BSR35X70BLUEST   |
| Green 2" Cabana Stripes | 35" x 70" | 17.00 lb. | 3 dz.     | BSR35X70GREENST  |



SHEETS COLLECTION

SOLID



GOLDEN MILLS T-130  
MUSLIN SHEETS



PERCALE T-180  
DURACALE SHEETS



GOLDEN CLOUD  
MICROFIBER SHEETS



GOLDEN TOUCH T-200  
SHEETS  
SOLID WHITE & SOLID BONE

STRIPED



GOLDEN DECADENCE T-310  
SHEETS



GOLDEN SUITE T-250  
1/4" TONE-ON-TONE WHITE



GOLDEN SUITE T-250  
1" TONE-ON-TONE WHITE  
TONE-ON-TONE BONE

COLOR IDENTIFICATION HEM THREADS

|              |             |               |             |
|--------------|-------------|---------------|-------------|
| Twin - White | Full - Blue | Queen - Green | King - Gold |
|--------------|-------------|---------------|-------------|



MUSLIN T-130



A1 American Muslin T-130

- Our Draw T-130 Sheets are produced on the newest high-tech looms to produce sheets that are both durable and comfortable to sleep on.
- All items are single pick woven with yarns of 55% Cotton RICH/45% Polyester. 3.1 lb. weight fabric.

| DESCRIPTION | SIZE    | COLOR | ITEM NUMBER  |
|-------------|---------|-------|--------------|
| FITTED XL   | 36 X 84 | WHITE | SHIAF36X84   |
| DRAWSHEET   | 54 X 72 | WHITE | SHIDRAW54X72 |
| DRAWSHEET   | 54 X 81 | WHITE | SHIDRAW54X81 |

PERCALE T-180 DURACALE



A1 American Percale T-180

- Our Percale T-180 Sheets are produced on the newest high-tech looms to produce sheets that are both durable and comfortable to sleep on.
- All items are single pick woven with yarns of 55% Cotton RICH/45% Polyester. Competition is 30/70

| DESCRIPTION | SIZE     | COLOR | ITEM NUMBER   |
|-------------|----------|-------|---------------|
| PILLOWCASE  | 42 X 34  | WHITE | SHGD42X34     |
| FLAT        | 66 X 115 | WHITE | SHGD66X104    |
|             | 66 X 108 | WHITE | SHGD66X108    |
|             | 66 X 115 | WHITE | SHGD66X115    |
| FITTED      | 36 X 80  | WHITE | SHGDAF36X80   |
| FITTED XL   | 36 X 84  | WHITE | SHGDAF36X84   |
| DRAWSHEET   | 54 X 72  | WHITE | SHGDDRAW54X72 |
|             | 54 X 81  | WHITE | SHGDDRAW54X81 |
|             | 54 X 90  | WHITE | SHGDDRAW54X90 |





## GOLDEN CLOUD



**A1 American Golden Cloud Microfiber sheets are engineered for a soft, crisp and comfortable feel. The sheets features a smooth and breathable finish. Your guests will feel the difference, CLEAN and FRESH.**

- Our Golden Cloud Microfiber Sheets - produced on the newest high-tech looms to produce sheets that are both durable and save time in processing and drying costs
- Woven from 100% Microfiber Polyester yarns that outlast blended sheets by twice as long
- Golden Cloud - “Ever So Soft” to the touch, resistant to wrinkling, breathable, and heavier weight than the competition

| DESCRIPTION | SIZE         | COLOR | ITEM NUMBER    |
|-------------|--------------|-------|----------------|
| PILLOWCASE  | 42 X 34      | WHITE | SHGC42X34      |
| FLAT        | 66 X 104     | WHITE | SHGC66X104     |
| FITTED      | 36 X 80 X 12 | WHITE | SHGCAF36X80X12 |
| FITTED      | 42 X 80 X 12 | WHITE | SHGCAF42X80    |



## GOLDEN TOUCH T-200 SOLID WHITE



**A1 American Golden Touch T-200 Percale Sheets are manufactured uniquely to provide your guests with a comfortable and durable experience.**

- These sheets are woven with single pick yarns of 60/40% Cotton/Polyester blend
- Strong, durable yet affordable sheets that offer your guests a comfortable experience
- 12" or 15" deep pocket fit
- Available in Solid White or Bone
- Versatile and dependable sheets perfectly suitable for many industries, including:
  - Hospitality      • Spa and fitness
  - Healthcare      • Institutional
- Easy fit, center labeled
- Color coded for sizing
- No iron

*Solid White, 60/40, 12" or 15" Pockets, Hemsizes 2" top and bottom*

| ITEM          | STOCK     | SIZE            | ITEM NUMBER    |
|---------------|-----------|-----------------|----------------|
| Pillowcases   | STANDARD  | 42" x 36"       | SHGT42X36      |
| 6 dz. / cs    | QUEEN     | 42" x 40"       | SHGT42X40      |
|               | KING      | 42" x 46"       | SHGT42X46      |
| Flat Sheets   | TWIN      | 66" x 108"      | SHGT66X108     |
| 2 dz. / cs.   | TWIN XL   | 66" x 115"      | SHGT66X115     |
|               | FULL      | 81" x 108"      | SHGT81X108     |
|               | FULL XL   | 84" x 115"      | SHGT84X115     |
|               | QUEEN     | 92" x 115"      | SHGT92X115     |
|               | QUEEN XL  | 96" x 120"      | SHGT96X120     |
|               | KING      | 110" x 115"     | SHGTA110X115   |
|               | KING XL   | 116" x 120"     | SHGTA116X120   |
| Fitted Sheets | TWIN      | 39" x 80" x 12" | SHGTAF39X80    |
| 2 dz. / cs.   | FULL      | 54" x 80" x 15" | SHGTAF54X80X14 |
|               | QUEEN     | 60" x 80" x 15" | SHGTAF60X80X15 |
|               | CAL KING  | 72" x 84" x 15" | SHGTAF72X84X15 |
|               | DUAL KING | 78" x 80" x 15" | SHGTAF78X80X15 |



## GOLDEN TOUCH T-200 SOLID BONE



**A1 American Golden Touch T-200 Percale Sheets are manufactured uniquely to provide your guests with a comfortable and durable experience.**

- These sheets are woven with single pick yarns of 60/40% Cotton/Polyester blend
- Strong, durable yet affordable sheets that offer your guests a comfortable experience
- 12" or 15" deep pocket fit
- Available in Solid White or Bone
- Versatile and dependable sheets perfectly suitable for many industries, including:
  - Hospitality      • Spa and fitness
  - Healthcare      • Institutional
- Easy fit, center labeled
- Color coded for sizing
- No iron

*Solid Bone, 60/40, 12" or 15" Pockets, Hemsized 2" top and bottom*

| ITEM                 | STOCK     | SIZE            | ITEM NUMBER    |
|----------------------|-----------|-----------------|----------------|
| <b>Pillowcases</b>   | STANDARD  | 42" x 36"       | SHGTB42X36     |
| 6 dz./cs             | QUEEN     | 42" x 40"       | SHGTB42X40     |
| <b>Flat Sheets</b>   | KING      | 42" x 46"       | SHGTB42X46     |
| 2 dz./cs             | TWIN XL   | 66" x 115"      | SHGTB66X115    |
|                      | FULL XL   | 81" x 115"      | SHGTB81X115    |
|                      | QUEEN     | 90" x 115"      | SHGTB90X115    |
|                      | KING      | 108" x 115"     | SHGTB108X115   |
| <b>Fitted Sheets</b> | TWIN      | 39" x 80" x 12" | SHGTBF39X80    |
| 2 dz./cs             | FULL      | 54" x 80" x 15" | SHGTBF54X80    |
|                      | QUEEN     | 60" x 80" x 15" | SHGTBF60X8014  |
|                      | CAL KING  | 72" x 84" x 15" | SHGTBF72X84X14 |
|                      | DUAL KING | 78" x 80" x 15" | SHGTBF78X80X15 |



## GOLDEN DECADENCE T-310



**A1 American T-310 Golden Decadence sheets are designed to produce an all encompassing pinnacle of quality, opulence and performance and sure to add a lasting impression to your bedding collection.**

- Ultimate in luxury, quality, and performance
- Woven with a 60/40% Ring spun combed cotton/polyester blend
- Hemsized 2" top and bottom
- Blended fabric for an aesthetic look and improved texture/feel
- Basket weave pattern increases durability and elasticity
- Sheets are manufactured to be wrinkle-resistant
- 14" or 15" deep pocket fit and elastic all the way around
- Quicker laundry drying time and decreased shrinkage
- Accommodates mattress depths up to 15"
- Available in: Solid White
- Easy fit, center labeled
- Color coded for sizing
- No iron

*60/40, 14" or 15" Pockets, Hemsized 2" top and bottom*

| ITEM                 | STOCK     | SIZE            | ITEM NUMBER     |
|----------------------|-----------|-----------------|-----------------|
| <b>Pillowcases</b>   | STANDARD  | 42" x 36"       | SHGDE42X36      |
| <b>6 dz. / cs</b>    | QUEEN     | 42" x 40"       | SHGDE42X40      |
|                      | KING      | 42" x 46"       | SHGDE42X46      |
| <b>Flat Sheets</b>   | TWIN      | 72" x 120"      | SHGDE72X120     |
| <b>2 dz. / cs.</b>   | FULL      | 87" x 120"      | SHGDE87X120     |
|                      | QUEEN     | 96" x 120"      | SHGDE96X120     |
|                      | KING XL   | 116" x 120"     | SHGDEA116X120   |
| <b>Fitted Sheets</b> | TWIN XL   | 39" x 80" x 14" | SHGDEAF39X80X14 |
| <b>2 dz. / cs.</b>   | FULL XL   | 54" x 80" x 14" | SHGDEAF54X80X14 |
|                      | QUEEN     | 61" x 81" x 15" | SHGDEAF61X81X15 |
|                      | CAL KING  | 73" x 85" x 15" | SHGDEAF73X85X15 |
|                      | DUAL KING | 79" x 81" x 15" | SHGDEAF79X81X15 |



## GOLDEN SUITE T-250 1/4" TONE-ON-TONE WHITE



**A1 American Golden Suite T-250 Percale Sheets are manufactured to maximize on durability and support while minimizing on costs.**

- These quality sheets are produced with single pick woven yarns of 60/40% Cotton/Polyester blend
- Manufactured specifically with the hospitality industry in mind to maximize affordability and durability
- Offer your guests a cotton-rich, elegant yet durable feel
- 12" or 15" Deep Pocket fit - Elastic all the way around
- Easy fit, center labeled
- Color coded for sizing
- No iron

*1/4" White/White Pinstripe, 60/40, 12" or 15" Pockets, Hemsized 2" top and bottom*

| ITEM                 | STOCK     | SIZE            | ITEM NUMBER      |
|----------------------|-----------|-----------------|------------------|
| <b>Pillowcases</b>   | STANDARD  | 42" x 36"       | SHGSAP42X36      |
| <b>6 dz. / cs</b>    | QUEEN     | 42" x 40"       | SHGSAP42X40      |
|                      | KING      | 42" x 46"       | SHGSAP42X46      |
| <b>Flat Sheets</b>   | TWIN      | 66" x 115"      | SHGSAP66X115     |
| <b>2 dz. / cs.</b>   | FULL      | 84" x 115"      | SHGSAP84X115     |
|                      | QUEEN     | 92" x 115"      | SHGSAP92X115     |
|                      | QUEEN XL  | 96" x 120"      | SHGSAP96X120     |
|                      | KING XL   | 116" x 120"     | SHGSAPA116X120   |
| <b>Fitted Sheets</b> | TWIN      | 39" x 80" x 12" | SHGSAPAF39X80    |
| <b>2 dz. / cs.</b>   | FULL      | 54" x 80" x 15" | SHGSAPAF54X80X14 |
|                      | QUEEN     | 60" x 80" x 15" | SHGSAPAF60X80X15 |
|                      | CAL KING  | 72" x 84" x 15" | SHGSAPAF72X84X15 |
|                      | DUAL KING | 78" x 80" x 15" | SHGSAPAF78X80X15 |





## GOLDEN SUITE T-250 1" TONE-ON-TONE WHITE



**A1 American Golden Suite T-250 Percale Sheets are manufactured to maximize on durability and support while minimizing on costs.**

- These quality sheets are produced with single pick woven yarns of 60/40% Cotton/Polyester blend
- Manufactured specifically with the hospitality industry in mind to maximize affordability and durability
- Offer your guests a cotton-rich, elegant yet durable feel
- 12" or 15" deep pocket fit & elastic all the way around
- Easy fit, center labeled
- Color coded for sizing
- No iron

*1" White/White Stripe, 60/40, 12" or 15" Pockets, Hemsize 2" top and bottom*

| ITEM                 | STOCK     | SIZE            | ITEM NUMBER    |
|----------------------|-----------|-----------------|----------------|
| <b>Pillowcases</b>   | STANDARD  | 42" x 36"       | SHGS42X36      |
| <b>6 dz. / cs</b>    | QUEEN     | 42" x 40"       | SHGS42X40      |
|                      | KING      | 42" x 46"       | SHGS42X46      |
| <b>Flat Sheets</b>   | TWIN      | 66" x 115"      | SHGS66X115     |
| <b>2 dz. / cs.</b>   | FULL      | 84" x 115"      | SHGS84X115     |
|                      | QUEEN     | 92" x 115"      | SHGS92X115     |
|                      | QUEEN XL  | 96" x 120"      | SHGS96X120     |
|                      | KING      | 110" x 115"     | SHGSA110X115   |
|                      | KING XL   | 116" x 120"     | SHGSA116X120   |
| <b>Fitted Sheets</b> | TWIN      | 39" x 80" x 12" | SHGSAF39X80    |
| <b>2 dz. / cs.</b>   | FULL      | 54" x 80" x 15" | SHGSAF54X80X14 |
|                      | QUEEN     | 60" x 80" x 15" | SHGSAF60X80X15 |
|                      | CAL KING  | 72" x 84" x 15" | SHGSAF72X84X15 |
|                      | DUAL KING | 78" x 80" x 15" | SHGSAF78X80X15 |



## GOLDEN SUITE T-250 1" TONE-ON-TONE BONE



**A1 American Golden Suite T-250 Percale Sheets are manufactured to maximize on durability and support while minimizing on costs.**

- These quality sheets are produced with single pick woven yarns of 60/40% Cotton/Polyester blend
- Manufactured specifically with the hospitality industry in mind to maximize affordability and durability
- Offer your guests a cotton-rich, elegant yet durable feel
- 12" or 15" deep pocket fit and elastic all the way around
- Easy fit, center labeled
- Color coded for sizing
- No iron

*1" Bone/Bone Stripe, 60/40, 12" or 15" Pockets, Hemsized 2" top and bottom*

| ITEM                 | STOCK     | SIZE            | ITEM NUMBER     |
|----------------------|-----------|-----------------|-----------------|
| <b>Pillowcases</b>   | STANDARD  | 42" x 36"       | SHGSB42X36      |
| <b>6 dz. / cs</b>    | QUEEN     | 42" x 40"       | SHGSB42X40      |
|                      | KING      | 42" x 46"       | SHGSB42X46      |
| <b>Flat Sheets</b>   | TWIN      | 66" x 115"      | SHGSB66X115     |
| <b>2 dz. / cs.</b>   | FULL      | 84" x 115"      | SHGSB84X115     |
|                      | QUEEN     | 96" x 115"      | SHGSB96X115     |
|                      | KING      | 110" x 115"     | SHGSBA110X115   |
| <b>Fitted Sheets</b> | TWIN      | 39" x 80" x 12" | SHGSBAF39X80    |
| <b>2 dz. / cs.</b>   | FULL      | 54" x 80" x 15" | SHGSBAF54X80X12 |
|                      | QUEEN     | 60" x 80" x 15" | SHGSBAF60X80X15 |
|                      | CAL KING  | 72" x 84" x 15" | SHGSBAF72X84X15 |
|                      | DUAL KING | 78" x 80" x 15" | SHGSBAF78X80X15 |



A large, textured blue surface, possibly a sheet of fabric or paper, with a slightly wavy top edge, occupies the left and center portions of the page.

## **HEALTHCARE SHEETS**



---

## HEALTHCARE SHEETS COLLECTION



**MISTY GREEN GURNEY  
STRETCHER SHEET**



**BLUE GURNEY  
STRETCHER SHEET**



**KNITTED FITTED  
CONTOUR SHEET**



**SURGICAL  
LINEN**



**JERSEY KNITTED  
FITTED BED LINENS**



## BLUE GURNEY STRETCHER SHEET



### A1 American Blue Gurney Stretcher Sheet

- Knit construction keeps sheet in place without elastic and reduces bunching and wrinkling resulting in increased patient comfort
- Soft, ultra knit 100% poly fabric surface is more comfortable against the patient's skin than standard sheets
- One size fits all design
- Reduce sheet usage per visit (Gurney)
- Stain release properties
- Ideal weight size and cost

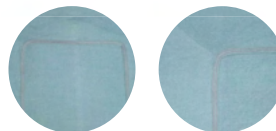
| DESCRIPTION                 | WEIGHT | SIZE           | BINDING           | COLOR | ITEM NUMBER |
|-----------------------------|--------|----------------|-------------------|-------|-------------|
| BLUE GURNEY STRETCHER SHEET | 16 oz. | 25" x 77" x 5" | WHITE RIB BINDING | BLUE  | SH25X77X5B  |

## MISTY GREEN GURNEY STRETCHER SHEET



### A1 American Misty Green Gurney Stretcher Sheet

- Knit construction keeps sheet in place without elastic and reduces bunching and wrinkling resulting in increased patient comfort
- Soft, 55% cotton/45% polyester blend fabric surface is more comfortable against the patient's skin than standard sheets
- One size fits all design
- Reduce sheet usage per visit (Gurney)
- Stain release properties
- Ideal weight size and cost



| DESCRIPTION                 | WEIGHT | SIZE            | BINDING         | CASE PACK | COLOR       | ITEM NUMBER  |
|-----------------------------|--------|-----------------|-----------------|-----------|-------------|--------------|
| MISTY GREEN STRETCHER SHEET | 21 oz. | 27" x 78" x 10" | RED RIB BINDING | 5 DZ      | MISTY GREEN | SH27X78X10MG |



KNITTED FITTED CONTOUR SHEET



A1 American Knitted Fitted Contour Sheet

- Knit construction keeps sheet in place without elastic and reduces bunching and wrinkling resulting in increased patient comfort
- Soft, ultra knit 100% poly fabric surface is more comfortable against the patient’s skin than standard sheets
- 100% polyester keeps the sheet whiter longer, resists stains and feels like cotton
- Unique stretch design fits the mattress enabling caregivers to make the bed with minimal lifting
- Better fit reduces labor since there is less need to straighten or change beds
- Stain release properties help keep sheets looking newer, longer which reduces costs

| DESCRIPTION                  | WEIGHT | SIZE           | BINDING       | COLOR | ITEM NUMBER |
|------------------------------|--------|----------------|---------------|-------|-------------|
| KNITTED FITTED CONTOUR SHEET | 27 oz. | 32" x 86" x 8" | GREEN BINDING | WHITE | SHKNFPOLY   |







JERSEY KNITTED FITTED BED LINENS



A1 American Jersey Knitted Bed Linens

- Standard white healthcare fitted sheet provides more comfort to your residents
- Woven of a Polyester/Cotton Blend which gives it the stretchability needed and the softness of a fine T-Shirt
- Three weights: Standard 19 oz., Medium 21 oz. and Premium 24 oz.

| DESCRIPTION    | SIZE         | WEIGHT         | ITEM NUMBER   |
|----------------|--------------|----------------|---------------|
| KNITTED FITTED | 36 X 84 X 16 | STANDARD 19OZ. | SHKNF36X84    |
| KNITTED FITTED | 36 X 84 X 14 | PREMIUM 24OZ.  | SHKNF36X84-24 |
| KNITTED FITTED | 36 X 88 X 15 | PREMIUM 24OZ.  | SHKNF36X88X15 |



SURGICAL LINEN



A1 American Surgical Linen

PILLOWCASES/FLAT SHEETS

- OR Misty Green T-180 tightly woven
- Durable 55/45 Cotton blend
- Minimal linting

TOWEL

- OR Misty Green 100% Cotton
- Absorbant and durable
- Hemmed on all four sides
- Tight huckweave for low lint performance

| DESCRIPTION                     | MATERIAL             | SIZE       | CASE PACK | ITEM NUMBER         |
|---------------------------------|----------------------|------------|-----------|---------------------|
| OR TOWELS MISTY GREEN ABSORBENT | 55%/45% COTTON BLEND | 18" x 30"  | 25 DZ     | TOR18X30-MISTY      |
| OR TOWELS JADE GREEN ABSORBENT  | 100% COTTON          | 18" x 32"  | 25 DZ     | TOR18X32            |
| T180 PILLOWCASE MISTY GREEN     | 55%/45% COTTON BLEND | 42" x 34"  | 2 DZ      | ZATL42X34T180-MISTY |
| T180 FLAT SHEET MISTY GREEN     | 100% COTTON BLEND    | 70" x 108" | 5 DZ      | SH70X108-MISTY      |



## BLANKETS COLLECTION



**THERMAL SPREAD  
BLANKETS**



**WHITE THERMAL  
BLANKETS**



**TERRY SPREAD  
BLANKET**



**BATH  
BLANKETS**



**BABY RECEIVING  
BLANKET**



## THERMAL SPREAD

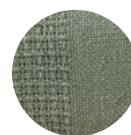


**A1 American Thermal Spread Blankets are ideal for guests looking for that woven look and feel.**

- Our in stock thermal spread blanket selections
- Tightly woven for durability with a checked square pattern design
- Heavy weight 3.5 lbs per spread blanket
- Oversized 74 x 108 - 100% cotton



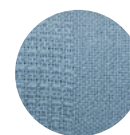
Raspberry



Green



Champagne



Blue



White

## THERMAL SPREAD BLANKETS

*3.5 lb. Solid Color, Checked Pattern, 100% Spun Cotton*

| DESCRIPTION    | SIZE       | COLOR        | ITEM NUMBER          |
|----------------|------------|--------------|----------------------|
| SPREAD BLANKET | 74" X 108" | Raspberry    | BLK74x108THERM-RASP  |
| SPREAD BLANKET | 74" X 108" | Celery Green | BLK74x108THERM-GRN   |
| SPREAD BLANKET | 74" X 108" | Champagne    | BLK74x108THERM-CHAMP |
| SPREAD BLANKET | 74" X 108" | Blue         | BLK74x108THERM-BLUE  |
| SPREAD BLANKET | 74" X 108" | White        | BLK74X108THERM-3.75  |



## THERMAL BLANKET



**A1 American Thermal Blankets offer guests a pure cotton-rich experience with a durable finish - White**

- Our selection of standard thermal leno no snag weave blankets
- Twin Size 66 x 90 - 100% Cotton

## THERMAL BLANKET

*100% Cotton*

| DESCRIPTION    | SIZE      | COLOR | STYLE                   | ITEM NUMBER       |
|----------------|-----------|-------|-------------------------|-------------------|
| SPREAD BLANKET | 66" X 90" | White | No snag - Mini Block    | BLK66X90THERM-2.5 |
| SPREAD BLANKET | 66" X 90" | White | No snag - Block Pattern | BLK66X90THERM-3   |





## TERRY SPREAD BLANKET



### A1 American Terry Spread Blanket

- Patients will feel warm and comfortable with ideal coverage
- They will notice an attractive design and border with a clean look
- Soft 100% cotton construction
- Provide item integrity with minimal shrinkage
- Greater lint reduction with tight woven weave
- High grade commercial durability for high life cycle

### TERRY SPREAD BLANKET

100% Cotton

| DESCRIPTION          | SIZE      | COLOR | ITEM NUMBER    |
|----------------------|-----------|-------|----------------|
| TERRY SPREAD BLANKET | 74" X 96" | White | BLK74X96-3.5WH |





## BATH BLANKET



### A1 American Bath Blankets

- Weight retention
- 86% cotton/14% polyester
- Engineered for minimal shrinkage providing full patient coverage and warmth
- Significant lint reduction
- Warm and comfortable
- Perfectly designed for full coverage
- Soft and breathable
- Commercial grade durability

| DESCRIPTION                       | SIZE  | WEIGHT   | CASE PACK  | ITEM NUMBER   |
|-----------------------------------|-------|----------|------------|---------------|
| UNBLEACHED BATH BLANKET w/GRN HEM | 70X90 | 1.75 lb. | 48 pc/bale | BLK70X90-1.75 |
| UNBLEACHED BATH BLANKET           | 70X90 | 2 lb.    | 50 pc/bale | BLK70X90-2    |
| BLEACHED BATH BLANKET             | 72X90 | 2 lb.    | 50 pc/bale | BLKBB72x90    |



## BABY RECEIVING BLANKET



### A1 American Baby Receiving Blankets

- Soft warm and comfortable
- 100% Cotton Best in Class
- Ideal weight colorfast 5 lb. per dozen
- Premium quality for your service image
- Classic white with pink and blue stripe design
- Hemmed sizes to enhance service life
- 36x36 size for process (folding) efficiency
- Provide the difference

| DESCRIPTION            | MATERIAL            | SIZE      | COLOR                            | ITEM NUMBER |
|------------------------|---------------------|-----------|----------------------------------|-------------|
| BABY RECEIVING BLANKET | 100% COTTON FLANNEL | 36" x 36" | WHITE WITH PINK AND BLUE STRIPES | BLK36X36    |



### A1 American Baby Receiving Blankets

- 100% cotton construction provides warmth and comfort to the new arrival
- Cotton-rich fabric for ultimate softness
- Classic pink and blue stripe design
- Colorfast and machine washable for easy cleaning

| DESCRIPTION            | SIZE      | COLOR                            | CASE PACK | ITEM NUMBER      |
|------------------------|-----------|----------------------------------|-----------|------------------|
| BABY RECEIVING BLANKET | 30" x 40" | WHITE WITH PINK AND BLUE STRIPES | 12DZ/CS   | BLK30X40S-WHT/PB |





## INFANT DIAPER

### INFANT DIAPER



#### A1 American Infant diaper

- Soft and comfortable
- 6-ply super absorbent center panel
- 100% Cotton 2-ply twill construction
- Multi-user applications environmentally friendly
- Premium quality for your service image

### INFANT DIAPER

| ITEM          | SIZE      | CASE PACK | ITEM NUMBER    |
|---------------|-----------|-----------|----------------|
| INFANT DIAPER | 14" x 21" | 40 Case   | UPD14X20DIAPER |



**The A1 American Baby Diaper is made from 100% cotton in a classic white hue. This cloth serves as a practical and gentle solution for both baby care and polishing needs. Experience the natural absorbency and durability of 100% cotton, making it an ideal choice for multiple purposes.**

- 100% Cotton 1-ply
- Birdseye weave
- Soft and comfortable
- Flat and ideal for burping

### BABY DIAPER

| ITEM        | SIZE      | CASE PACK  | ITEM NUMBER       |
|-------------|-----------|------------|-------------------|
| BABY DIAPER | 27" x 27" | 50 DZ/Case | UPD27X27-BIRDSEYE |





A close-up photograph of a blue underpad. The pad features a white zigzag stitching pattern along its edges and a series of white wavy lines across its surface. A solid yellow square is positioned on the right side of the image, containing the text 'UNDERPADS' in bold, black, uppercase letters.

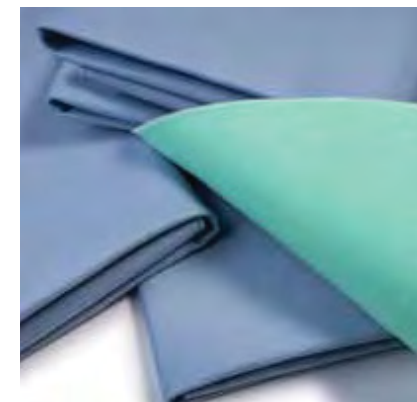
## **UNDERPADS**



## The X Pad - “The Extreme Dry Underpads”

- Our X Pad - The eXtreme Dry Underpad, starts with our uniquely designed green brushed polyester face.
- Super absorbant soaker wicks moisture away from your resident.
- Laminated blue polyurethane barrier designed to prevent shrinkage
- The X Pad is super light weight, super absorbant, and will help reduce your laundry processing time.
- The X Pad may last almost twice as long than all other U/pads .
- Rounded Corners
- Platinum Level - Generous Size: 34 x 36

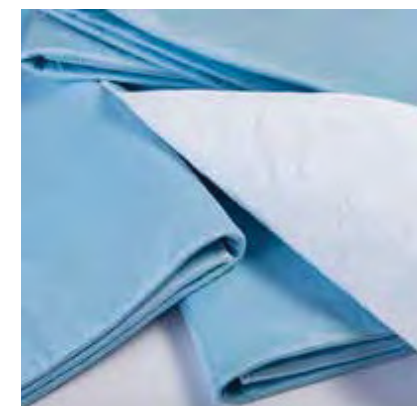
| DESCRIPTION                               | SIZE      | ITEM NUMBER     |
|-------------------------------------------|-----------|-----------------|
| BLUE BARRIER WITH GREEN BRUSHED TOP LAYER | 34" X 36" | UPXPE34X36-BLUE |



## True Blue Twill Underpads

- Our True Blue Twill Underpad, starts with a heavier weight 55/45 cotton-poly face fabric.
- Quilted to our heavy weight polyester-rayon soaker.
- Both layers are sewn to our blue knitted vinyl barrier.
- Rounded corners
- Silver Level - Generous Size: 34 x 36 - Plus Size: 36 x 42

| DESCRIPTION                | SIZE      | ITEM NUMBER |
|----------------------------|-----------|-------------|
| TRUE BLUE TWILL U/PAD      | 34" X 36" | UPTBTW34X36 |
| TRUE BLUE TWILL PLUS U/PAD | 36" X 42" | UPTBTW36X42 |



## Supreme Green Supersoft Poly Underpads

- Our Supreme Green Twill Underpad, starts with our Supersoft Brushed polyester face fabric.
- Quilted to our extra heavy weight 12 oz. absorbant polyester-rayon soaker.
- Both layers are sewn to our green knitted vinyl barrier.
- Rounded corners
- Gold Level - Generous Size: 34 x 36

| DESCRIPTION             | SIZE      | ITEM NUMBER |
|-------------------------|-----------|-------------|
| SUPREME GREEN SUPERSOFT | 34" X 36" | UPSGSP34X36 |







## OTHER ESSENTIALS





### PATIENT GOWNS AND PRECAUTIONARY ISOLATION GOWNS



#### A1 American Standard Patient Gown with Center Tie Closure

- Our Standard Economical Patient Gown with Center Tie Back Closures
- Fabric is woven with a 50% cotton/50% polyester blend
- Note: Product does not meet California Fire Marshall Title 19

| DESCRIPTION  | CLOSURE    | ITEM NUMBER    |
|--------------|------------|----------------|
| PATIENT GOWN | CENTER TIE | HGPATIENTG-STD |



#### A1 American Premium Patient Gown with Overlap Tie Closure

- Our Premium Patient Gown was designed to keep your resident covered with two Overlap Back Closures
- Fabric is woven with our heavier 50% cotton/50% polyester blend to meet California Fire Marshall Title 19

| DESCRIPTION  | CLOSURE          | ITEM NUMBER   |
|--------------|------------------|---------------|
| PATIENT GOWN | OVERLAP SIDE TIE | HGPATIENTG-PR |



#### A1 American Precautionary Gown Yellow Protective Wear Large

- Our Fluid Resistant Gown designed to protect your employees while sorting soiled linens
- Fabric is made of a fluid resistant barrier in a bright yellow color.
- Long sleeve with two back ties at the neck and waist.
- Color yellow
- Size large

| DESCRIPTION        | CLOSURE          | ITEM NUMBER    |
|--------------------|------------------|----------------|
| PRECAUTIONARY GOWN | OVERLAP SIDE TIE | HGISOLGOWN-YEL |







STANDARD PILLOW



**ComfiSoft White Pillows** are uniquely designed to offer guests a comforting and peaceful experience.

- Designed with a soft & breathable cover
- Anti-microbial
- 20 OZ. polyester fill
- Fire-resistant
- Fluid-resistant
- Wipe clean

| DESCRIPTION                | SIZE      | CASE PACK | COLOR  | ITEM NUMBER  |
|----------------------------|-----------|-----------|--------|--------------|
| COMFISOFT WHITE PILLOW STD | 21" X 27" | 12 EA.    | 20 OZ. | PILCOMFISOFT |





# ROBES COLLECTION

## ROBES



### A1 American Classic Honeycomb Waffle Weave Robe

- 60% Combed Cotton 40% Polyester
- Light in weight. Easy to wash
- Convenient standard one size fits all
- Large standard size
- 2XL, 3XL and 4XL in stock
- Robes feature a sew-in belt
- Soft, comfortable and textured
- High quality construction
- Absorbent and attractive
- Improve the patient experience
- Improve financial outcomes



### CLASSIC HONEYCOMB WAFFLE WEAVE ROBE

| ITEM                      | STYLE  | SIZE     | COLOR | CASE    | ITEM NUMBER       |
|---------------------------|--------|----------|-------|---------|-------------------|
| HONEYCOMB WAFFLE BATHROBE | Kimono | Standard | White | 12 Each | BSRROBEHNYWEAVSTD |
| HONEYCOMB WAFFLE BATHROBE | Kimono | 2 XL     | White | 12 Each | BSRROBEHNYWVE 2XL |
| HONEYCOMB WAFFLE BATHROBE | Kimono | 3 XL     | White | 12 Each | BSRROBEHNYWVE 3XL |
| HONEYCOMB WAFFLE BATHROBE | Kimono | 4 XL     | White | 12 Each | BSRROBEHNYWVE 4XL |







# ROBES COLLECTION

## ROBES



**A1 American’s robes are an ideal unisex option, tailored to cater to all guest preferences.**

- Plush and soft feel
- One size fits all
- Features self-tie belt with pockets

## ROBES

| ITEM                      | STYLE | CASE PACK | ITEM NUMBER     |
|---------------------------|-------|-----------|-----------------|
| WAFFLE WEAVE W/TERRY LINE | R110  | 12 each   | BSRROBEHNYCOMB  |
| ROBE IMPERIAL TERRY       | R108  | 12 each   | BSRROBEIMPERIAL |
| ROBE VELOUR KIMONO        | R148  | 12 each   | BSRROBEVEL      |
| ROBE VELOUR SHAWL COLLAR  | R145  | 12 each   | BSRROBEVELSC    |



WAFFLE WEAVE  
W/TERRY LINE



ROBE VELOUR  
KIMONO



ROBE VELOUR  
SHAWL COLLAR



ROBE IMPERIAL  
TERRY



CLASSIC TERRY CLOTHING PROTECTORS



- 100% Cotton Medium Weight Terry sewn with a polyester/cotton binding.
- Designed to protect your residents clothing.
- Several sizes, colors, and closures to choose from.

| DESCRIPTION        | COLOR | SIZE      | CLOSURE | ITEM NUMBER             |
|--------------------|-------|-----------|---------|-------------------------|
| CLOTHING PROTECTOR | WHITE | 18" X 30" | VELCRO  | HSKBIB18X30/VELCRO-WH   |
|                    | BLUE  | 18" X 30" | VELCRO  | HSKBIB18X30/VELCRO-BLUE |

CLASSIC TERRY CLOTHING PROTECTORS



- 100% Cotton Heavy Weight Terry sewn with a polyester/cotton binding.
- Designed to protect your residents clothing and absorbs spills.
- Several sizes, colors, and closures to choose from.

| DESCRIPTION        | COLOR         | SIZE      | CLOSURE  | ITEM NUMBER             |
|--------------------|---------------|-----------|----------|-------------------------|
| CLOTHING PROTECTOR | SIERRA STRIPE | 18" X 34" | VELCRO   | HSKBIB18X34/VELCRO-SST  |
| CLOTHING PROTECTOR | SIERRA STRIPE | 18" X 34" | SELF TIE | HSKBIB18X34/SELFTIE-SST |
| CLOTHING PROTECTOR | WHITE         | 20" X 36" | VELCRO   | HSKBIB20X36/VELCRO-WH   |
| CLOTHING PROTECTOR | WHITE         | 20" X 36" | SELF TIE | HSKBIB20X36/SELFTIE-WH  |





## MICROFIBER MOP HEADS



| DESCRIPTION                  | COLOR | SIZE | CASE PACK | ITEM NUMBER |
|------------------------------|-------|------|-----------|-------------|
| MICROFIBER 19" TWISTED CLOTH | BLUE  | 19"  | 48/EA/BOX | HSKMOPBLUE  |

## APRONS



| DESCRIPTION                   | SIZE  | COLOR | CASE PACK | ITEM NUMBER        |
|-------------------------------|-------|-------|-----------|--------------------|
| SPUN POLY APRON SINGLE POCKET | 29x34 | White | 10/DZ     | ZITCAPRON-1PKT     |
| SPUN POLY APRON SINGLE POCKET | 29x34 | Black | 10/DZ     | ZITCAPRON-1PKT-BLK |
| SPUN POLY APRON 3 POCKET      | 29x34 | White | 10/DZ     | ZITCAPRON-3PKT     |
| SPUN POLY APRON 3 POCKET      | 29x34 | Black | 10/DZ     | ZITCAPRON-3PKT-BLK |
| SPUN POLY APRON NO POCKET     | 29x34 | White | 10/DZ     | ZITCAPRON-WHT      |
| SPUN POLY APRON NO POCKET     | 29x34 | Black | 10/DZ     | ZITCAPRON-BLK      |

## DISH TOWELS



| DESCRIPTION                | SIZE  | COLOR        | ITEM NUMBER            |
|----------------------------|-------|--------------|------------------------|
| KITCHEN TOWEL GREEN STRIPE | 15x26 | Green Stripe | ZITC15X26-GREEN STRIPE |
| KITCHEN TOWEL RED STRIPE   | 15x26 | Red Stripe   | ZITC15X26-RED STRIPE   |

## NAPKINS



| DESCRIPTION  | SIZE  | COLOR | ITEM NUMBER     |
|--------------|-------|-------|-----------------|
| WHITE NAPKIN | 20x20 | White | ZITC20X20-WHITE |
| BLACK NAPKIN | 20x20 | Black | ZITC20X20-BLK   |

*\*Other colors available upon request*





## LAUNDRY BAGS

### LARGE HEAVY DUTY LAUNDRY BAGS



#### Upgrade Your Laundry Operations with Our Heavy-Duty Commercial Laundry Bag

- Made out of the highest quality nylon, extremely durable, and highly resistant to rips and tears.
- 30x40 size allows for easy transport within the laundry with locking drawstring closure and machine washable.
- Available in a variety of colors and hooded and non-hooded

### LAUNDRY BAGS

| ITEM               | SIZE                   | ITEM NUMBER  |
|--------------------|------------------------|--------------|
| GREEN LAUNDRY BAG  | 30 X 40 BARRIER HOODED | RCLB3040-GR  |
| NAVY LAUNDRY BAG   | 30 X 40 BARRIER HOODED | HSKVALB3040N |
| YELLOW LAUNDRY BAG | 30 X 40 BARRIER HOODED | HSKVALB3040Y |



A1 American is a leading and trusted full-service distributor of quality linens to the commercial laundry industry. With a nationwide distribution network, diversified product selection and latest technology innovations, we help you source the exact sizes, fabrics, weights, and aesthetics for your business operations.

## **QUALITY**

High Performance and Affordable Products

Global Supply Chain to ensure product quality and integrity

500+ linen SKUs

## **SERVICE**

Solution Based Selling

Personalized Customer Service

Online Ordering Capabilities

## **VALUE**

Nationwide Distribution for 1-2 day lead times

Strong Financial Backing

Well Stocked Inventory Management

**SUPPLY SOLUTIONS MADE SIMPLE™**





# **A1 AMERICAN COMMERCIAL LAUNDRY SUPPLY SOLUTIONS MADE SIMPLE<sup>SM</sup>**



**A1 AMERICAN**  
QUALITY SERVICE VALUE  
— SINCE 1911 —

**833-205-2200 | [sales@a1american.com](mailto:sales@a1american.com) | [www.a1american.com](http://www.a1american.com)**