



**A1 AMERICAN**  
QUALITY SERVICE VALUE  
— SINCE 1911 —

**SUPPLY SOLUTIONS MADE SIMPLE™**



**VACATION RENTAL CATALOG**

**A1 American is a best-in-class hospitality distribution company providing a full line of PPE, bed linen, OS&E and FF&E products.**

---

## TABLE OF CONTENTS

<i>p.03</i>	<b>About A1 American</b>
<i>p.04</i>	<b>A1 American is Eco-Friendly</b>
<i>p.06</i>	<b>Sheets</b>
<i>p.17</i>	<b>Terry Towels</b>
<i>p.36</i>	<b>Pool Towels</b>
<i>p.46</i>	<b>Top of Bed</b>
<i>p.53</i>	<b>Blankets</b>
<i>p.62</i>	<b>Pillows</b>
<i>p.69</i>	<b>Pillow &amp; Mattress Protection</b>
<i>p.76</i>	<b>Shower Curtains</b>
<i>p.84</i>	<b>Amenities &amp; Personal Care</b>
<i>p.90</i>	<b>Room Supplies</b>



# ABOUT A1 AMERICAN

With roots dating back to 1911, A1 American has been a leading global manufacturer, distributor and single supply source for products within the Hospitality, Vacation Rental, Healthcare, Commercial Laundry and Fitness markets.

With its vertically integrated manufacturing supply chain process, A1 American is uniquely positioned in the marketplace to serve top-tier products with competitive pricing and the highest of customer satisfaction to our clientele - including custom branded products. Our vast product line includes all of your textile, OS&E and FF&E needs including towels, sheets, decorative bed coverings, bulk and bottled amenities, small appliances, paper products, draperies, furniture case goods and much more.

Co-headquartered in Los Angeles, CA and Atlanta, GA, we have dedicated in-house customer service and sales associates across the country to provide one-on-one support to our customers, along with 8 stocking distribution centers across the United States and Canada to ensure quick and timely service and shipments. We service a wide array of customers in the marketplace ranging from boutique independent properties to large scale branded hotels including IHG, Hilton, Best Western, Red Lion, Red Roof, Wyndham and many others.

We are Certified Minority Business Enterprise as well as certified by the NMSDC as a Minority Owned Business.

Let us make your supply solution simple!

We are genuine about our customers.

Our hard working team of diverse experts here at A1 American understand that our customers are our backbone. That is why we have been committed to meeting and surpassing our customers' expectations with the exceptional value and quality we deliver.

We stay educated on industry and consumer trends to provide necessary products and services, creating solutions for customers within the supply chain.

We are a minority owned company and recognize the importance of diversity. While we welcome different people from various walks of life, we are also very vigorous about our training, as we recognize that customer service is a staple for customer gratification.



---

## A1 AMERICAN IS ECO-FRIENDLY

A1 American recognizes that sustainability plays a vital role in the hospitality industry, as much of our success depends on preserving the natural and cultural resources of our planet. We take pride in being sustainability-minded hospitality leaders by offering an assortment of socially responsible and environmentally friendly product alternatives, for guests who are ready to take initiative with the growing industry demand to go green.

According to a recent Nielson study, nearly 75% of responders (including baby boomers and millennials) in this modern era are willing to spend more for sustainable products and services, as opposed to regular products and services, because conserving the environment is a thriving priority. As younger generations are inclined to take action to support this positive shift within the industry, a rising number of people from older generations are also expecting companies to follow this lead.

Here at A1 American, our team has adopted the principles to uphold sustainability and positive impacts on the substantial carbon footprint that can be reduced. We have established our own manufacturing mills in several locations, including base mills in Bangladesh and joint-venture partnerships in India, China and Pakistan as well.

We are in control of our own manufacturing. This allows us to also make sure to pay special attention to waste reduction, energy conservation and the precise use of organic material for our sustainable products' collection. In addition to benefiting the planet, implementing these sustainable practices can also save facility costs in the long run. We have embraced energy saving techniques to reduce our carbon footprint and in turn, improve efficiency, quality and satisfaction with our services and products, all around.

Our sustainable product collection is always expanding, as are new initiatives and trends within the Hospitality industry. A1 American team members keep current with the industry trends and essentials as they are necessitated, and goes above and beyond to provide them to our customers, tailored to their exacting needs. Some of our sustainable product options include a variety of napery, cutlery, disposable dinnerware, bathroom accessories and cleaning supplies available for purchase. A1 American's Emerald Collection also includes facial tissue alternatives, tent cards, can liners, tumblers and cup accessories and more. All of our products are personalized to suit facility and hotel needs, and backed with consumer research and years of experience in the Hospitality industry.



## A1 AMERICAN IS ECO-FRIENDLY

### A PEEK INSIDE:

A peek inside our sustainable process includes paying special attention to how our products are produced, and how this information can be beneficial to shifting to eco-friendly. Here is a glimpse of A1 American's sustainable towels production:

#### SIZE MATTERS

Paying attention to the product size in relation to the product weight is crucial. All towels have a different feel, and size makes a difference with this, as smaller towels may be plushier to the touch but weigh less than a larger towel.

#### WEIGHT IS IMPORTANT

Product weight is important, and is commonly referenced in pounds per dozen towels, not weight per towel, as a dozen is the standard UOM for selling towels. Additional information to note- case packs allow consumers to know the minimum dozen they need to purchase in a carton or bale.

#### YARN CONSTRUCTION

Yarn construction is among one of the most important components of the product, as much of the quality can be determined from this. You can typically distinguish the number of threads that make up the yarn by referencing the numbers associated with the cotton production of the product first.

A good means of noting thread strength is by evaluating the length of cotton- the lower the number is, the thicker and less durable the yarn.

Higher quality yarn is usually spun from long-staple fibers which are turned into finer and more durable threads. Yarn fibers are also doubled for additional strength.



#### TOWEL MATERIAL:

Our towels are typically made from one of two construction alternatives:

**100% COTTON** - the softer and more absorbent option, often valued at higher costs than blended material. This is a first-choice alternative to consumers who opt for a touch of colored luxury design, as Polyester does not take and retain dye evenly.

**UNIQUE COTTON/POLY BLEND**- the more durable and less costly option, towels with a cotton/poly blend are usually established with a polyester grounding and cotton fill, ensuring no significant loss of softness to the product. Cotton/Poly blended material usually withstands up to an approximated 30 more washes than 100% cotton towels and are usually quicker to dry.



#### SHIPPING OPTIONS:

A1 American offers sustainable shipping options below:

**CARTON PACKED**- Usually for smaller quantities of towels packed in cardboard boxes. Using the towels directly out of the carton may save time and money.

**BALE PACKED**- Usually for larger quantities of towels compressed into bales by machines, making it more economical to handle and ship.





# SHEETS



**SHEETS COLLECTION**

**SOLID**



**GOLDEN MILLS T-180  
SHEETS**



**GOLDEN CLOUD  
MICROFIBER SHEETS**



**GOLDEN TOUCH T-200  
SHEETS  
SOLID WHITE & SOLID BONE**



**GOLDEN SUITE T-250  
SHEETS**



**GOLDEN DECADENCE T-310  
SHEETS**

STRIPED



**GOLDEN SUITE T-250  
1/4" TONE-ON-TONE WHITE**



**GOLDEN SUITE T-250  
1" TONE-ON-TONE WHITE  
TONE-ON-TONE BONE**



**Twin - White**

**Full - Blue**

**Queen - Green**

**King - Gold**

**GOLDEN MILLS T-180**



**A1 American Golden Mills T-180 Percale Sheets are produced on high tech looms and designed to withstand timely wear and tear with a smooth look and finish.**

- Cotton/Poly Blend
- Cotton-rich feel
- Classic softness
- Single pick woven
- Operational ease
- Offers utmost durability & comfort
- Easy fit, center labeled
- Color coded for sizing
- No iron

*Solid White, Cotton/Poly Blend, 10" Pockets, Hemsizes 2" top and bottom*

ITEM	STOCK	SIZE	ITEM NUMBER
<b>Pillowcases</b>	STANDARD	42" x 34"	SHGM42X34
6 dz./cs	QUEEN	42" x 40"	SHGM42X40
	KING	42" x 46"	SHGM42X46
<b>Flat Sheets</b>	TWIN	66" x 108"	SHGM66X108
2 dz./cs	TWIN XL	66" x 115"	SHGM66X115
	FULL	81" x 115"	SHGM81X115
	QUEEN	90" x 115"	SHGM90X115
	KING	108" x 115"	SHGMA108X115
<b>Fitted Sheets</b>	TWIN	39" x 80"	SHGMAF39X80
2 dz./cs	FULL	54" x 80"x 10"	SHGMAF54X80
	QUEEN	60" x 80"x 10"	SHGMAF60X80
	CAL KING	72" x 84"x 10"	SHGMAF72X84
	DUAL KING	78" x 80"x 10"	SHGMAF78X80

*\*Hem colors may vary between collections.*



## GOLDEN CLOUD



**A1 American Golden Cloud Microfiber sheets are engineered for a soft, crisp and comfortable feel. The sheets features a smooth and breathable finish. Your guests will feel the difference, CLEAN and FRESH.**

- Plain Weave
- Wrinkle Resistant
- Comfortable
- Environmentally friendly using less water and drying time.

*Solid White, 100% Polyester microfiber, 120gsm, 15" Pockets*

ITEM	STOCK	SIZE	ITEM NUMBER
<b>Pillowcases</b>	STANDARD	42" x 34"	SHGC42X34
<b>6 dz. / cs</b>	QUEEN	42" x 40"	SHGC42X40
	KING	42" x 46"	SHGC42X46
<b>Flat Sheets</b>	TWIN	66" x 115"	SHGC66X115
<b>2 dz. / cs.</b>	FULL	81" x 115"	SHGC81X115
	QUEEN	92" x 115"	SHGC92X115
	KING	110" x 115"	SHGCA110X115
<b>Fitted Sheets</b>	TWIN	39" x 75" x 15"	SHGCAF39X75X15
<b>2 dz. / cs.</b>	FULL	54" x 75" x 15"	SHGCAF54X75X15
	QUEEN	60" x 80" x 15"	SHGCAF60X80X15
	KING	78" x 80" x 15"	SHGCAF78X80X15

*\*Hem colors may vary between collections.*



**GOLDEN TOUCH T-200 SOLID WHITE**



**A1 American Golden Touch T200 Percale Sheets are manufactured uniquely to provide your guests with a comfortable & durable experience.**

- These sheets are woven with single pick yarns of 60/40% Cotton/Polyester blend
- Strong, durable yet affordable sheets that offer your guests a comfortable experience
- 12" or 15" Deep Pocket Fit - Elastic all the way around
- Versatile and dependable sheets perfectly suitable for many industries, including:
  - Hospitality
  - Spa and fitness
  - Healthcare
  - Institutional
- Easy fit, center labeled
- Color coded for sizing
- No iron

*Solid White, 60/40, 12" or 15" Pockets, Hemsized 2" top and bottom*

ITEM	STOCK	SIZE	ITEM NUMBER
Pillowcases 6 dz. / cs	STANDARD	42" x 36"	SHGT42X36
	QUEEN	42" x 40"	SHGT42X40
	KING	42" x 46"	SHGT42X46
Flat Sheets 2 dz. / cs.	TWIN	66" x 108"	SHGT66X108
	TWIN XL	66" x 115"	SHGT66X115
	FULL	81" x 108"	SHGT81X108
	FULL XL	84" x 115"	SHGT84X115
	QUEEN	92" x 115"	SHGT92X115
	QUEEN XL	96" x 120"	SHGT96X120
	KING	110" x 115"	SHGTA110X115
Fitted Sheets 2 dz. / cs.	KING XL	116" x 120"	SHGTA116X120
	TWIN	39" x 80" x 12"	SHGTAF39X80
	FULL	54" x 80" x 15"	SHGTAF54X80X14
	QUEEN	60" x 80" x 15"	SHGTAF60X80X15
	CAL KING	72" x 84" x 15"	SHGTAF72X84X15
	DUAL KING	78" x 80" x 15"	SHGTAF78X80X15



## GOLDEN TOUCH T-200 SOLID BONE



**A1 American Golden Touch T200 Percale Sheets are manufactured uniquely to provide your guests with a comfortable & durable experience.**

- These sheets are woven with single pick yarns of 60/40% Cotton/Polyester blend
- Strong, durable yet affordable sheets that offer your guests a comfortable experience
- 12" or 15" Deep Pocket Fit
- Available in Solid White or Bone
- Versatile and dependable sheets perfectly suitable for many industries, including:
  - Hospitality
  - Spa and fitness
  - Healthcare
  - Institutional
- Easy fit, center labeled
- Color coded for sizing
- No iron

*Solid Bone, 60/40, 12" or 15" Pockets, Hemsized 2" top and bottom*

ITEM	STOCK	SIZE	ITEM NUMBER
<b>Pillowcases</b>	STANDARD	42" x 36"	SHGTB42X36
6 dz./cs	QUEEN	42" x 40"	SHGTB42X40
	KING	42" x 46"	SHGTB42X46
<b>Flat Sheets</b>	TWIN	66" x 108"	SHGTB66X108
2 dz./cs	TWIN XL	66" x 115"	SHGTB66X115
	FULL	81" x 108"	SHGTB81X108
	FULL XL	81" x 115"	SHGTB81X115
	QUEEN	90" x 115"	SHGTB90X115
	KING	108" x 115"	SHGTBA108X115
<b>Fitted Sheets</b>	TWIN	39" x 80" x 12"	SHGTBF39X80
2 dz./cs	FULL	54" x 80" x 15"	SHGTBF54X80
	QUEEN	60" x 80" x 15"	SHGTBF60X8014
	CAL KING	72" x 84" x 15"	SHGTBF72X84X14
	DUAL KING	78" x 80" x 15"	SHGTBF78X8014



**GOLDEN SUITE T-250**



**A1 American Golden Suite T250 Percale Sheets are manufactured to maximize on durability and support while minimizing on costs.**

- These quality sheets are produced with single pick woven yarns of 60/40% Cotton/Polyester blend
- Manufactured specifically with the hospitality industry in mind to maximize affordability and durability
- Offer your guests a cotton-rich, elegant yet durable feel
- 15" Deep Pocket fit - Elastic all the way around
- Easy fit, center labeled
- Color coded for sizing
- No iron

*60/40, 15" Pockets, Hemsized 2" top and bottom*

ITEM	STOCK	SIZE	ITEM NUMBER
<b>Pillowcases</b>	STANDARD	42" x 36"	SHGSW42X36
<b>6 dz. / cs</b>	QUEEN	42" x 40"	SHGSW42X40
	KING	42" x 46"	SHGSW42X46
<b>Flat Sheets</b>	TWIN	66" x 115"	SHGSW66X115
<b>2 dz. / cs.</b>	FULL	84" x 115"	SHGSW84X115
	QUEEN	92" x 115"	SHGSW92X115
	QUEEN XL	96" x 120"	SHGSW96X120
	KING	110" x 115"	SHGSWA110X115
	KING XL	116" x 120"	SHGSWA116X120
<b>Fitted Sheets</b>	TWIN	39" x 80" x 15"	SHGSWAF39X80X14
<b>2 dz. / cs.</b>	FULL	54" x 80" x 15"	SHGSWAF54X80X14
	QUEEN	61" x 81" x 15"	SHGSWAF61X81X15
	CAL KING	73" x 85" x 15"	SHGSWAF73X85X15
	DUAL KING	79" x 81" x 15"	SHGSWAF79X81X15



## GOLDEN DECADENCE T-310



**A1 American T-310 Golden Decadence sheets are designed to produce an all encompassing pinnacle of quality, opulence and performance and sure to add a lasting impression to your bedding collection.**

- Ultimate in luxury, quality, and performance
- Woven with a 60/40% Ring spun combed cotton/polyester blend
- Hemsized 2" top and bottom
- Blended fabric for an aesthetic look and improved texture/feel
- Basket weave pattern increases durability and elasticity
- Sheets are manufactured to be wrinkle-resistant
- 14" or 15" deep pocket fit - Elastic all the way around
- Quicker laundry drying time and decreased shrinkage
- Accommodates mattress depths up to 15"
- Available in: Solid White
- Easy fit, center labeled
- Color coded for sizing
- No iron

*60/40, 14" or 15" Pockets, Hemsized 2" top and bottom*

ITEM	STOCK	SIZE	ITEM NUMBER
<b>Pillowcases</b>	STANDARD	42" x 36"	SHGDE42X36
<b>6 dz. / cs</b>	QUEEN	42" x 40"	SHGDE42X40
	KING	42" x 46"	SHGDE42X46
<b>Flat Sheets</b>	TWIN	72" x 120"	SHGDE72X120
<b>2 dz. / cs.</b>	FULL	87" x 120"	SHGDE87X120
	QUEEN	96" x 120"	SHGDE96X120
	KING XL	116" x 120"	SHGDEA116X120
<b>Fitted Sheets</b>	TWIN XL	39" x 80" x 14"	SHGDEAF39X80X14
<b>2 dz. / cs.</b>	FULL XL	54" x 80" x 14"	SHGDEAF54X80X14
	QUEEN	61" x 81" x 15"	SHGDEAF61X81X15
	CAL KING	73" x 85" x 15"	SHGDEAF73X85X15
	DUAL KING	79" x 81" x 15"	SHGDEAF79X81X15



## GOLDEN SUITE T-250 1/4" TONE-ON-TONE WHITE



**A1 American Golden Suite T250 Percale Sheets are manufactured to maximize on durability and support while minimizing on costs.**

- These quality sheets are produced with single pick woven yarns of 60/40% Cotton/Polyester blend
- Manufactured specifically with the hospitality industry in mind to maximize affordability and durability
- Offer your guests a cotton-rich, elegant yet durable feel
- 12" or 15" Deep Pocket fit - Elastic all the way around
- Easy fit, center labeled
- Color coded for sizing
- No iron

*1/4" White/White Pinstripe, 60/40, 12" or 15" Pockets, Hemsized 2" top and bottom*

ITEM	STOCK	SIZE	ITEM NUMBER
<b>Pillowcases</b>	STANDARD	42" x 36"	SHGSAP42X36
<b>6 dz. / cs</b>	QUEEN	42" x 40"	SHGSAP42X40
	KING	42" x 46"	SHGSAP42X46
<b>Flat Sheets</b>	TWIN	66" x 115"	SHGSAP66X115
<b>2 dz. / cs.</b>	FULL	84" x 115"	SHGSAP84X115
	QUEEN	92" x 115"	SHGSAP92X115
	QUEEN XL	96" x 120"	SHGSAP96X120
	KING	110" x 115"	SHGSAPA110X115
	KING XL	116" x 120"	SHGSAPA116X120
<b>Fitted Sheets</b>	TWIN	39" x 75" x 12"	SHGSAPAF39X75
<b>2 dz. / cs.</b>	FULL	54" x 80" x 15"	SHGSAPAF54X80X14
	QUEEN	60" x 80" x 15"	SHGSAPAF60X8015
	CAL KING	72" x 84" x 15"	SHGSAPAF72X84X15
	DUAL KING	78" x 80" x 15"	SHGSAPAF78X80X15



## GOLDEN SUITE T-250 1" TONE-ON-TONE WHITE



**A1 American Golden Suite T-250 Percale Sheets are manufactured to maximize on durability and support while minimizing on costs.**

- These quality sheets are produced with single pick woven yarns of 60/40% Cotton/Polyester blend
- Manufactured specifically with the hospitality industry in mind to maximize affordability and durability
- Offer your guests a cotton-rich, elegant yet durable feel
- 12" or 15" Deep Pocket fit - Elastic all the way around
- Easy fit, center labeled
- Color coded for sizing
- No iron

*1" White/White Stripe, 60/40, 12" or 15" Pockets, Hemsized 2" top and bottom*

ITEM	STOCK	SIZE	ITEM NUMBER
<b>Pillowcases</b>	STANDARD	42" x 36"	SHGS42X36
<b>6 dz. / cs</b>	QUEEN	42" x 40"	SHGS42X40
	KING	42" x 46"	SHGS42X46
<b>Flat Sheets</b>	TWIN	66" x 115"	SHGS66X115
<b>2 dz. / cs.</b>	FULL	84" x 115"	SHGS84X115
	QUEEN	92" x 115"	SHGS92X115
	QUEEN XL	96" x 120"	SHGS96X120
	KING	110" x 115"	SHGSA110X115
	KING XL	116" x 120"	SHGSA116X120
<b>Fitted Sheets</b>	TWIN	39" x 80" x 12"	SHGSAF39X80
<b>2 dz. / cs.</b>	FULL	54" x 80" x 15"	SHGSAF54X80X14
	QUEEN	60" x 80" x 15"	SHGSAF60X80X15
	CAL KING	72" x 84" x 15"	SHGSAF72X84X15
	DUAL KING	78" x 80" x 15"	SHGSAF78X80X15







# TERRY TOWELS



## TERRY TOWELS COLLECTION

### VALUE



### GOLDEN CAMELOT TOWELS

### DELUXE



### GOLDEN CAM TOWELS

# SUPERIOR



**GOLDEN ROYAL  
TOWELS**



**GOLDEN TOUCH  
TOWELS WHITE**



**GOLDEN TOUCH  
TOWELS ECRU**



**GOLDEN SUMMIT  
TOWELS**

# PREMIUM



**GOLDEN OVERTURE  
TOWELS**



**GOLDEN SPLENDOR  
TOWELS**



**GOLDEN DECADENCE  
TOWELS**



**GOLDEN CAMELOT**



**GOLDEN CAM**



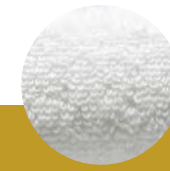
**GOLDEN ROYAL**



**GOLDEN TOUCH  
(WHITE)**



**GOLDEN TOUCH  
(ECRU)**



**GOLDEN SUMMIT  
(HEM, NO BORDER)**



**GOLDEN OVERTURE**



**GOLDEN SPLENDOR**



**GOLDEN DECADENCE**



**GOLDEN SQUARE  
BATH MATS**

**GOLDEN CAMELOT**



**Golden Camelot is our popular and cost-effective towel line, designed to out-perform standard terry towels, while retaining durability and comfort**

- These towels have a cam border made from 86% cotton/14% polyester blended yarn for reduced shrinkage and longer lifespan.
- The sides are lock stitched hemming to prevent unraveling.
- The line was made for the value driven hospitality, institutional, healthcare and health club markets to make a quality impression, while still priced very affordably.
- Golden Camelot is packed in a bale-packed compressed bulk format which benefits our environment by reducing its carbon footprint.

**GOLDEN CAMELOT**

*86% Cotton 14% Polyester, Cam Border*

ITEM	SIZE	WEIGHT	CASE PACK	ITEM NUMBER
Wash Cloths	12" x 12"	.75 lb.	10 dz.	TWGC12X12-.75
	12" x 12"	1.00 lb.	50 dz.	TWGC12X12-1
Hand Towels	15" x 25"	2.50 lb.	25 dz.	TWGC15X25
	16" x 27"	2.75 lb.	25 dz.	TWGC16X27HW
Bath Towels	20" x 40"	4.50 lb.	25 dz.	TWGC20X40STD
	20" x 40"	5.00 lb.	25 dz.	TWGC20X40HW
	22" x 44"	5.75 lb.	25 dz.	TWGC22X44-25
	22" x 44"	6.00 lb.	10 dz.	TWGC22X44HW-25
	24" x 48"	8.00 lb.	10 dz.	TWGC24X48
	24" x 50"	10.00 lb.	10 dz.	TWGC24X50
	25" x 52"	12.00lb	10 dz.	TWGC25X52-10
	20" x 30"	7.00 lb.	10 dz.	TWGS20X30
Bath Mat (Golden Square*)				

*\*Golden Square Bath Mats are made of 86% Cotton/14% Polyester and feature a simple square pattern border*



**GOLDEN CAM**



**Golden Cam is our highest quality cam border towel line.**

- 100% ringspun cotton
- Plush look and feel to add to your ideal experience
- Excellent absorbency for your quick dry solutions
- The towel has a soft, plush hand feel and offers excellent absorbency and dries quickly.
- Double and lock stitched hemming to prevent hems from unraveling
- The line was specifically crafted for the hospitality market to make a lasting, quality impression, while at the same time, still priced affordably
- Golden Cam is packed in condensed bulk format to be eco-friendly & reduce carbon footprint

**GOLDEN CAM**

*100% Ring-Spun Cotton, Cam Border*

ITEM	SIZE	WEIGHT	CASE PACK	ITEM NUMBER
Wash Cloths	12" x 12"	1.00 lb.	25 dz.	TGC12X12
Hand Towels	16" x 27"	3.00 lb.	10 dz.	TGC16X27
Bath Towels	20" x 40"	5.50 lb.	10 dz.	TGC20X40
	22" x 44"	6.25 lb.	10 dz.	TGC22X44
	24" x 48"	8.00 lb.	5 dz.	TGC24X48
	24" x 50"	10.50 lb.	5 dz.	TGC24X50
	25" x 52"	12.00 lb.	4 dz.	TGC25X52
	27" x 54"	14.00 lb.	3 dz.	TGC27X54
Bath Mat (Golden Square*)	20" x 30"	7.00 lb.	10 dz.	TWGS20X30

*\*Golden Square Bath Mats are made of 86% Cotton/14% Polyester and feature a simple square pattern border*



**GOLDEN ROYAL**



**A1 American Golden Royal collection is a classic, affordable hospitality towel line with a unique dobby border.**

- 100% ringspun cotton with a dobby border design
- Soft & plush feel with excellent absorbency & quick dry solution
- Crafted uniquely for the hospitality market with affordable pricing
- Includes double & lock stitched hemming
- Packed in condensed bulk format to be eco-friendly & reduce carbon footprint

**GOLDEN ROYAL**

*100% Ring-Spun Cotton, Unique Dobby Border*

ITEM	SIZE	WEIGHT	CASE PACK	ITEM NUMBER
Wash Cloths	13" x 13"	1.50 lb.	25 dz.	TGTR13X13
Hand Towels	16" x 30"	4.50 lb.	10 dz.	TGTR16X30-4.5#
Bath Towels	27" x 50"	14.00 lb.	3 dz.	TGTR27X50-14#
Bath Mat (Golden Square*)	20" x 30"	7.00 lb.	10 dz.	TWGS20X30

*\*Golden Square Bath Mats are made of 86% Cotton/14% Polyester and feature a simple square pattern border*



**GOLDEN TOUCH WHITE**



**A1 American Golden Touch-white is a best-selling towel line with a distinct Herringbone & Dobby Border Design.**

- 100% ringspun cotton with a Herringbone Dobby border design
- Soft & delicate feel with excellent absorbency & quick dry solution
- Crafted uniquely for the hospitality market with affordable pricing
- Includes double & lock stitched hemming
- Packed in condensed bulk format to be eco-friendly & reduce carbon footprint

**GOLDEN TOUCH - WHITE**

*100% Ring-Spun Cotton, Herringbone Dobby Border*

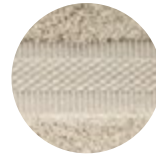
ITEM	SIZE	WEIGHT	CASE PACK	ITEM NUMBER
Wash Cloths	12" x 12"	1.00 lb.	25 dz.	TGT12X12
	13" x 13"	1.50 lb.	25 dz.	TGT13X13
Hand Towels	16" x 27"	3.25 lb.	10 dz.	TGT16X27
	16" x 30"	4.50 lb.	10 dz.	TGT16X30-4.5#
Bath Towels	24" x 50"	10.50 lb.	5 dz.	TGT24X50
	25" x 52"	12.00 lb.	3 dz.	TGT25X52
	27" x 54"	14.00 lb.	3 dz.	TGT27X54-14#
	27" x 54"	15.00 lb.	3 dz.	TGT27X54-15#
	27" x 54"	17.00 lb.	3 dz.	TGT27X54-17#
Bath Mat (Golden Square*)	22" x 34"	10.00 lb.	5 dz.	TWGS22X34

*\*Golden Square Bath Mats are made of 86% Cotton/14% Polyester and feature a simple square pattern border*





**GOLDEN TOUCH ECRU**



**A1 American Golden Touch-Ecru is our best-selling towel line with a distinct Herringbone & Dobby Border Design.**

- 100% ringspun cotton with a Herringbone Dobby border design
- Soft & delicate feel with excellent absorbency & quick dry solution
- Crafted uniquely for the hospitality & health club markets with affordable pricing
- Includes double & lock stitched hemming
- Packed in condensed bulk format to be eco-friendly & reduce carbon footprint

**GOLDEN TOUCH - ECRU**

*100% Ring-Spun Cotton, Herringbone Dobby Border*

ITEM	SIZE	WEIGHT	CASE PACK	ITEM NUMBER
Wash Cloths	12" x 12"	1.00 lb.	25 dz.	TGTEC12X12
	13" x 13"	1.50 lb.	25 dz.	TGTEC13X13
Hand Towels	16" x 27"	3.25 lb.	10 dz.	TGTEC16X27
	16" x 30"	4.50 lb.	10 dz.	TGTEC16X30-4.5#
Bath Towels	24" x 50"	10.50 lb.	5 dz.	TGTEC24X50
	25" x 52"	12.00 lb.	3 dz.	TGTEC25X52
	27" x 54"	14.00 lb.	3 dz.	TGTEC27X54-14#
	27" x 54"	15.00 lb.	3 dz.	TGTEC27X54-15#
Bath Mat	27" x 54"	17.00 lb.	3 dz.	TGTEC27X54-17#
	20" x 30"	7.00 lb.	10 dz.	TGTEC20X30
	22" x 34"	10.00 lb.	5 dz.	TGTEC22X34



**GOLDEN SUMMIT**



**A1 American Golden Summit is our newest full terry featuring a twill hem, and options for mainstream, upscale and luxury properties.**

- 100% Cotton
- Color: White
- Full Terry with Twill Hem
- Soft & delicate feel with excellent absorbency & quick dry solution
- Crafted uniquely for the hospitality market with affordable pricing

**GOLDEN SUMMIT**

*100% Cotton, Full Terry with Twill Hem*

ITEM	SIZE	WEIGHT	CASE PACK	ITEM NUMBER
Wash Cloths	12x12	1.0 lb.	360 each	TGSM12X12
	13x13	1.7 lb.	216 each	TGSMU13X13
Hand Towels	16x30	3.3 lb.	108 each	TGSM16X30
	16x30	4.6 lb.	72 each	TGSMU16X30
Bath Towels	27x54	12.5 lb.	28 each	TGSM27X54
	27x56	14.8 lb.	24 each	TGSMU27X56
	30x60	16.7 lb.	18 each	TGSMU30X60
Bath Mats	20x30	6.4 lb.	60 each	TGSM20X30
	21x34	8.5 lb.	36 each	TGSMU21X34



**GOLDEN OVERTURE**

**A1 American Golden Overture is a premium luxury towel line with a refined piano border design.**

- 100% ringspun cotton with a distinguished piano border design
- Soft & elegant feel with excellent absorbency & quick dry solution
- Double & lock stitched hemming for upscale hospitality with affordable pricing
- Packed in condensed bulk format to be eco-friendly & reduce carbon footprint



**GOLDEN OVERTURE**

*100% Ring-Spun Cotton, Piano Key Dobby Border*

ITEM	SIZE	WEIGHT	CASE PACK	ITEM NUMBER
Wash Cloths	13" x 14"	1.50 lb.	25 dz.	TGO13X14
Hand Towels	16" x 32"	4.75 lb.	10 dz.	TGO16X32
Bath Sheets	30" x 56"	18.00 lb.	3 dz.	TGO30X56
Bath Mat (Golden Square*)	20" x 30"	7.00 lb.	10 dz.	TWGS20X30
(Golden Square*)	22" x 34"	10.00 lb.	5 dz.	TWGS22X34

*\*Golden Square Bath Mats are made of 86% Cotton/14% Polyester and feature a simple square pattern border*



**GOLDEN SPLENDOR**



**A1 American Golden Splendor is a luxury towel line with an upscale chekered Border.**

- 100% combed ringspun cotton with a Checkered Dobby border design
- Has 2-ply cotton yarns for classic sizing
- Soft & plush feel with excellent absorbency & quick dry solution
- Double & lock stitched hemming for upscale hospitality & high-end health club(s)
- Packed in condensed bulk format to be eco-friendly & reduce carbon footprint

**GOLDEN SPLENDOR**

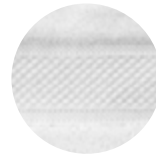
*100% Ring-Spun Cotton, chekered Dobby Border*

ITEM	SIZE	WEIGHT	CASE PACK	ITEM NUMBER
Wash Cloths	13" x 13"	1.50 lb.	25 dz.	TGS13X13
Hand Towels	16" x 30"	4.50 lb.	10 dz.	TGS16X30
Bath Towels	27" x 54"	14.00 lb.	3 dz.	TGS27X54-14
	27" x 54"	15.00 lb.	3 dz.	TGS27X54-15
	27" x 54"	17.00 lb.	3 dz.	TGS27X54-17
Bath Sheets	35" x 70"	22.00 lb.	2 dz.	TGS35X70
Bath Mat	22" x 34"	10.00 lb.	5 dz.	TGS22X34





### GOLDEN DECADENCE



**A1 American Golden Decadence is a luxurious and versatile towel line with a distinct Dobby Border design.**

- 100% combed cotton
- Soft & deluxe look & feel
- Double and lock stitched hemming.
- The line was specifically crafted for the upscale hospitality markets to make a lasting, quality impression.
- Offers excellent absorbency and dries quickly.
- Golden Decadence is packed in a condensed, bulk format which benefits our environment by reducing its carbon footprint.

### GOLDEN DECADENCE

*100% Ring-Spun Cotton, Luxury Dobby Border*

ITEM	SIZE	WEIGHT	CASE PACK	ITEM NUMBER
Wash Cloths	13" x 13"	1.50 lb.	25 dz.	TGDE13X13
Hand Towels	16" x 30"	4.50 lb.	10 dz.	TGDE16X30
Bath Towels	27" x 54"	14.00 lb.	3 dz.	TGDE27X54-14
	27" x 54"	17.00 lb.	3 dz.	TGDE27X54-17
Bath Sheets	35" x 70"	22.00 lb.	2 dz.	TGDE35X70
Bath Mat	22" x 34"	10.00 lb.	5 dz.	TWGS22X34

*\*Golden Square Bath Mats are made of 86% Cotton/14% Polyester and feature a simple square pattern border*



**GOLDEN SQUARE BATH MATS**



**Golden Square is our universal high-absorbency quality line of bath mats.**

- Made of 86% cotton and 14% polyester blended yarn that reduces shrinkage and provides a longer life span.
- Features a simple square border that compliments all decor styles.
- Soft, plush feel with exceptional absorbency and quick drying.
- The line was specifically crafted with universality in mind, and looks right at home in any hospitality, institutional, healthcare and health club environment.

**GOLDEN SQUARE BATH MATS**

*86% cotton and 14% polyester blended yarn*

ITEM	SIZE	WEIGHT	CASE PACK	ITEM NUMBER
Golden Touch Bath Mats	20x30	7.00 lb.	10 dz.	TWGS20X30
	22x34	10.00 lb.	5 dz.	TWGS22X34

*\*Golden Square Bath Mats are made of 86% Cotton/14% Polyester and feature a simple square pattern border*



UTILITY



Burgundy

Hunter Green

Royal Blue



Red

Navy

Grey



Brown

Black



**A1 AMERICAN GOLDEN CAMELOT COLORED HAND TOWELS ARE CONSTRUCTED WITH HIGH QUALITY MATERIAL FOR MAXIMUM EFFICIENCY & A TOUCH OF COLOR.**

- These hand towels are woven with a 86% Cotton/14% Polyester Blend
- Offers an Open Ended Weave
- Blended Terry which will give your facility a touch of color
- Offers 100% cotton loops to provide extra absorbency for your residents
- Nine colors available & two bleach-proof options
- 16 Singles construct
- Constructed For Durability & Institutional Use
- Silver Level

**GOLDEN CAMELOT SOLID COLOR UTILITY HAND TOWELS**

86% Cotton 14% Polyester, Cam Border

ITEM	SIZE	WEIGHT	CASE PACK	ITEM NUMBER
Solid Black	16" x 27"	3.00 lb.	25 dz.	BTY16X27BLACK-25DZ
Solid Brown	16" x 27"	3.00 lb.	25 dz.	BTY16X27BROWN-25DZ
Solid Burgundy	16" x 27"	3.00 lb.	25 dz.	BTY16X27BURG
Solid Dark Grey	16" x 27"	3.00 lb.	25 dz.	BTY16X27GREYDK
Solid Hunter Green	16" x 27"	3.00 lb.	25 dz.	BTY16X27HUNTERG
Solid Navy Blue	16" x 27"	3.00 lb.	25 dz.	BTY16X27NAVY
Solid Red	16" x 27"	3.00 lb.	25 dz.	BTY16X27RED
Solid Royal Blue	16" x 27"	3.00 lb.	25 dz.	BTY16X27ROYALBLUE
Solid Seafoam Green	16" x 27"	3.00 lb.	25 dz.	BTY16X27SG
Solid Teal	16" x 27"	3.00 lb.	25 dz.	BTY16X27TEAL
Solid Black - Bleachproof	16" x 27"	3.00 lb.	10 dz.	BTYBP16X27BLACK
Solid Brown - Bleachproof	16" x 27"	3.00 lb.	10 dz.	BTYBP16X27BROWN
Black w/ White Embroidery Cosmetic	12" x 12"	1.00 lb.	25 dz.	BTY12X12BLACK



UTILITY



**A1 AMERICAN PREMIUM TERRY BLUE STRIPE TOWELS ARE A PREFERRED COST-EFFECTIVE TOWEL WITH A DISTINCT CAM BORDER DESIGN.**

- Unique center blue stripe design for touch of color
- 100% Cotton
- Lock stitched hemming to prevent unraveling
- The line was made for the institutional hospitality, healthcare and health club markets to make a quality impression, while still priced affordably
- Offers great absorbency, longevity and dries quickly
- Premium Terry is packed in condensed bulk format to be eco-friendly & reduce carbon footprint



**A1 AMERICAN BAR MOPS ARE A POPULAR AND ECONOMICAL CLEANING TOOL FOR ALL PURPOSES.**

- 100% Cotton Yarn construction
- Very absorbent for basic cleaning
- Ideal for spillage & can withstand stains
- Guaranteed to last through repeated use and wash



CENTER BLUE STRIPE HAND TOWELS

COLOR	SIZE	WEIGHT	CASE PACK	ITEM NUMBER
Premium Terry - 100% Cotton, White w/ Color Stripe				
Center Blue Stripe	16" x 27"	2.62 lb.	25 dz.	TWTBS16X27
Golden Camelot - 86% Cotton / 14% Polyester, White w/ Color Stripe				
Center Blue Stripe	16" x 27"	2.75 lb.	25 dz.	TWGCBS16X27

*(Larger size Center Blue Stripe Towels can be found in Pool Towels)*

BAR MOPS

100% Cotton Terry, White w/ Color Stripe

COLOR	SIZE	WEIGHT	CASE PACK	ITEM NUMBER
Blue Stripe	16" x 19"	30 oz.	50 dz.	HSKBMBLUS30
Gold Stripe	16" x 19"	30 oz.	50 dz.	HSKBMGOLS30
Green Stripe	16" x 19"	30 oz.	50 dz.	HSKBMGRNS30
Solid White	16" x 19"	30 oz.	50 dz.	HSKBMT30
Solid White	16" x 19"	24 oz.	50 dz.	HSKBM24





CLEANING



**A1 AMERICAN MICROFIBER TOWELS ARE VERSATILE IN USE AND VERY CONVENIENT TO USE WHEN IN NEED OF A CLEAN, A DRY, A DUST OR POLISH.**

- Saves you money - machine wash and re-use over 500 times.
- Easy to use and leave no trace of lint or streaks behind on surfaces.
- They do not scratch and are safe to use on any surface.
- Lifts and traps dirt & moisture.
- Extremely absorbent, absorbs up to 7 times its weight in water
- Hypo-allergenic, safe for asthmatics and allergy sufferers
- Reduces bacteria

**MICROFIBER TOWELS**

80% Polyester 20% Polyamide, Solid Color

COLOR	SIZE	WEIGHT	CASE PACK	ITEM NUMBER
Solid Black	16" x 16"	300 GSM	25 dz.	HSKMICROFIBERBLACK
Solid Blue	16" x 16"	300 GSM	25 dz.	HSKMICROFIBERBLUE
Solid Green	16" x 16"	300 GSM	25 dz.	HSKMICROFIBERGREEN
Solid Orange	16" x 16"	300 GSM	25 dz.	HSKMICROFIBERORANGE
Solid Red	16" x 16"	300 GSM	25 dz.	HSKMICROFIBERRED
Solid White	16" x 16"	300 GSM	25 dz.	HSKMICROFIBERW
Solid Yellow	16" x 16"	300 GSM	25 dz.	HSKMICROFIBERYELLOW
Solid Navy	16" x 16"	300 GSM	25 dz.	HSKMICROFIBERNAVY

**THE EFFICIENT ALTERNATIVE:**

- (↔) Microfiber is 1/6 the width of human hair, which means it can hold eight times its weight in water
- ↔ It has special tiny channels designed to capture dirt, bacteria and chemicals
- ⚡ Microfiber strands are split 10 times, which creates positive electric charge; the dirt and dust particles have a negative charge, attracting dirt to the microfiber
- 🦠 When bacteria is removed after cleaning with microfiber, there can be a 99% reduction in bacteria, compared to using regular cloth.
- 🧴 Using Microfiber means using less chemicals in the average cleaning, leading to less contamination.
- 🧪 According to EPA, this can result in up to a 95% reduction to cleaning chemicals in the water supply



KITCHEN



Green

Beige

Mauve



**A1 AMERICAN'S TOP QUALITY KITCHEN TOWELS COME IN A VARIETY OF COLORS AND TEXTURES, IDEAL FOR MAXIMUM CLEANLINESS, ABSORBENCY AND SANITARY USE.**

- Premium Quality
- Softness that lasts after use
- Competitively priced options
- Available in colors: Beige, Green, Mauve, Blue Tile

KITCHEN TOWELS

ITEM	SIZE	COLOR	CASE PACK	ITEM NUMBER
Kitchen Towels	15" x 25"	Beige	12 dz.	HSK15X25BE
	15" x 25"	Green	12 dz.	HSK15X25GRN
	15" x 25"	Mauve	12 dz.	HSK15X25MAU
	15" x 25"	Blue Tile	50 dz.	HSK15X25ZBLUETILE

DISHCLOTHS

ITEM	SIZE	COLOR	CASE PACK	ITEM NUMBER
Dishcloths	12" x 12"	Beige	48 dz.	HSK12X12BE
	12" x 12"	Green	48 dz.	HSK12X12GRN
	12" x 12"	Mauve	48 dz.	HSK12X12MAU

POT HOLDERS

ITEM	SIZE	COLOR	CASE PACK	ITEM NUMBER
Pot Holders	7" x 7"	Beige	24 dz.	HSK7X7BE
	7" x 7"	Green	24 dz.	HSK7X7GRN
	7" x 7"	Mauve	24 dz.	HSK7X7MAU



KITCHEN



**A1 AMERICAN'S KITCHEN DISH CLOTHS MULTI- COLOR CHECKED COLLECTION**

- 100% cotton 2-ply comes in a solid yard dyed and a combination checked pattern
- A simple style that is functional and appealing
- Easy to blend into any décor



Tan/Green Checked



White/Tan Checked



White/Blue Checked



White/Green Checked

**KITCHEN TOWELS**

ITEM	SIZE	COLOR	CASE PACK	ITEM NUMBER
Potholder	7" x 7"	Tan/Green Checked	24 dz.	C1878TH
Potholder	7" x 7"	White/Tan Checked	24 dz.	C1878WB
Potholder	7" x 7"	White/Blue Checked	24 dz.	C1878-WBL
Potholder	7" x 7"	White/Green Checked	24 dz.	C1878-WHG
Kitchen Towel	15" x 25"	Tan/Green Checked	12 dz.	C1880TH
Kitchen Towel	15" x 25"	White/Blue Checked	12 dz.	C1880-WBL
Kitchen Towel	15" x 25"	White/Tan Checked	12 dz.	C1880-WHB
Kitchen Towel	15" x 25"	White/Green Checked	12 dz.	C1880-WHG
Dishcloth	12" x 12"	Tan/Green Checked	24 dz.	C1881TH
Dishcloth	12" x 12"	White/Blue Checked	24 dz.	C1881-WBL
Dishcloth	12" x 12"	White/Tan Checked	24 dz.	C1881WHB
Dishcloth	12" x 12"	White/Green Checked	24 dz.	C1881WHG





**POOL  
TOWELS**



POOL TOWELS COLLECTION



**GOLDEN JEWEL  
CABANA STRIPE  
POOL TOWELS**



**PREMIUM TERRY  
BLUE STRIPE  
TOWELS**



**GOLDEN CAMELOT  
BLUE STRIPE  
TOWELS**



**GOLDEN MILLS  
SOLID COLORED  
POOL TOWELS**



**BREEZE  
POOL  
TOWELS**



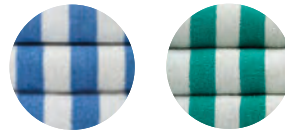
**GOLDEN JEWEL  
SOLID WHITE  
POOL TOWELS**



**GOLDEN TOUCH  
POOL  
TOWELS**

# POOL TOWELS COLLECTION

## GOLDEN JEWEL STRIPED



**A1 American Golden Jewel Pool Towels are woven with a blend of aesthetic colors to provide excellent absorbency and a lasting impression.**

- 86%/14% Ringspun Cotton
- Woven on high quality shuttleless looms
- Utilizes double lock stitched hemming to prevent hems from unraveling
- Towel offers a soft, plush feel to the touch
- Offers excellent absorbency and quick dry
- Uniquely preferred for hospitality and health club markets to make a lasting impression
- Affordable pricing
- Packed in bale-packed compressed bulk format which benefits our environment by reducing its carbon footprint.

## GOLDEN JEWEL STRIPED POOL TOWELS

*100% Ring-Spun Cotton, White w/ Color Stripes*

COLOR	SIZE	WEIGHT	CASE PACK	ITEM NUMBER
Beige 2" Cabana Stripes	24" x 50"	11.00 lb.	3 dz.	BSR24X50ZBEIGEST
Blue 2" Cabana Stripes	24" x 50"	11.00 lb.	3 dz.	BSR24X50ZBLUEST
Beige 2" Cabana Stripes	30" x 66"	13.00 lb.	3 dz.	BSR30X66ZBEIGEST
Blue 2" Cabana Stripes	30" x 66"	13.00 lb.	3 dz.	BSR30X66ZBLUEST
Beige 2" Cabana Stripes	35" x 70"	17.00 lb.	3 dz.	BSR35X70BEIGEST
Blue 2" Cabana Stripes	35" x 70"	17.00 lb.	3 dz.	BSR35X70BLUEST
Green 2" Cabana Stripes	35" x 70"	17.00 lb.	3 dz.	BSR35X70GREENST





## POOL TOWELS COLLECTION

### GOLDEN JEWEL CABANA STRIPE



**All American Golden Jewel Pool Towels are woven with a blend of aesthetic colors to provide excellent absorbency and a lasting impression.**

- 100% Ringspun Cotton
- Woven on high quality shuttleless looms
- Utilizes double lock stitched hemming to prevent hems from unraveling
- Towel offers a soft, plush feel to the touch
- Offers excellent absorbency and quick dry
- Uniquely preferred for hospitality and health club markets to make a lasting impression
- Affordable pricing
- Packed in bale-packed compressed bulk format which benefits our environment by reducing its carbon footprint.

### GOLDEN JEWEL CABANA STRIPE POOL TOWELS

*100% Ring-Spun Cotton, White w/ Color Stripes*

COLOR	SIZE	WEIGHT	CASE PACK	ITEM NUMBER
Blue 1.75" Cabana Stripes	33" x 66"	15.00 lb.	4 dz.	BSR33X66BLUEST
Yellow 1.75" Cabana Stripes	33" x 66"	15.00 lb.	4 dz.	BSR33X66YELLOWST





# POOL TOWELS COLLECTION

## PREMIUM TERRY



**Premium Terry is our most affordable towel line with a cam border.**

- Premium Terry offers great absorbency, durability and dries quickly.
- It is made from 100% cotton utilizing lock stitched hemming to prevent unraveling.
- The line was made for the institutional hospitality, healthcare and health club markets to make a quality impression, while still priced very affordably.
- Premium Terry is packed in a bale-packed compressed bulk format which benefits our environment by reducing its carbon footprint.

### PREMIUM TERRY POOL TOWELS

*100% Cotton, White w/ Color Stripe*

COLOR	SIZE	WEIGHT	CASE PACK	ITEM NUMBER
Center Blue Stripe	22" x 44"	5.75 lb.	25 dz.	TWTBS22X44-25
Center Blue Stripe	24" x 48"	7.50 lb.	15 dz.	TWTBS24X48







## POOL TOWELS COLLECTION

### GOLDEN CAMELOT



**Golden Camelot is our popular and cost-effective towel line, designed to out-perform standard terry towels, while retaining durability and comfort**

- These towels have a cam border made from 86% cotton/14% polyester blended yarn for reduced shrinkage and longer lifespan.
- The sides are lock stitched hemming to prevent unraveling.
- The line was made for the value driven hospitality, institutional, healthcare and health club markets to make a quality impression, while still priced very affordably.
- Golden Camelot is packed in a bale-packed compressed bulk format which benefits our environment by reducing its carbon footprint.

### GOLDEN CAMELOT POOL TOWELS

*86% Cotton 14% Polyester, White w/ Color Stripe*

COLOR	SIZE	WEIGHT	CASE PACK	ITEM NUMBER
Center Blue Stripe	22" x 44"	5.75 lb.	25 dz.	TWGCBS22X44
Center Blue Stripe	24" x 48"	7.50 lb.	10 dz.	TWGCBS24X48-15DZ
Center Blue Stripe	24" x 50"	10.00 lb.	10 dz.	TWGCBS24X50





## POOL TOWELS COLLECTION

### GOLDEN MILLS SOLID COLOR



**A1 American Golden Mills Solid Colored Pool Towels are designed to offer comfort and resilience with a classic touch of color.**

- These towels have a cam border made from a 86% cotton and 14% polyester blended yarn that reduces shrinkage and provides a longer lifespan
- Sides are lock stitched hemming to prevent unraveling
- The line was made for the value driven hospitality, institutional, healthcare and health club markets to make a quality impression, while still priced very affordably
- Golden Camelot is packed in a bale-packed compressed bulk format which benefits our environment by reducing its carbon footprint



### GOLDEN MILLS SOLID COLOR POOL TOWELS

*86% Cotton 14% Polyester, Cam Border*

COLOR	SIZE	WEIGHT	CASE PACK	ITEM NUMBER
Solid Blue	24" x 50"	10.00 lb.	10 dz.	BSR24X50BL-10
Solid Beige	24" x 50"	10.00 lb.	10 dz.	BSR24X50BE-10



# POOL TOWELS COLLECTION

## BREEZE MULTI STRIPE



**A1 American Breeze Pool Towels are woven with 100% luxurious Ringspun Cotton for a plush, durable & optimal experience.**

- 100% luxurious Ringspun Cotton
- Towels are longer lasting with minimal fade
- Superior absorbency
- Exceptionally plush feel
- Available in: Blue Stripe and Beige Stripe

### BREEZE MULTI STRIPE POOL TOWELS

*100% Ring-Spun Cotton, White w/ Color Stripes*

COLOR	SIZE	WEIGHT	CASE PACK	ITEM NUMBER
Blue / Light Blue Stripes	30" x 60"	11.00 lb.	2 dz.	BSR30X60YBLMS
Brown / Beige Stripes	30" x 60"	11.00 lb.	2 dz.	BSR30X60YBRMS
Blue / Light Blue Stripes	35" x 70"	15.00 lb.	2 dz.	BSR35X70YBLMS
Brown / Beige Stripes	35" x 70"	15.00 lb.	2 dz.	BSR35X70YBRMS





## POOL TOWELS COLLECTION

### GOLDEN JEWEL SOLID WHITE



**A1 American Golden Jewel Pool Towels are woven with a blend of aesthetic colors to provide excellent absorbency and a lasting impression.**

- 100% Ringspun Cotton/Polyester blend
- Woven on high quality shuttleless looms
- Utilizes double and lock stitched hemming to prevent hems from unraveling
- Yarn reduces shrinkage and provides longer life span for towel
- Towel offers a soft, plush feel to the touch
- Offers excellent absorbency and quick dry
- Uniquely preferred for hospitality and health club markets to make a lasting impression
- Affordable pricing
- Packed in bale-packed compressed bulk format which benefits our environment by reducing its carbon footprint

### GOLDEN JEWEL SOLID WHITE POOL TOWELS

*100% Ring-Spun Cotton*

COLOR	SIZE	WEIGHT	CASE PACK	ITEM NUMBER
White, Cam Border	30" x 60"	15.00 lb.	10 dz.	BSR30X60-CAM BORDER
White, No Border	30" x 60"	15.00 lb.	4 dz.	BSR30X60-WH-NO/BORDER





## POOL TOWELS COLLECTION

### GOLDEN TOUCH SOLID COLOR



**A1 American Golden Touch Pool Towels are a best-selling line with a distinct Herringbone & Dobby Border Design.**

- 100% Ringspun cotton
- Herringbone Dobby Border Design
- Soft & delicate feel with excellent absorbency & quick dry solution
- Crafted uniquely for the hospitality & health club markets with affordable pricing
- Superior Absorbency
- Available in: Solid White, Solid Beige/Ecru and Seafoam

### GOLDEN TOUCH SOLID COLOR POOL TOWELS

*100% Ring-Spun Cotton, Herringbone Dobby Border*

COLOR	SIZE	WEIGHT	CASE PACK	ITEM NUMBER
Solid Ecru	30" x 70"	18.00 lb.	3 dz.	BSR30X70-ECRU
Solid Seafoam	30" x 70"	18.00 lb.	3 dz.	BSR30X70-SEAFOM
Solid White	30" x 70"	18.00 lb.	3 dz.	BSR30X70-WHITE





**TOP OF  
BED**



## TOP OF BED COLLECTION



**DECORATIVE TOP  
SHEETS**



**BOXSPRING  
COVERS**



**DUVET COVERS**

CURVE



DECORATIVE TOP SHEET

**A1 American vast inventory of Decorative Top Sheets are both practical and aesthetically pleasing, a popular selection among upscale facilities.**

- Textured fabrics, and solid designs to choose from
- Luxurious styles to classic looks
- Ideal for triple sheeting
- White Oversized Decorative Top Sheets



COLOR	SIZE		CASE PACK	ITEM NUMBER
WHITE	FULL	86" x 100"	12 ea.	SPGTCUWTFULL
WHITE	QUEEN	98" x 100"	12 ea.	SPGTCUWTQUEEN
WHITE	KING	108" x 100"	12 ea.	SPGTCUWTKING

*\*Actual colors may vary from images shown. Please request a sample before ordering.*





CORAL



DECORATIVE TOP SHEET

**A1 American Golden Coral Top Sheet is elegant and versatile, providing a unique touch of style and texture to your bedding design.**

- Color Coded Bottom Hem Thread
- Ideal for triple sheeting
- Easy to care for
- White Extra Long Oversized Decorative Top Sheets
- Textured Coral Pattern
- 1" Top & Bottom Hem



COLOR	SIZE	CASE PACK	ITEM NUMBER
WHITE	TWIN	6 ea.	SPGTCAPWTSTWIN
WHITE	FULL/ QUEEN	6 ea.	SPGTCAPWTSQUEEN
WHITE	KING	6 ea.	SPGTCAPWTSKING

*\*Actual colors may vary from images shown. Please request a sample before ordering.*



BOX SPRING COVER

**This form fitting fabric cover is an elegant solution that snugly fits over and conceals the entire box spring.**

- 100% polyester
- All of County's box spring covers are manufactured with a 4" platform strip

**SPECIFICATIONS - STANDARD BOX SPRING COVERS**

**Top Decking:** Manufactured using 100% polyester

**Platform Strip:** All of our box spring covers are manufactured with a 4" platform strip so the decking does not show if the mattress slips.

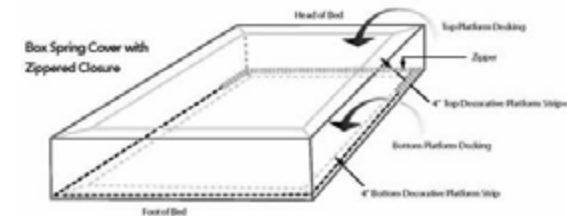
- The 4" wide strip on all three sides is made from the same fabric as the skirt.

**Size:** Width, length and height of box spring + 2" for ease of installation.



**SPECIFICATIONS - CLASSIC-ZIP BOX SPRING COVERS**

**Zippered Closure:** Rather than the fitted sheet style (in which the underside of the mattress is exposed) this is a full-enclosure method wherein the entire box spring is closely surrounded by fabric and, once the box spring is positioned inside, the opening along the bottom seam at the head of the bed can then be zipped closed. This location allows for the zipper to be hidden from guest view. The rest of the construction is the same as the standard style with decking and platform strip. The underside of the cover is made with the same decking material.



**Top and Bottom Decking:** Manufactured using 100% polyester

**Top and Bottom Platform Strips:** All of our Classic-Zip box spring covers are manufactured with a 4" fabric strips in the same fabric as the box spring case and are placed on all four sides on both the upper and underside of the case so the decking does not show if the mattress slips.

**Size:** Width, length and height of box spring + 2" for ease of installation.

Both Standard and Classic-Zip styles are available with the following options:

- Tailored with pleats on sides and corners
- Closed cap corners
- Flat wrapped around all four sides
- Quilted



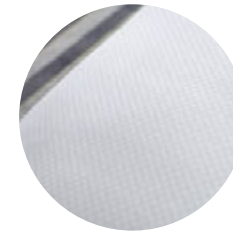
GOLDEN WEAVE

DUVET COVERS



**A1 American Duvet Covers are designed with guest convenience and durability in mind.**

- Very durable 100% Polyester No-Snag Fabric that blends for lasting comfort
- Mini Micro-Check Pattern White Reversible Duvet Cover
- Easy Bottom Opening
- 2 Upper Corner Hand Holds



COLOR	SIZE		CASE PACK	ITEM NUMBER
WHITE	FULL	80" x 96"	12 ea.	SPRBWWCFULL
	QUEEN	90" x 96"	12 ea.	SPRBWWCQUEEN
	KING	105" x 98"	12 ea.	SPRBWWCKING

*\*Actual colors may vary from images shown. Please request a sample before ordering.*



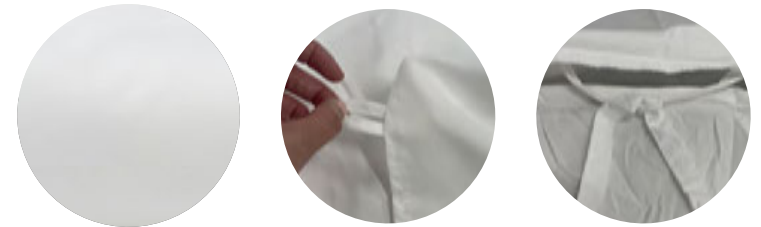
GOLDEN SUITE T-250

DUVET COVERS



**A1 American Duvet Covers are designed with guest convenience and durability in mind.**

- Smooth cotton-rich T-250 60% cotton / 40% polyester fabric blend for both durability and comfort
- Solid White Reversible Duvet Cover
- Easy Bottom Opening
- Loops placed inside corners and the top middle section to hold duvet in place



COLOR	SIZE	SIZE	CASE PACK	ITEM NUMBER
WHITE	FULL	80" x 96"	12 ea.	SPRGSCFULL
	QUEEN	90" x 96"	12 ea.	SPRGSCQUEEN
	KING	105" x 98"	12 ea.	SPRGCKING

*\*Actual colors may vary from images shown. Please request a sample before ordering.*





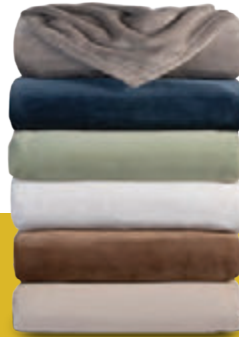
# BLANKETS



**BLANKETS COLLECTION**



**GOLDEN LUX  
BLANKETS**



**GOLDEN GEM  
BLANKETS**



**GOLDEN BLISS  
BLANKETS**



**COLOR THERMAL SPREAD  
BLANKETS**



**WHITE THERMAL  
BLANKETS**



**GOLDEN DIAMOND ECO  
GREEN BLANKETS**



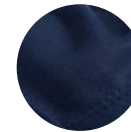
**GOLDEN MEMORY ECO GREEN  
INSERT/COMFORTER**

**GOLDEN LUX**



**A1 American Golden Lux Blankets are a luxurious & convenient selection among guests who are looking for warmth & comfort with a durable finish.**

- 100% Spun Polyester
- Hospitality Tuff Polyester fleece fabric
- Offers the warmth of wool and the comfort of cotton
- Double stitched hem on all sides
- Timelessly comfortable & resilient to use
- Colorfast & anti-piling
- Polyester construction allows for faster drying
- Variety of colors available in: Navy, Light Blue, Jade, Ivory, Tan



Navy



Light Blue



Jade



Ivory



Tan

**GOLDEN LUX BLANKETS**

100% Spun Polyester Fleece

STOCK	SIZE	COLOR	CASE PACK	ITEM NUMBER
TWIN	66" X 90"	Navy Blue	12 ea.	BLKGL66X90NB
	66" X 90"	Light Blue	12 ea.	BLKGL66X90LB
	66" X 90"	Jade	12 ea.	BLKGL66X90J
	66" X 90"	Ivory	12 ea.	BLKGL66X90I
	66" X 90"	Tan	12 ea.	BLKGL66X90T
FULL	80" X 90"	Navy Blue	12 ea.	BLKGL80X90NB
	80" X 90"	Light Blue	12 ea.	BLKGL80X90LB
	80" X 90"	Jade	12 ea.	BLKGL80X90J
	80" X 90"	Ivory	12 ea.	BLKGL80X90I
	80" X 90"	Tan	12 ea.	BLKGL80X90T
QUEEN	90" X 90"	Navy Blue	12 ea.	BLKGL90X90NB
	90" X 90"	Light Blue	12 ea.	BLKGL90X90LB
	90" X 90"	Jade	12 ea.	BLKGL90X90J
	90" X 90"	Ivory	12 ea.	BLKGL90X90I
	90" X 90"	Tan	12 ea.	BLKGL90X90T
KING	108" X 90"	Navy Blue	12 ea.	BLKGL108X90NB
	108" X 90"	Light Blue	12 ea.	BLKGL108X90LB
	108" X 90"	Jade	12 ea.	BLKGL108X90J
	108" X 90"	Ivory	12 ea.	BLKGL108X90I
	108" X 90"	Tan	12 ea.	BLKGL108X90T



**GOLDEN GEM**



**A1 American Golden Gem Blankets line is a top selection among guests who are looking for an all-season convenience and optimal comfort.**

- With 100% Brushed Fleece Polyester
- Blankets are manufactured for all season performance
- Very comfortable & plush
- Hypoallergenic
- Lasts twice as long as a standard thermal blanket
- Colorfast & preshrunk to hold its shape
- Easy to care for
- Polyester construction allows for faster drying
- Available in: Platinum, Marine Blue, Green Tea, White, Fawn, & Natural



**GOLDEN GEM BLANKETS**

100% Brushed Polyester Fleece

STOCK	SIZE	COLOR	CASE PACK	ITEM NUMBER
TWIN	66" X 90"	Platinum	6 ea.	BLKGG66X90PLAT
	66" X 90"	Marine Blue	6 ea.	BLKGG66X90MB
	66" X 90"	Green Tea	6 ea.	BLKGG66X90GT
	66" X 90"	White	6 ea.	BLKGG66X90WHITE
	66" X 90"	Fawn	6 ea.	BLKGG66X90FAWN
	66" X 90"	Natural	6 ea.	BLKGG66X90NAT
FULL	80" X 90"	Platinum	6 ea.	BLKGG80X90PLAT
	80" X 90"	Marine Blue	6 ea.	BLKGG80X90MB
	80" X 90"	Green Tea	6 ea.	BLKGG80X90GT
	80" X 90"	White	6 ea.	BLKGG80X90WHITE
	80" X 90"	Fawn	6 ea.	BLKGG80X90FAWN
	80" X 90"	Natural	6 ea.	BLKGG80X90NAT
QUEEN	90" X 90"	Platinum	5 ea.	BLKGG90X90PLAT
	90" X 90"	Marine Blue	5 ea.	BLKGG90X90MB
	90" X 90"	Green Tea	5 ea.	BLKGG90X90GT
	90" X 90"	White	5 ea.	BLKGG90X90WHITE
	90" X 90"	Fawn	5 ea.	BLKGG90X90FAWN
	90" X 90"	Natural	5 ea.	BLKGG90X90NAT
KING	102" X 90"	Platinum	5 ea.	BLKGG102X90PLAT
	102" X 90"	Marine Blue	5 ea.	BLKGG102X90MB
	102" X 90"	Green Tea	5 ea.	BLKGG102X90GT
	102" X 90"	White	5 ea.	BLKGG102X90WHITE
	102" X 90"	Fawn	5 ea.	BLKGG102X90FAWN
	102" X 90"	Natural	5 ea.	BLKGG102X90NAT





**GOLDEN BLISS**



**A1 American Golden Bliss blanket is traditional polyester fleece option that provides your guests classic softness & comfort and lightweight warmth.**

- 100% Spun Polyester
- Polyester construction allows for faster drying
- Available in white only
- Plush lightweight warmth
- Durable & long lasting
- Pill-resistant
- May be institutionally laundered or regular machine washed

**GOLDEN BLISS BLANKET**

*100% Spun Polyester Fleece Blankets*

STOCK	SIZE	COLOR	CASE PACK	ITEM NUMBER
TWIN	66" X 90"	White	12 ea.	BLKGM66X90W
FULL/QUEEN	90" X 90"	White	12 ea.	BLKGM90X90W
KING	108" X 90"	White	12 ea.	BLKGM108X90W

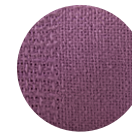


**THERMAL SPREAD**

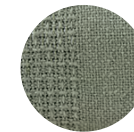


**All American Color Thermal Spread Blankets are ideal for guests looking for that hospitality look and feel.**

- 100% Ringspun Cotton
- Tightly woven for capital durability
- Snag free
- Offers a unique checked square pattern design
- Available in: Raspberry, Celery Green, Champagne, Blue.



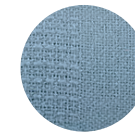
Raspberry



Green



Champagne



Blue

**THERMAL SPREAD BLANKETS**

*3.5 lb. Solid Color, Checked Pattern, 100% Spun Cotton*

STOCK	SIZE	COLOR	CASE PACK	ITEM NUMBER
TWIN XL	74" X 108"	Raspberry	20 ea.	BLK74X108THERM-RASP
	74" X 108"	Green	20 ea.	BLK74X108THERM-GRN
	74" X 108"	Champagne	20 ea.	BLK74X108THERM-CHAM
	74" X 108"	Blue	20 ea.	BLK74X108THERM-BLUE



WHITE THERMAL



**A1 American Thermal Blankets offer guests a pure cotton-rich experience with a durable finish - White**

- 100% Cotton
- Offers open & snag free white design
- Offers durability & comfort

**WHITE THERMAL BLANKETS**

*100% Spun Cotton*

STOCK	SIZE	COLOR	CASE PACK	ITEM NUMBER
TWIN - LENO WEAVE	66" X 90"	2.10 lb.	20 ea.	BLK66X90THERM-2.1#
TWIN - SNAG FREE	66" X 90"	2.50 lb.	20 ea.	BLK66X90THERM
TWIN - NO SNAG BLOCK PATTERN	66" X 90"	2.50 lb.	20 ea.	BLK66X90THERM-2.5#
TWIN - NO SNAG BLOCK PATTERN	66" X 90"	3.00 lb.	50 ea.	BLK66X90THERM-3#





**GOLDEN DIAMOND ECO GREEN**



**A1 American Golden Diamond Eco Green Blankets are a popular choice for your guests to stay warm, comfortable & environmentally friendly.**

- ^ Ideal for triple sheeting applications
- 100% Recycled Microfiber fill
- Microfiber Cover
- Eco-friendly
- Machine Wash & dry with ease



White



Beige

**GOLDEN DIAMOND ECO GREEN BLANKETS**

*10" Diamond Pattern, 100% Recycled Micro Polyester Fill*

STOCK	SIZE	COLOR	CASE PACK	ITEM NUMBER
TWIN	66" X 90"	White	10 ea.	BLKGDEG66X90
	66" X 90"	Beige	10 ea.	BLKGDEGB66X90
FULL	82" X 90"	White	10 ea.	BLKGDEG82X90
	82" X 90"	Beige	10 ea.	BLKGDEGB82X90
QUEEN	90" X 90"	White	9 ea.	BLKGDEG90X90
	90" X 90"	Beige	9 ea.	BLKGDEGB90X90
KING	108" X 90"	White	8 ea.	BLKGDEG108X90
	108" X 90"	Beige	8 ea.	BLKGDEGB108X90



**GOLDEN MEMORY ECO GREEN DOWN ALTERNATIVE INSERT/COMFORTER**



**A1 American Golden Memory Comforter is an Eco-Friendly and Deluxe selection for guests who opt for product durability without compromising on the feel.**

- 100% Eco-friendly Deluxe Recycled Polyester fill
- Layered Micro-Fiber
- Stain-resistant fabric
- Microfiber Ticking/Cover
- Wash and Compressed Tested
- Machine Wash & dry with ease

**GOLDEN MEMORY ECO GREEN DOWN ALTERNATIVE INSERT/COMFORTER**

*12" Box Quilted Pattern, 100% Recycled Micro Polyester Fill*

STOCK	SIZE	FILL	CASE PACK	ITEM NUMBER
TWIN (STD)	66" X 88"	33 oz.	6 ea.	SPC1STD68X88(6/EA)
(HW)	66" X 88"	40 oz.	6 ea.	SPC1HW68X88(6/EA)
FULL (STD)	80" X 96"	38 oz.	6 ea.	SPC1STD80X96(6/EA)
(HW)	80" X 96"	46 oz.	6 ea.	SPC1HW80X96(6/EA)
QUEEN (STD)	90" X 96"	42 oz.	6 ea.	SPC1STD90X96(6/EA)
(HW)	90" X 96"	51 oz.	6 ea.	SPC1HW90X96(6/EA)
KING (STD)	105" X 98"	48 oz.	6 ea.	SPC1STDA105X98(6/EA)
(HW)	105" X 98"	58 oz.	6 ea.	SPC1HWA105X98(6/EA)





**PILLOWS**



**PILLOWS COLLECTION**

**VALUE**



**GOLDEN CHOICE ECO  
GREEN PILLOWS**  
FIRMNESS: MEDIUM

**DELUXE**



**GOLDEN DREAM  
PILLOWS**  
FIRMNESS: MEDIUM

**PREMIUM**



**GOLDEN MEMORY  
GEL PILLOWS**  
FIRMNESS: MEDIUM

**SUPERIOR**



**SOFFICE GEL  
PILLOW**  
FIRMNESS: MEDIUM

**SUPERIOR**



**DECADENCE CHAMBER  
PILLOW**  
FIRMNESS: MEDIUM BALANCED



**GOLDEN CHOICE ECO GREEN**



**A1 American Golden Choice Pillows line is a trending guest selection for its combination of softness & lasting comfort.**

- 50/50% Cotton/Poly blend
- Supraloft Premium 100% Recycled PET Polyester Fiber fill
- Knife Edge 3-sides
- Hypoallergenic
- Eco-friendly
- Machine washable



**GOLDEN CHOICE ECO GREEN PILLOWS**

*T-200 50% Cotton / 50% Poly Cover, 100% Recycled PET Polyester Fiber Fill, Hypoallergenic*

STOCK	SIZE	FILL	CASE PACK	ITEM NUMBER
STANDARD	20" X 26"	22 oz.	12 ea.	PILGCHOICE
QUEEN	20" X 30"	27 oz.	10 ea.	PILGCHOICE-Q
KING	20" X 36"	33 oz.	8 ea.	PILGCHOICE-K







## PILLOWS COLLECTION

### GOLDEN DREAM ECO GREEN



**A1 American Golden Dream Pillows have a lush feel & are fully dedicated to delivering your guests a pinnacle night's sleep.**

- 50/50% Poly/Cotton blend
- Premium 100% Recycled PET Polyester Down-Like fill
- Hypoallergenic
- Knife Edge 3-sides
- Soft & durable
- Machine Washable



### GOLDEN DREAM ECO GREEN PILLOWS

*T-200 50% Cotton / 50% Poly Cover, 100% Recycled PET Poly Down-Like Fill, Hypoallergenic*

STOCK	SIZE	FILL	CASE PACK	ITEM NUMBER
STANDARD	20" X 26"	22 oz.	12 ea.	PILGDREAM
QUEEN	20" X 30"	27 oz.	10 ea.	PILGDREAM-Q
KING	20" X 36"	33 oz.	8 ea.	PILGDREAM-K





## PILLOWS COLLECTION

### GOLDEN MEMORY GEL

**A1 American Golden Memory Gel pillows are a premium selection for unparalleled comfort & lasting convenience.**



- 100% Cotton Cover
- Magic Gel™ 2.0 Premium Polyester fiber fill
- Includes Double Needle stitching
- Comes with 4-sides cording
- Has durable & shapeable technology
- Hypoallergenic
- Machine Washable

### GOLDEN MEMORY GEL PILLOWS

*T-233 100% Cotton Cover, Magic Gel Premium Polyester Fill, Hypoallergenic*

STOCK	SIZE	FILL	CASE PACK	ITEM NUMBER
STANDARD	20" X 26"	30 oz.	12 ea.	PILGMEMORYGEL
QUEEN	20" X 30"	34 oz.	10 ea.	PILGMEMORYGEL-Q
KING	20" X 36"	40 oz.	8 ea.	PILGMEMORYGEL-K





## PILLOWS COLLECTION

### SOFFICE GEL PILLOW



**A1 American Soffice Gel Pillows are an incredibly plush and fluffy guest-preferred alternative to pair with your bedding collection. Your guests will be delighted at the quality of their sleep.**

- Woven with a 100% Cotton Plain Weave, 233 thread count
- Filled with blended gel fibers for balanced support and softness
- Double stitch self-cording
- Unique blend of 50% 3D Fibers & 50% 0.7D Fibers
- Ideal for all sleep positions
- Machine washable and dryable
- Easy care and maintenance

### SOFFICE GEL PILLOWS

*T-233 100% Cotton Plain Weave, Hypoallergenic*

ITEM #	DESC	UNIT
PILSOFFICE	SOFFICE GEL STD PILLOW (12)	EA
PILSOFFICE-Q	SOFFICE GEL QUEEN PILLOW (12)	EA
PILSOFFICE-K	SOFFICE GEL KING PILLOW (12)	EA





**DECADENCE CHAMBER PILLOW**



**A1 American Decadence Chamber Pillows are a light-weight and feathery bedding favorite for guests to drift into a warm and comfortable night’s rest, while decked in top hotel quality elegance.**

- Chamber style medium support pillow
- Contours to neck and shoulders to provide better and more balanced sleeping support
- Woven with a 100% Cotton Plain Weave
- Soft gel fiber surround natural feather core
- Always FLUFF when removing from carton (see fluffing instructions)
- Re-fluff the pillow for better support
- Includes a 100% Polyester inner lining for textured design
- Inner Chamber of 99% Duck Feather
- Natural or non-synthetic majority filled feathered pillow
- Feathered fill is longer lasting than synthetic filled comparable pillows
- Feathers fill entire pillow shell to give guests a more balanced sleeping experience
- Double stitch self-cording
- Chamber-style with an outer chamber of 3D cluster Polyester fibers
- Machine washable - feathers do not “clump” together
- Easy care and maintenance

**DECADENCE CHAMBER PILLOW**

*T-233 100% Cotton Plain Weave, Hypoallergenic*

ITEM #	DESC	UNIT
PILDECADENCE	GOLDEN DECADENCE CHAMBER STD PILLOW (12)	EA
PILDECADENCE-Q	GOLDEN DECADENCE CHAMBER QUEEN PILLOW (12)	EA
PILDECADENCE-K	GOLDEN DECADENCE CHAMBER KING PILLOW (12)	EA





**PILLOW &  
MATTRESS  
PROTECTION**



## PILLOW & MATTRESS PROTECTION COLLECTION

### MATTRESS PROTECTION



**GOLDEN SLUMBER QUILTED  
FITTED MATTRESS PADS**

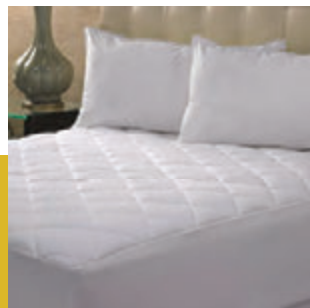


**GOLDEN DEFENDER WATERPROOF  
QUILTED FITTED MATTRESS PADS**



**GOLDEN HEALTH MATTRESS AND  
BOX SPRING ENCASEMENTS**

### MATTRESS TOPPER



**DECADENCE  
MATTRESS TOPPER**

### PILLOW PROTECTOR



**GOLDEN MILLS T-180  
PILLOW PROTECTOR**

**GOLDEN SLUMBER QUILTED FITTED MATTRESS PADS**



**A1 American's Golden Slumber Mattress Pads are a durable and reliable choice for every facility.**

- Quilted & fitted mattress pad look with Polyester fill
- Machine washable & dryer safe
- Durably stitched
- Fully elastic all around

**GOLDEN SLUMBER QUILTED FITTED MATTRESS PADS**

*45% Polyester/ 55% Cotton Top and Bottom, Fitted Sides*

STOCK	SIZE	FILL	CASE PACK	ITEM NUMBER
TWIN	39" X 75" X 12"	5 oz	12 ea.	MPQ39X75
	39" X 75" X 14"	10 oz	12 ea.	MPQD39X75
TWIN XL	39" X 80" X 12"	5 oz	12 ea.	MPQ39X80
	39" X 80" X 14"	10 oz	12 ea.	MPQD39X80
FULL	54" X 75" X 12"	5 oz	12 ea.	MPQ54X75
	54" X 75" X 14"	10 oz	12 ea.	MPQD54X75
FULL XL	54" X 80" X 12"	5 oz	12 ea.	MPQ54X80
	54" X 80" X 14"	5 oz	12 ea.	MPQ54X80X14
	54" X 80" X 14"	10 oz	6 ea.	MPQD54X80
QUEEN	60" X 80" X 12"	5 oz	6 ea.	MPQ60X80
	60" X 80" X 14"	5 oz	6 ea.	MPQ60X80X14
	60" X 80" X 14"	10 oz	6 ea.	MPQD60X80
CAL KING	72" X 84" X 12"	5 oz	6 ea.	MPQ72X84
	72" X 84" X 14"	5 oz	6 ea.	MPQ72X84X14
	72" X 84" X 14"	10 oz	6 ea.	MPQD72X84
DUAL KING	78" X 80" X 12"	5 oz	6 ea.	MPQ78X80
	78" X 80" X 14"	5 oz	6 ea.	MPQ78X80X14
	78" X 80" X 14"	10 oz	6 ea.	MPQD78X80



**GOLDEN DEFENDER WATERPROOF QUILTED FITTED MATTRESS PADS**



**A1 American's Golden Defender Waterproof Mattress Pads are withstanding to stains, spillage and time while providing ultimate support.**

- 55/45% Quilted Cotton/Polyester Top
- Polyester fill
- Machine washable & dryer safe
- Waterproof
- Fully elastic all around

**GOLDEN DEFENDER WATERPROOF QUILTED FITTED MATTRESS PADS**

*45% Polyester/ 55% Cotton Top, Polyurethane Bottom, Fitted Sides*

STOCK	SIZE	FILL	CASE PACK	ITEM NUMBER
TWIN	39" X 75" X 12"	5 oz	12 ea.	MPQW39X75X12
	39" X 75" X 15"	8 oz	12 ea.	MPQWD39X75X15
TWIN XL	39" X 80" X 12"	5 oz	12 ea.	MPQW39X80X12
	39" X 80" X 15"	8 oz	12 ea.	MPQWD39X80X15
FULL	54" X 75" X 12"	5 oz	12 ea.	MPQW54X75X12
	54" X 75" X 15"	8 oz	12 ea.	MPQWD54X75X15
FULL XL	54" X 80" X 12"	5 oz	12 ea.	MPQW54X80X12
	54" X 80" X 15"	8 oz	6 ea.	MPQWD54X80X15
QUEEN	60" X 80" X 12"	5 oz	6 ea.	MPQW60X80X12
	60" X 80" X 14"	5 oz	6 ea.	MPQW60X80X14
	60" X 80" X 15"	8 oz	6 ea.	MPQWD60X80X15
CAL KING	72" X 84" X 12"	5 oz	6 ea.	MPQW72X84X12
	72" X 84" X 15"	8 oz	6 ea.	MPQWD72X84X15
DUAL KING	78" X 80" X 12"	5 oz	6 ea.	MPQW78X80X12
	78" X 80" X 14"	5 oz	6 ea.	MPQW78X80X14
	78" X 80" X 15"	8 oz	6 ea.	MPQWD78X80X15





**GOLDEN HEALTH MATTRESS & BOX SPRING ENCASEMENTS**



**A1 American's Golden Health Mattress and Box Spring Encasements ensure ultimate guest and property protection.**

- Optimal dust mite protection & bed bug resistance
- Secure Micro zippered with double Velcro closure
- Waterproof top with Microfiber bottom

**GOLDEN HEALTH MATTRESS ENCASEMENTS**

*Bed Bug Proof, Micro Zippered w/ Double Velcro Closure, Waterproof Top, Microfiber Bottom, Stretchable*

STOCK	SIZE	DEPTH	CASE PACK	ITEM NUMBER
TWIN	39" X 75"	9"-14"	12 ea.	MPUME39X75X12
TWIN XL	39" X 80"	9"-14"	12 ea.	MPUME39X80X12
FULL	54" X 75"	9"-14"	12 ea.	MPUME54X75X12
FULL XL	54" X 80"	9"-14"	12 ea.	MPUME54X80X12
QUEEN	60" X 80"	9"-14"	12 ea.	MPUME60X80X12
CAL KING	73" X 84"	9"-14"	12 ea.	MPUME73X84X12
DUAL KING	78" X 80"	9"-14"	12 ea.	MPUME78X80X12

**GOLDEN HEALTH BOX SPRING ENCASEMENTS**

*Bed Bug Proof, Micro Zippered w/ Double Velcro Closure, Non-Woven*

STOCK	SIZE	DEPTH	CASE PACK	ITEM NUMBER
TWIN	40" X 76"	9"-12"	12 ea.	MPUBS40X76X10
TWIN XL	40" X 81"	9"-12"	12 ea.	MPUBS40X81X10
FULL	55" X 76"	9"-12"	12 ea.	MPUBS55X76X10
FULL XL	55" X 81"	9"-12"	12 ea.	MPUBS55X81X10
QUEEN	61" X 81"	9"-12"	12 ea.	MPUBS61X81X10
CAL KING	37" X 85" (2)	9"-12"	12 ea.	MPUBS73X85XX2
DUAL KING	40" X 81" (2)	9"-12"	12 ea.	MPUBS79X81XX2



MATTRESS TOPPER



**Our Decadence Mattress Topper by Golden Mills offers a truly luxurious sleep experience.**

- T210 thread count blended fabric on the top and bottom
- 28 oz. polyfill
- Reversible 8" quilt-diamond design with luxury piping around edges
- Stretchable fitted skirt that can fit mattresses up to 15"
- Manufactured in an Oeko-Tex certified facility, energy efficient utilizing renewable energy and water treatment practices
- Packaged in our FitRite compressed packaging to reduce carbon footprint
- LoveDry Program: Every container shipment, we give back to the surrounding communities where our production is occurring

MATTRESS TOPPER

ITEM	CASE PACK	ITEM NUMBER
MATTRESS TOPPER, TWIN XL 39X80, FITTED SKIRT, WHITE	4 each	MT39X80
MATTRESS TOPPER, FULL XL/DOUBLE XL 54x80, FITTED SKIRT, WHITE	4 each	MT54X80
MATTRESS TOPPER, QUEEN 60X80, FITTED SKIRT, WHITE	4 each	MT60X80
MATTRESS TOPPER, KING XL 78x80. FITTED SKIRT. WHITE	4 each	MT78X80
MATTRESS TOPPER. HOTEL KING 72x80. FITTED SKIRT. WHITE CASE	4 each	MT72X80





**PILLOWS & MATTRESS PROTECTION COLLECTION**

**GOLDEN MILLS PILLOW PROTECTORS**



**All American's Golden Mills Pillow Protectors are designed for ultimate ease & comfort**

- 60/40% Cotton/Poly Blend
- Includes a zipper or envelope closure for easy removal
- Soft & light feel
- Machine Washable

**GOLDEN MILLS T-180 PILLOW PROTECTORS**

*50% Cotton / 50% Polyester Blend, Zipper or Envelope-Style Closure*

STOCK	SIZE	STYLE	CASE PACK	ITEM NUMBER
STANDARD	20" X 26"	Zipper	6 dz.	SHGMPPROT
	20" X 26"	Envelope-Style	6 dz.	SHGMPPROTENV
QUEEN	20" X 30"	Zipper	6 dz.	SHGMPPROTQ
	20" X 30"	Envelope-Style	6 dz.	SHGMPPROTENVQ
KING	20" X 36"	Zipper	6 dz.	SHGMPPROTK
	20" X 36"	Envelope-Style	6 dz.	SHGMPPROTKENVK





# SHOWER CURTAINS



## SHOWER CURTAINS COLLECTION



**SUPER SUEDE**



**HOTEL NYLON**



**DIAMOND DOBBY**



**VINYL LINER**



**ACCESSORIES**



## SHOWER CURTAINS COLLECTION

### SUPER SUEDE

**A1 American Super Suede Shower Curtains are heavy weight and Anti-Bacterial commercial shower curtains that provide ultimate privacy and convenience for guests and are ideal for use in every hotel, motel, resort or facility bathroom.**

- Heavy weight 10 Gauge Vinyl Shower Curtain
- Anti-Bacterial
- No-tear Nylon Mesh in Header
- Flame Retardant
- Available in hook or easy hook (without hooks) option
- Easyhook available in some sizes
- Fully Mildew Resistant: eliminates toxic odors
- Easy to use and care for: simple to wash and reuse
- No Side Hems to collect runoff
- Machine Washable
- Available in a full range of colors
- 70 inch x 72 inch

### SUPER SUEDE

*100% Vinyl Shower Curtains, Mildew Resistant, Super Soft, Available in Beige and White*

COLOR	SIZE	CASE PACK	ITEM NUMBER
BEIGE	3'x6'	24	SCUSUPBE3X6
	6'x6'	24	SCUSUPBE6X6
WHITE	3'x6'	24	SCUSUPWH3X6
	6'x6'	24	SCUSUPWH3X6
WHITE W/ EASYHOOK	6'x6'	24	SCUSUPWH6X6EZHK
	72'x74'	24	SCUSUPWH72X74EZHK

*Custom Sizes Available - Call for details*





## SHOWER CURTAINS COLLECTION

### HOTEL NYLON

**A1 American Hotel Nylon Shower Curtains are a quick drying, stain resistant and very durable alternative to use in your hotel bathroom.**

- Fast drying, to save guests time and efficiency
- Water-resistant: the fabric of the curtains allows for water drops to stay on the surface where they are fast to dry
- Very absorbent
- Top Hem
- Very durable for long time use and longer-lasting than polyester
- Buckram Reinforced; with top hem
- Easy to use and care for: simple to wash and reuse
- No chemical odors released from Nylon material
- Machine Washable
- Preferred material choice for commercial shower curtains
- Available in White or Beige colors

### HOTEL NYLON

*100% Polyester Nylon Shower Curtains, Mildew Resistant, Super Soft, Available in Beige and White*

COLOR	SIZE	CASE PACK	ITEM NUMBER
BEIGE	6'x6'	24	SCUNYLBE6X6
WHITE	6'x6'	24	SCUNYLWH6X6

*Custom Sizes Available – Call for details*



DIAMOND DOBBY

A1 American Diamond Dobby Shower Curtains are an aesthetically pleasing alternative for your hotel rooms, bringing a 100% Polyester touch with mildew resistant material to keep your guests' safety needs and conveniences met.

- Aesthetically pleasing texture of fabric to enhance all hotel bathrooms
- 100% Polyester and Mildew resistant material
- Teflon coated for water resistance and stain repellency
- Top Header
- Easy to use and care for: simple to wash and reuse
- Sewn button home eyelets with secure top
- Machine Washable
- Available in White or Beige Colors

DIAMOND DOBBY

100% Polyester Nylon Shower Curtains with Diamond Dobby Pattern, Mildew Resistant, Super Soft, Available in Beige and White

COLOR	SIZE	CASE PACK	ITEM NUMBER
BEIGE	6'x6'	24	SCUODOBBE6X6
WHITE	6'x6'	24	SCUODOBWH6X6

Custom Sizes Available - Call for details





# SHOWER CURTAINS COLLECTION

## VINYL LINER



**A1 American Shower Curtain Liners are a long lasting and protective alternative to preserve your shower curtains year round.**

- 100% Lightweight Vinyl
- Mildew resistant
- Very durable for lasting protection
- Rust-proof metal grommets
- Good quality for all hotels
- 70 inch x 72 inch

### VINYL LINER

*100% Vinyl Shower Curtain Liners, Magnetized, Mildew Resistant, Super Soft, Available in Beige, White and Clear*

COLOR	SIZE	CASE PACK	ITEM NUMBER
BEIGE	6'x6'	24	SCULINERTWBEIGE
WHITE	3'x6'	24	SCULINERTWWHITE
CLEAR	6'x6'	24	SCULINERTWCLEAR

*Custom Sizes Available - Call for details*



# SHOWER CURTAINS COLLECTION

## SHOWER ACCESSORIES

**A1 American offers a full line of tub and shower accessories, to help complete your bathroom update.**

- Tub Safety Mats - White
- Curved Shower Curtain Rods
- Shower Curtain Rings, available in White, Beige, and Clear



### SHOWER ACCESSORIES

DESCRIPTION	STYLE	CASE PACK	ITEM NUMBER
<b>TUB MATS</b>			
RUBBER TUB MAT	14"x22"	24	SCUBMRUB14X22
<b>SHOWER RODS</b>			
CURVED SHOWER ROD W/BACKET, CHROME	5'	10	SCUSHRRD
<b>SHOWER CURTAIN HOOKS</b>			
ROUND HOOKS BEIGE	Set of 12	12	SCUSHOOKSBEIGE
ROUND HOOKS WHITE	Set of 12	12	SCUSHOOKSWHITE
ROUND HOOKS CLEAR	Set of 12	12	SCUSHOOKSCLEAR

*Custom Sizes Available - Call for details*



# SHOWER CURTAINS COLLECTION

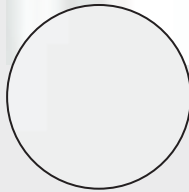
## SHOWER CURTAINS



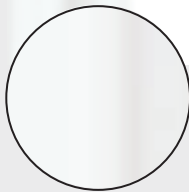
CHECKERED



HERRINGBONE



PLAINWEAVE



VINYL



WAFFLE

**A1 American Shower Curtain Liners are a long lasting and protective alternative to preserve your shower curtains year round.**

- Hook free & hooked
- Features ultrasonic bottom cut to prevent mildew buildup
- Corner magnets
- Polyester material
- Poly-voile translucent window

Shower Curtain Or Liner Description	Hook Free	Window	Snap Liner	Item Upc #	Case Pack	Cube (ft <sup>3</sup> )	Product Dimensions (in)	Case Dimensions (in)	Item Weight (lb)	Case Weight (lb)	CBI #
Plainweave	Y	Y	N	038861700661	12	1.136	71W x 74H	11.81D x 10.83W x 15.35H	0.95	11.88	ZWHIT-5722-1360
Plainweave	Y	Y	N	038861702085	12	1.156	71W x 77H	11.81D x 11.02W x 15.35H	0.99	11.95	ZWHIT-5722-13601
Plainweave	Y	Y	Y	38861702092	12	1.631	71W x 74H	21.65D x 11.81W x 11.02H	1.57	18.74	ZWHIT-5722-13602
Plainweave	Y	Y	Y	038861702108	12	1.74	71W x 77H	20.87D x 11.81W x 12.2H	1.61	19.32	ZWHIT-5722-13603
Full Panel Plainweave	Y	N	N	038861702115	12	1.356	71W x 74H	12.6D x 11.81W x 15.75H	0.93	11.03	ZWHIT-5722-13604
Full Panel Plainweave	Y	N	N	038861702122	12	1.186	71W x 77H	12.01D x 10.83W x 15.75H	0.99	11.91	ZWHIT-5722-13605
Full Panel Plainweave	Y	N	N	038861702139	12	1.214	71W x 80H	12.4D x 11.02W x 15.35H	1.01	12.13	ZWHIT-5722-13606
Checked	Y	N	N	038861702146	12	0.919	71W x 74H	11.81D x 11.02W x 12.2H	1.12	13.45	ZWHIT-5722-13607
Checked	Y	N	N	038861702153	12	0.901	71W x 77H	12.4D x 10.63W x 11.81H	1.17	14.110	ZWHIT-5722-13608
Checked	Y	N	N	038861702167	12	0.459	42W x 74H	11.81D x 11.02W x 12.2H	0.59	14.23	ZWHIT-5722-13609
Checked	Y	Y	Y	038861702177	12	1.292	71W x 77H	20.87D x 11.81W x 9.06H	1.76	21.17	ZWHIT-5722-13610
Herringbone	Y	Y	Y	038861702184	12	1.886	71W x 77H	20.87D x 12.8W x 12.2H	2.07	8.82	ZWHIT-5722-13611
Waffle	Y	Y	Y	038861702191	12	1.746	71W x 77H	21.65D x 12.2W x 11.42H	1.94	23.15	ZWHIT-5722-13612
10 Gauge Vinyl	Y	N	N	038861702207	12	0.931	71W x 74H	15.51D x 11.5W x 9.02H	2.6	31.97	ZWHIT-5722-13613
10 Gauge Vinyl	Y	N	N	038861702214	12	0.931	71W x 77H	15.51D x 11.5W x 9.02H	2.6	33.3	ZWHIT-5722-13614
10 Gauge Vinyl	Y	N	N	038861702221	12	0.464	42W x 74H	15.51D x 11.51W x 9.02H	1.5	19.37	ZWHIT-5722-13615
Replacement Liners	Y	N	Y	038861702276	12	0.452	70W x 54H	11.22D x 7.68W x 9.06H	0.55	6.62	ZWHIT-5722-13616
Replacement Liners	Y	N	Y	038861702283	12	0.452	70W x 57H	11.22D x 7.68W x 9.06H	0.62	7.5	ZWHIT-5722-13617
6 Gauge Vinyl	N	N	N	03886196049	12	0.569	72W x 72H	15.51D x 11.5W x 5.51H	1.3	16.32	ZWHIT-5722-13618
10 Gauge Vinyl	N	N	N	038861702238	12	0.671	72W x 72H	15.51D x 11.5W x 6.5H	2.25	27.78	ZWHIT-5722-13619
10 Gauge Vinyl	N	N	N	038861702245	12	0.333	36W x 72H	12.01D x 7.99W x 6H	1.12	14.33	ZWHIT-5722-13620
Plainweave	N	N	N	038861696056	12	0.886	72W x 72H	11.81D x 10.63W x 12.2H	0.73	8.82	ZWHIT-5722-13621





**AMENITIES  
AND  
PERSONAL  
CARE**



## AMENITIES AND PERSONAL CARE COLLECTION



**DISPENSERS**



**SINGLE USE BOTTLES**



**BULK LIQUIDS**



**ACCESSORIES**



### DISPENSERS

#### **Bulk Liquids Refill and personal care dispenser products**

A1 American provides a broad array of hotel-quality bulk liquid amenities and personal care dispenser products to make a signature point of prioritizing the convenience, safety and comfort of your guests' stay. A1 American's vast inventory of personal care dispensers include a variety of tamper-proof and aesthetically pleasing alternatives for all budgets and are sure to be happily welcomed by your guests!

---

#### **WHY DISPENSERS?**

##### **Environmental Impact**

Millions of plastic bottles hit our landfills and oceans each year. Do your part today by transitioning away from single-use amenities to dispensers.

##### **Design & Construction**

Our collection of dispensers offers unique tamper-proof features with aesthetically appealing designs and functionality making it a perfect fit for any lodging establishment

##### **Economic Impact**

Transitioning away from single-use amenities to dispensers will yield a long-lasting investment and generate cost savings for your establishment positively impacting your bottom line.

##### **Legislation - CA AB 1162**

Effective Jan 1, 2023, this California state-wide ban prohibits lodging establishments from providing small plastic bottles to guests and makes the lodging establishment civilly liable upon violation. Get ahead of this upcoming ban and contact an A1 American Sales team member to discuss your dispenser and bulk amenity needs.



## DISPENSERS



# AMENITIES AND PERSONAL CARE COLLECTION

## BULK LIQUIDS & SINGLE USE BOTTLES





## ACCESSORIES





**ROOM  
SUPPLIES**



## OUR OS&E PRODUCTS AND SUPPLY PARTNERS



**ROOM SUPPLIES**

**We also carry these other room items.**

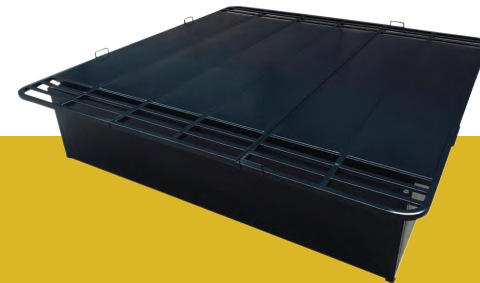
Contact Us



**COFFEE AND  
FOODSERVICE**

**ELECTRONICS AND  
APPLIANCES**

**OS&E ROOM  
ITEMS**



**HOUSEKEEPING**

**FF&E**

**ROOM SUPPLIES**

**ROOM ACCESSORIES - ELECTRONICS**



**SINGLE SERVE  
COFFEE MAKER**



**CLOCK RADIO**



**CLOCK RADIO  
W/ 0.9" DISPLAY**



**HAIR DRYER**



**HAIR DRYER  
1600 WATTS**

**ROOM  
ACCESSORIES - CLOSET**



**PILLOW / BLANKET  
BAG**



**T-LEG IRONING  
BOARD**

**BATHROOM/AMENITIES**



**PAPER PRODUCTS**



**HOSPITALITY IRON**



**NONSTICK IRON  
WITH RETRACTABLE  
CORD**

COFFEE AND FOODSERVICE



**Coffee Makers  
K-cups and Pods  
Cups  
Condiments**

**Plates and Bowls  
Plastic Utensils  
Clamshells  
Napkins**



### LIQUID SOAP

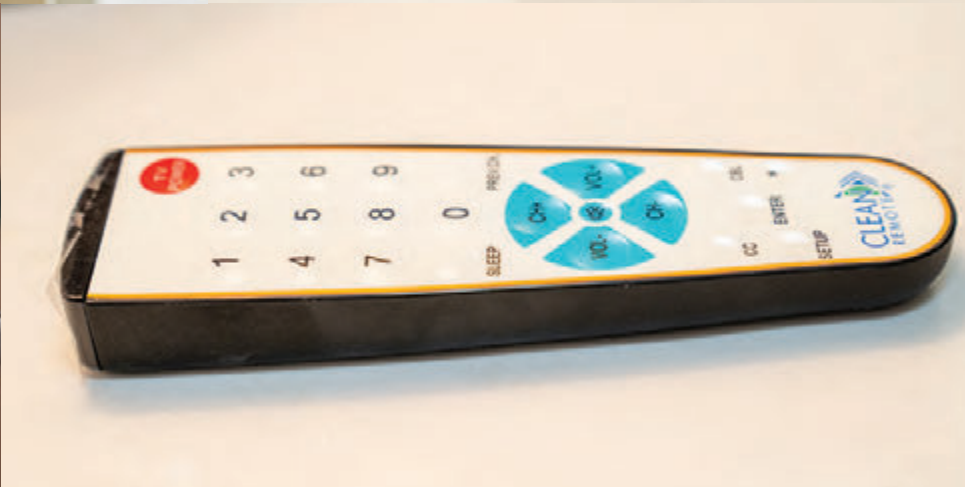


#### A1 American Terra Breeze

- A cleaning solution for your dishes that leaves them with a fresh scent
- An easy and convenient size designed and packaged for use in Hotels and Vacation Rentals
- Vegetable-based formulas enriched with natural and organic ingredients, and are cruelty-free



ELECTRONICS AND APPLIANCES



**Irons and Ironing Boards**  
**Hair Dryers**  
**Clock Radios**  
**TV Remotes**

**Televisions**  
**PTAC Units (Air conditioning)**  
**Mini-Fridges**  
**Microwaves**







**Hangers**  
**Laundry Bags**  
**Stationary**  
**Keycards**

**Pens**  
**Cups**  
**Ice Buckets and Trays**  
**Wastebaskets**  
**Luggage Racks**





**Paper Products**  
**Bath and Facial Tissue**  
**Cleaning Supplies**  
**Trash Liners**

**Laundry Supplies**  
**Janitorial Supplies**  
**Foggers**  
**Carts**



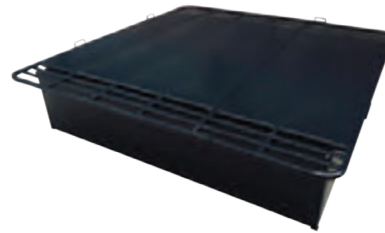


Case Goods  
Lighting

Flooring  
Window Treatments



### PLATFORM BEDS



**A1 American Platform Bed Base has adjustable legs for uneven floors. Support handles to hold mattresses in place. Rubber grips at each corner of platform base to prevent sliding.**

- Reduce bed bug infestation
- 17-inch height - perfect for any thickness mattress
- Assembly under 10 mins
- No boxspring required ever again
- All steel, heavy gauge, 2,000 lb+ load tested
- Rounded edges to prevent injuries
- Flat-panel surface prevents mattresses from sagging
- Maintains condition over time
- No lip between frame and mattress provides easy access for the housekeeping staff
- 10-year limited warranty



BRAND PARTNERS



**WINDOW & BEDDING**

- Box Spring Covers
- Window Treatments
- Drapes/Shades
- Valances/Cornices
- Bed Skirts/Bed Scarves
- Decorative Pillows
- Bedspreads
- Top Sheets
- Shower Curtains

**FF&E**

- Lighting
- Furniture
- Pool & Patio Furniture
- TV's
- Microwaves
- Refrigerators
- Flooring

**TEXTILES SOLUTIONS**

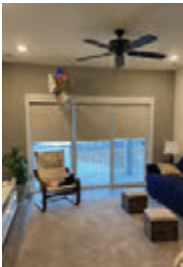
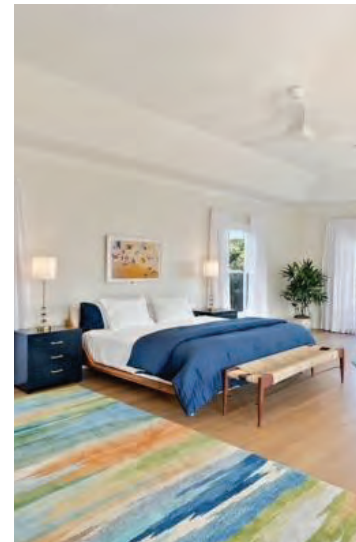
New Product Development

**HEALTHCARE**

- Cubicle Curtains & Track
- Snap on Mesh
- Cap Fitted Bedsread
- Over the Bed Tables

**SERVICES**

- Fabric Selection
- Measuring
- Design
- Delivery
- Installation



**LET US HELP YOU WITH YOUR FF&E**

**WHAT WE DO**

Renovation  
 New Construction  
 Work with Designers and Architects

Site Visits  
 Model Rooms  
 Fabric Selections

Measure  
 Installation  
 Work with construction software, drawings,  
 documents, blue prints and submittals  
 Stay within your budget



Here at A1 American we value your customer relationships and will provide them with the service and quality they deserve. Our team has a broad range of experience and knowledge to handle all your FF&E Projects from start to finish. We will work with you and your customer to ensure all project expectations, manufacturing, delivery, project management and installation where needed.

Your customer will know we are representing YOU and we are all part of A1 American Team. Our goal is to provide you with efficient support to provide FF&E to your customers. We will work creatively within their budgets, style, color schemes, and timelines. When you provide us with a qualified lead, Alisa and I will do all the work. This will provide additional sales and commission to you. We are here to help and support you.

OUR TEAM



**Douglas Lynn / VP of FF&E**

Doug has been in the textile industry since he was 16 years old. He started by working on sewing machines, cutting equipment, and some automated machines at Milco Industries. He left Milco after 11 years due to their manufacturing going off shore. After Milco, Doug started his career at Decorator Industries, where he sold interior products to the hospitality, healthcare, RV, and boating industry. Doug also set the company up to sew tents for Desert Storm, make EMT bags and gear, in addition to lift chairs for Golden Technologies. On the retail side, Doug ran a program with Camping World where they supplied interior components, by manufacturing and shipping products to people's homes. Doug has over 20 years of experience in managing FF&E. Leaving Decorator due to economic downturn in 2010. Doug went to Harbor Linen and started the WBC (window, bedding and cubicle division). The division started with just Doug but grew into a 7-person team by 2013. In 2013 Doug was asked to take over all of FF&E because the division was not profitable. Doug worked with the existing team and turned things around in 8 months, managing hundreds of jobs per year while attending trade shows, visiting customers, visiting with suppliers, and attending buyers' market with Bed Bath & Beyond buyers in New York City.



**Alisa Dill**

*Assistant to VP of FF&E*

Alisa has been an FF&E coordinator for 6 years. She has a vast knowledge of the industry. In addition, she has great rapport with workrooms, installers, fabric mills, and vendors. Alisa will be able to use her knowledge and experience to service all of your customers' needs. Alisa was Doug's assistant at Harbor Linen for the last 6 years.

OUR PROJECTS

Our ultimate goal is to provide you with solutions and finished product selections based on your brand standards, marketplace, budget, time horizon, and most importantly, your vision.

**Kalahari**

**Great wolf**

**Napoli Bay Resort**

**Eagle Aruba**

**Hard Rock / Biloxi**

**Hershey Lodge**

**Swan & Dolphin**

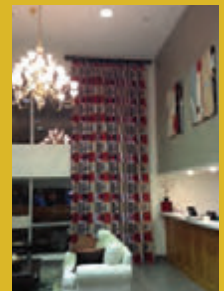
**Biltmore**

**Antler Hill Village**

**Double Tree King of Prussia**

**Carnival Cruise Line**

**Margaritaville**





**A1 AMERICAN**

QUALITY SERVICE VALUE  
— SINCE 1911 —