

# COMMERCIAL LAUNDRY CATALOG



**A1 AMERICAN**

---

## TABLE OF CONTENTS

*p.06* **Terry Towels**

*p.17* **Sheets**

*p.26* **Healthcare Sheets**

*p.32* **Blankets**

*p.38* **Underpads**

*p.40* **Other Essentials**

**Gowns**

**Pillows**

**Robes**

**Clothing Protectors**

**Other Items**



# HIGH PERFORMANCE AND AFFORDABLE PRODUCTS



## TOWELS

White, bright, long-lasting, and absorbent



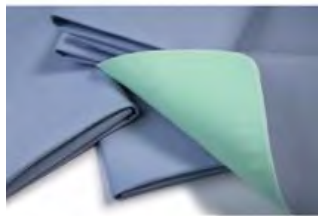
## SHEETING

Soft feel, durable, wide assortment of collections including microfiber and knitted fitted



## BLANKETS

Thermal, terry, and bath blankets



## UNDERPADS

Best in performance, absorbency, and guest comfort



## OTHER ESSENTIALS

Gowns, pillows, robes, clothing protectors, mops, aprons, and dish towels

# SUPPLY SOLUTIONS MADE SIMPLE™



# DIVERSIFIED MANUFACTURING POINTS

## • PAKISTAN

- Towels
- Sheets

## • CHINA

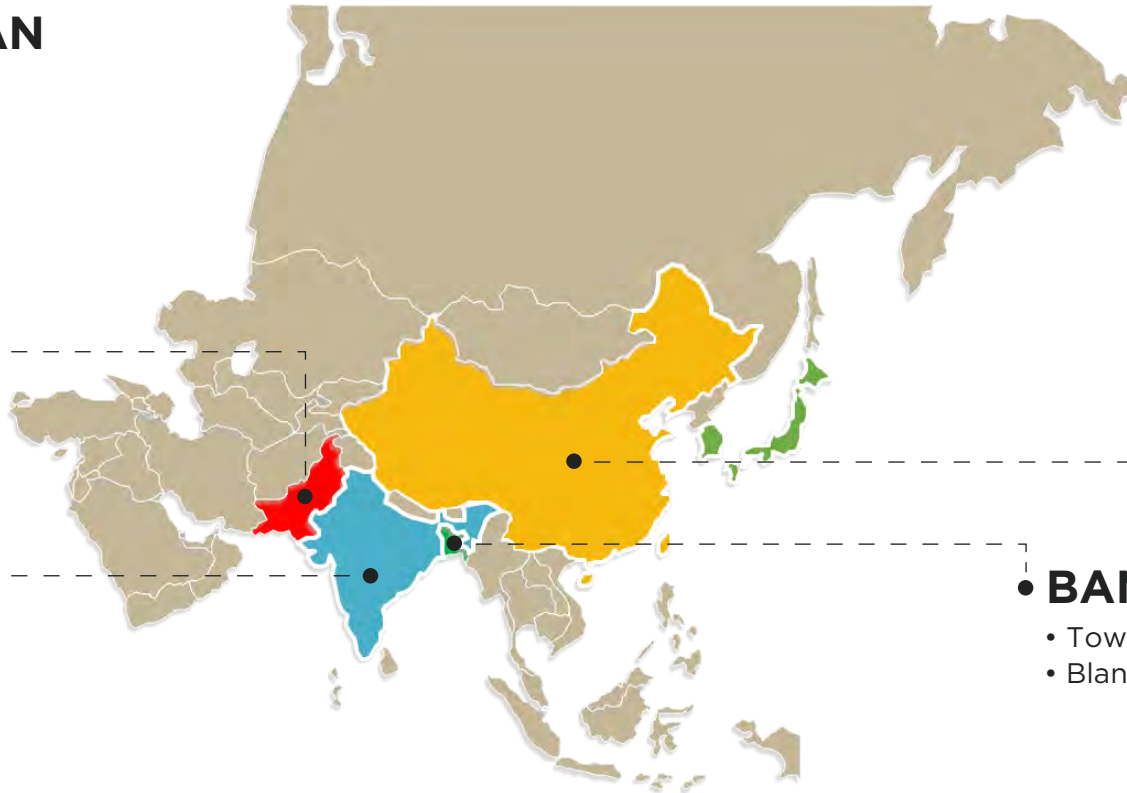
- Sheets
- Amenities
- Bedding Textiles
- Kitchen Items

## • INDIA

- Towels
- Sheets
- Blankets

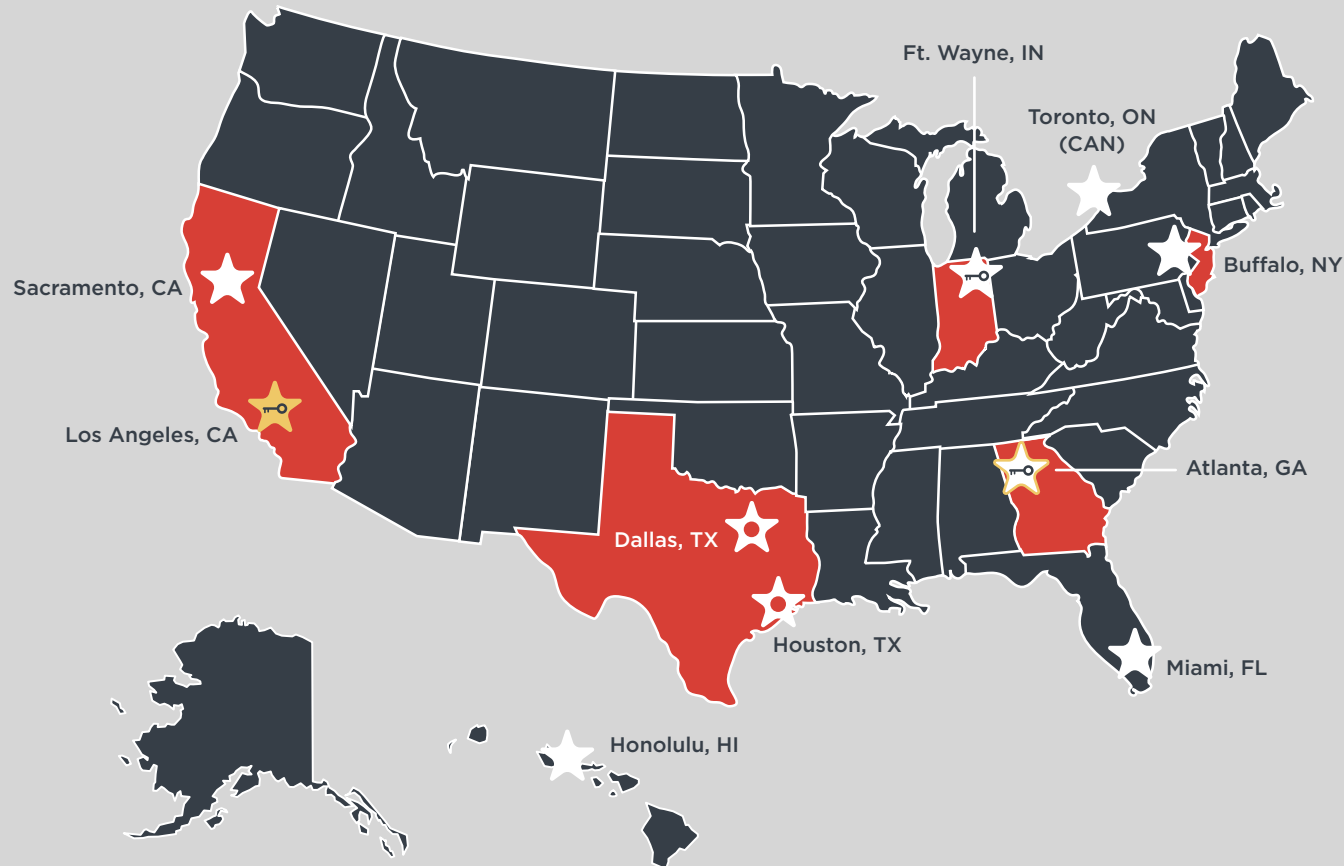
## • BANGLADESH

- Towels
- Blankets



# NATIONWIDE DISTRIBUTION

Nationwide import and stocking through strategically located and operated distribution centers



Corporate Headquarters  
and Warehouse



Distribution  
Centers



On-Demand Distribution  
Warehouse



Wyndham Stocking  
Warehouses



## TERRY TOWELS COLLECTION

### VALUE



**PREMIUM TERRY  
TOWELS**



**GOLDEN CAMELOT  
TOWELS**



**GOLDEN JEWEL  
TOWELS**

### SUPERIOR



**GOLDEN TOUCH  
TOWELS WHITE**



**GOLDEN TOUCH  
TOWELS ECRU**



**UTILITY  
TOWELS**

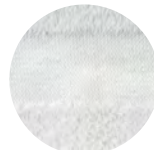


**GOLDEN JEWEL  
CABANA POOL  
TOWELS**



## TERRY TOWELS COLLECTION

### PREMIUM TERRY



**Premium Terry is our most affordable towel line with a cam border.**

- Premium Terry offers great absorbency, durability and dries quickly.
- It is made from 100% cotton utilizing lock stitched hemming to prevent unraveling.
- The line was made for the institutional hospitality, healthcare and health club markets to make a quality impression, while still priced very affordably.
- Premium Terry is packed in a bale-packed compressed bulk format which benefits our environment by reducing its carbon footprint.

### PREMIUM TERRY

*100% Cotton, Cam Border*

ITEM	SIZE	WEIGHT	CASE PACK	ITEM NUMBER
Wash Cloths	12" x 12"	.75 lb.	100 dz.	TWT12X12-LT
	12" x 12"	1.00 lb.	50 dz.	TWT12X12
Hand Towels	15" x 25"	2.25 lb.	25 dz.	TWT15X25
	16" x 27"	2.50 lb.	25 dz.	TWT16X27
Bath Towels	22" x 44"	5.75 lb.	25 dz.	TWT22X44-(25/DZ)
	24" x 48"	8.00 lb.	10 dz.	TWT24X48-8
	24" x 50"	9.50 lb.	10 dz.	TWT24X50
Bath Mats	18" x 24"	5.00 lb.	25 dz.	TWT18X24
	20" x 30"	6.50 lb.	10 dz.	TWT20X30





TERRY TOWELS COLLECTION

GOLDEN CAMELOT



Golden Camelot is our popular and cost-effective towel line, designed to out-perform standard terry towels, while retaining durability and comfort

- These towels have a cam border made from 86% cotton/14% polyester blended yarn for reduced shrinkage and longer lifespan.
- The sides are lock stitched hemming to prevent unraveling.
- The line was made for the valor driven hospitality, institutional, healthcare and health club markets to make a quality impression, while still priced very affordably.
- Golden Camelot is packed in a bale-packed compressed bulk format which benefits our environment by reducing its carbon footprint.

GOLDEN CAMELOT

86% Cotton 14% Polyester, Cam Border

ITEM	SIZE	WEIGHT	CASE PACK	ITEM NUMBER
Wash Cloths	12" x 12"	.75 lb.	50 dz.	TWGC12X12LT
	12" x 12"	1.00 lb.	50 dz.	TWGC12X12
Hand Towels	15" x 25"	2.50 lb.	25 dz.	TWGC15X25
	16" x 27"	2.75 lb.	25 dz.	TWGC16X27HW
Bath Towels	22" x 44"	6.00 lb.	25 dz.	TWGC22X44HW-25
	24" x 48"	8.00 lb.	10 dz.	TWGC24X48HW
	24" x 50"	10.00 lb.	10 dz.	TWGC24X50HW
	25" x 52"	12.00lb	10 dz.	TWGC25X52-10
Bath Mat (Golden Square*)	20" x 30"	7.00 lb.	10 dz.	TWGS20X30

\*Golden Square Bath Mats are made of 86% Cotton/14% Polyester and feature a simple square pattern border







TERRY TOWELS COLLECTION

GOLDEN JEWEL



**A1 American Golden Jewel is a quality mid-range towel line with a cam border.**

- 86/14% Cotton/Polyester blend
- Great absorbency for quick dry solutions
- Double and lock stitched hemming to prevent hems from unraveling
- The towel has a soft, plush hand feel and offers excellent absorbency and dries quickly.
- The line was specifically crafted for the hospitality market to make a lasting, quality impression, while at the same time, still priced affordably
- Golden Jewel is packed in condensed bulk format to be eco-friendly and reduce carbon footprint

GOLDEN JEWEL

86% Ring-Spun Cotton 14% Polyester, Cam Border

ITEM	SIZE	WEIGHT	CASE PACK	ITEM NUMBER
Wash Cloths	12" x 12"	1.00 lb.	50 dz.	TWGJ12X12
Hand Towels	16" x 27"	3.25 lb.	25 dz.	TWGJ16X27HW
Bath Towels	22" x 44"	6.00 lb.	25 dz.	TWGJ22X44
	24" x 48"	8.00 lb.	10 dz.	TWGJ24X48HW-10
	24" x 50"	10.50 lb.	10 dz.	TWGJ24X50HW
	25" x 52"	12.00 lb.	5 dz.	TWGJ25X52
	27" x 54"	14.00 lb.	4 dz.	TWGJ27X54





## TERRY TOWELS COLLECTION

### GOLDEN TOUCH WHITE



**A1 American Golden Touch-white is a best-selling towel line with a distinct Herringbone Dobby border.**

- 100% ringspun cotton with a Herringbone Dobby border design
- Soft and delicate feel with excellent absorbency and quick dry solution
- Crafted uniquely for the hospitality market with affordable pricing
- Includes double and lock stitched hemming
- Packed in condensed bulk format to be eco-friendly and reduce carbon footprint

### GOLDEN TOUCH - WHITE

*100% Ring-Spun Cotton, Herringbone Dobby Border*

ITEM	SIZE	WEIGHT	CASE PACK	ITEM NUMBER
Wash Cloths	12" x 12"	1.00 lb.	25 dz.	TGT12X12
	13" x 13"	1.50 lb.	25 dz.	TGT13X13
Hand Towels	16" x 27"	3.25 lb.	10 dz.	TGT16X27
	16" x 30"	4.50 lb.	10 dz.	TGT16X30
Bath Towels	24" x 50"	10.50 lb.	5 dz.	TGT24X50
	25" x 52"	12.00 lb.	3 dz.	TGT25X52
	27" x 54"	14.00 lb.	3 dz.	TGT27X54-14
	27" x 54"	15.00 lb.	3 dz.	TGT27X54-15
	27" x 54"	17.00 lb.	3 dz.	TGT27X54-17
Bath Mat (Golden Square*)	22" x 34"	10.00 lb.	5 dz.	TWGS22X34

*\*Golden Square Bath Mats are made of 86% Cotton/14% Polyester and feature a simple square pattern border*





## GOLDEN TOUCH ECRU



**A1 American Golden Touch-Ecrú is our best-selling towel line with a distinct Herringbone Dobby border.**

- 100% ringspun cotton with a Herringbone Dobby border
- Soft and delicate feel with excellent absorbency and quick dry solution
- Crafted uniquely for the hospitality and health club markets with affordable pricing
- Includes double and lock stitched hemming
- Packed in condensed bulk format to be eco-friendly and reduce carbon footprint

### GOLDEN TOUCH - ECRU

*100% Ring-Spun Cotton, Herringbone Dobby Border*

ITEM	SIZE	WEIGHT	CASE PACK	ITEM NUMBER
Wash Cloths	12" x 12"	1.00 lb.	25 dz.	TGTEC12X12
	13" x 13"	1.50 lb.	25 dz.	TGTEC13X13
Hand Towels	16" x 27"	3.25 lb.	10 dz.	TGTEC16X27
	16" x 30"	4.50 lb.	10 dz.	TGTEC16X30
Bath Towels	24" x 50"	10.50 lb.	5 dz.	TGTEC24X50
	25" x 52"	12.00 lb.	3 dz.	TGTEC25X52
	27" x 54"	14.00 lb.	3 dz.	TGTEC27X54-14
	27" x 54"	15.00 lb.	3 dz.	TGTEC27X54-15
Bath Mats	27" x 54"	17.00 lb.	3 dz.	TGTEC27X54-17
	20" x 30"	7.00 lb.	10 dz.	TGTEC20X30
	22" x 34"	10.00 lb.	5 dz.	TGTEC22X34





GOLDEN SQUARE BATH MATS



Golden Square is our universal high-absorbency quality line of bath mats.

- Made of 86% cotton and 14% polyester blended yarn that reduces shrinkage and provides a longer life span.
- Features a simple square border that compliments all decor styles.
- Soft, plush feel with exceptional absorbency and quick drying.
- The line was specifically crafted with universality in mind, and looks right at home in any hospitality, institutional, healthcare and health club environment.

GOLDEN SQUARE BATH MATS

86% cotton and 14% polyester blended yarn

ITEM	SIZE	WEIGHT	CASE PACK	ITEM NUMBER
Golden Square Bath Mats	20x30	7.00 lb.	10 dz.	TWGS20X30
	22x34	10.00 lb.	5 dz.	TWGS22X34

*\*Golden Square Bath Mats are made of 86% Cotton/14% Polyester and feature a simple square pattern border*





## UTILITY TOWELS



**A1 American Premium Terry Blue Stripe Utility towels are a preferred cost-effective towel with a distinct cam border design.**

- Unique center blue stripe design for identification
- 100% Cotton
- Lock stitched hemming to prevent unraveling
- The line was made for the institutional and healthcare markets to make a quality impression, while still priced affordably
- Offers great absorbency, longevity and dries quickly
- Premium Terry is packed in condensed bulk format to be eco-friendly and reduce carbon footprint

### PREMIUM TERRY UTILITY TOWELS

*100% Cotton, White w/ Color Stripe*

COLOR	SIZE	WEIGHT	CASE PACK	ITEM NUMBER
Center Blue Stripe Hand Towel	16" x 27"	2.62 lb.	25 dz.	TWTBS16X27
Center Blue Stripe Bath Towel	22" x 44"	5.75 lb.	25 dz.	TWTBS22X44



**Golden Camelot Center Blue Stripe Utility Towels are designed to out-perform standard terry towels.**

- These towels are made with a 86/14% Cotton/Poly 16-singles blend that reduces shrinkage and provides a longer lifespan.
- Cam border, sides are lock stitched hemming to prevent unraveling.
- Packed in a bale-packed compressed bulk format which benefits our environment by reducing its carbon footprint.
- The line was made for the value driven, institutional and healthcare markets to make a quality impression, while still priced very affordably.

### GOLDEN CAMELOT UTILITY TOWELS

*86% Cotton 14% Polyester, White w/ Color Stripe*

COLOR	SIZE	WEIGHT	CASE PACK	ITEM NUMBER
Center Blue Stripe Hand Towel	16" x 27"	2.62 lb.	25 dz.	TWGCBS16X27
Center Blue Stripe bath Towel	22" x 44"	5.75 lb.	25 dz.	TWGCBS22X44



## UTILITY



### A1 American Bar Mops are a popular and Economical cleaning tool for all purposes.

- 100% Cotton Yarn construction
- Very absorbent for basic cleaning
- Ideal for spillage and can withstand stains
- Guaranteed to last through repeated use and wash

### BAR MOPS

100% Cotton Terry, White w/ Color Stripe

COLOR	SIZE	WEIGHT	CASE PACK	ITEM NUMBER
Blue Stripe	16" x 19"	32 oz.	50 dz.	HSKBMBLUS30
Gold Stripe	16" x 19"	32 oz.	50 dz.	HSKBMGOLS30
Green Stripe	16" x 19"	32 oz.	50 dz.	HSKBMGRNS30
Solid White	16" x 19"	32 oz.	50 dz.	HSKBMT30
Solid White	16" x 19"	24 oz.	50 dz.	HSKBM24



### A1 American Route Ready Bar Towels

- Tied in 50 pcs per bundle straight out of the bale
- Enhanced yarn construction
- 100% Ringspun Cotton
- Increased softness
- Typically, laundries save at least 70¢ per dozen by freeing washroom and finishing floor operators from a whole wash cycle.
- Your customer will feel and see the difference
- Reusable with improved durability

### ROUTE READY BAR MOPS

100% Ringspun Cotton, White w/ Color Stripe

DESCRIPTION	SIZE	WEIGHT	WEIGHT	ITEM NUMBER
GOLD/BLUE STRIPE	16" X 19"	32 OZ.	50 DZ.	HSKBMGOLBLU



## CLEANING



**A1 American Microfiber Towels are versatile in use and very convenient to use for cleaning, drying, dusting or polishing.**

- Saves you money - machine wash and re-use over 500 times.
- Easy to use and leave no trace of lint or streaks behind on surfaces.
- They do not scratch and are safe to use on any surface.
- Lifts and traps dirt and moisture.
- Extremely absorbent, absorbs up to 7 times its weight in water
- Hypo-allergenic, safe for asthmatics and allergy sufferers
- Reduces bacteria

## MICROFIBER TOWELS

80% Polyester 20% Polyamide, Solid Color

COLOR	SIZE	WEIGHT	CASE PACK	ITEM NUMBER
Solid Black	16" x 16"	300 GSM	25 dz.	HSKMICROFIBERBLACK
Solid Blue	16" x 16"	300 GSM	25 dz.	HSKMICROFIBERBLUE
Solid Green	16" x 16"	300 GSM	25 dz.	HSKMICROFIBERGREEN
Solid Orange	16" x 16"	300 GSM	25 dz.	HSKMICROFIBERORANGE
Solid Red	16" x 16"	300 GSM	25 dz.	HSKMICROFIBERRED
Solid White	16" x 16"	300 GSM	25 dz.	HSKMICROFIBERW
Solid Yellow	16" x 16"	300 GSM	25 dz.	HSKMICROFIBERYELLOW
Solid Navy	16" x 16"	300 GSM	25 dz.	HSKMICROFIBERNAVY
Green Stripe	14" x 17"	300 GSM	25 dz.	HSKMICRO14X17GREEN

## THE EFFICIENT ALTERNATIVE:

- ↔ Microfiber is 1/6 the width of human hair, which means it can hold eight times its weight in water
- ↔ It has special tiny channels designed to capture dirt, bacteria and chemicals
- ⚡ Microfiber strands are split 10 times, which creates positive electric charge; the dirt and dust particles have a negative charge, attracting dirt to the microfiber
- 🦠 When bacteria is removed after cleaning with microfiber, there can be a 99% reduction in bacteria, compared to using regular cloth.
- 🧴 Using Microfiber means using less chemicals in the average cleaning, leading to less contamination.
- 🧪 According to EPA, this can result in up to a 95% reduction to cleaning chemicals in the water supply





## TERRY TOWELS COLLECTION

### UTILITY



Burgundy

Hunter Green

Royal Blue



Red

Navy

Grey



Brown

Black



**A1 american Golden Camelot colored hand towels are constructed with high quality material for maximum efficiency and a touch of color.**

- These hand towels are woven with a 86% Ringspun Cotton/14% Polyester Blend
- Offers an Open Ended Weave
- Blended Terry which will give your facility a touch of color
- Offers 100% cotton loops to provide extra absorbency for your residents
- Nine colors available and two bleach-proof options
- 16 Singles construct
- Constructed for durability and institutional use
- Silver level

### GOLDEN CAMELOT SOLID COLOR UTILITY HAND TOWELS

86% Cotton 14% Polyester, Cam Border

ITEM	SIZE	WEIGHT	CASE PACK	ITEM NUMBER
Solid Black	16" x 27"	3.00 lb.	25 dz.	BTY16X27BLACK-25DZ
Solid Brown	16" x 27"	3.00 lb.	25 dz.	BTY16X27BROWN-25DZ
Solid Burgundy	16" x 27"	3.00 lb.	25 dz.	BTY16X27BURG
Solid Dark Grey	16" x 27"	3.00 lb.	25 dz.	BTY16X27GREYDK
Solid Hunter Green	16" x 27"	3.00 lb.	25 dz.	BTY16X27HUNTERG
Solid Navy Blue	16" x 27"	3.00 lb.	25 dz.	BTY16X27NAVY
Solid Red	16" x 27"	3.00 lb.	25 dz.	BTY16X27RED
Solid Royal Blue	16" x 27"	3.00 lb.	25 dz.	BTY16X27ROYALBLUE
Solid Seafoam Green	16" x 27"	3.00 lb.	25 dz.	BTY16X27SG
Solid Black - Bleachproof	16" x 27"	3.00 lb.	10 dz.	BTYBP16X27BLACK
Solid Brown - Bleachproof	16" x 27"	3.00 lb.	10 dz.	BTYBP16X27BROWN
Black w/ White Embroidery Cosmetic	12" x 12"	1.00 lb.	25 dz.	BTY12X12BLACK







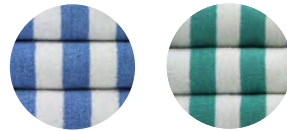
## POOL TOWELS COLLECTION

### GOLDEN JEWEL CABANA STRIPE



**A1 American Golden Jewel Pool Towels are woven with a blend of aesthetic colors to provide excellent absorbency and a lasting impression.**

- 100% Ringspun Cotton
- Woven on high quality shuttleless looms
- Utilizes double lock stitched hemming to prevent hems from unraveling
- Towel offers a soft, plush feel to the touch
- Offers excellent absorbency and quick dry
- Uniquely preferred for healthcare and health club markets to make a lasting impression
- Affordable pricing



### GOLDEN JEWEL CABANA STRIPE POOL TOWELS

*100% Ring-Spun Cotton, White w/ Color Stripes*

COLOR	SIZE	WEIGHT	CASE PACK	ITEM NUMBER
Beige 2" Cabana Stripes	24" x 50"	11.00 lb.	3 dz.	BSR24X50ZBEIGEST
Blue 2" Cabana Stripes	24" x 50"	11.00 lb.	3 dz.	BSR24X50ZBLUEST
Beige 2" Cabana Stripes	30" x 66"	13.00 lb.	3 dz.	BSR30X66ZBEIGEST
Blue 2" Cabana Stripes	30" x 66"	13.00 lb.	3 dz.	BSR30X66ZBLUEST
Beige 2" Cabana Stripes	35" x 70"	17.00 lb.	3 dz.	BSR35X70BEIGEST
Blue 2" Cabana Stripes	35" x 70"	17.00 lb.	3 dz.	BSR35X70BLUEST
Green 2" Cabana Stripes	35" x 70"	17.00 lb.	3 dz.	BSR35X70GREENST



SHEETS COLLECTION

SOLID



GOLDEN MILLS T-130  
MUSLIN SHEETS



PERCALE T-180  
DURACALE SHEETS



GOLDEN CLOUD  
MICROFIBER SHEETS



GOLDEN TOUCH T-200  
SHEETS  
SOLID WHITE & SOLID BONE

STRIPED



GOLDEN DECADENCE T-310  
SHEETS



GOLDEN SUITE T-250  
1/4" TONE-ON-TONE WHITE



GOLDEN SUITE T-250  
1" TONE-ON-TONE WHITE  
TONE-ON-TONE BONE

COLOR IDENTIFICATION HEM THREADS

Twin - White	Full - Blue	Queen - Green	King - Gold
--------------	-------------	---------------	-------------



## SHEETS COLLECTION

### MUSLIN T-130



#### A1 American Muslin T-130

- Our Draw T-130 Sheets are produced on the newest high-tech looms to produce sheets that are both durable and comfortable to sleep on.
- All items are single pick woven with yarns of 55% Cotton RICH/45% Polyester. 3.1 lb. weight fabric.

DESCRIPTION	SIZE	COLOR	ITEM NUMBER
FITTED XL	36 X 84	WHITE	SHIAF36X84
DRAWSHEET	54 X 72	WHITE	SHIDRAW54X72
DRAWSHEET	54 X 81	WHITE	SHIDRAW54X81

### PERCALE T-180 DURACALE



#### A1 American Percale T-180

- Our Percale T-180 Sheets are produced on the newest high-tech looms to produce sheets that are both durable and comfortable to sleep on.
- All items are single pick woven with yarns of 55% Cotton RICH/45% Polyester. Competition is 30/70

DESCRIPTION	SIZE	COLOR	ITEM NUMBER
PILLOWCASE	42 X 34	WHITE	SHGD42X34
FLAT	66 X 115	WHITE	SHGD66X104
	66 X 108	WHITE	SHGD66X108
	66 X 115	WHITE	SHGD66X115
FITTED	36 X 80	WHITE	SHGDAF36X80
FITTED XL	36 X 84	WHITE	SHGDAF36X84
DRAWSHEET	54 X 72	WHITE	SHGDDRAW54X72
	54 X 81	WHITE	SHGDDRAW54X81
	54 X 90	WHITE	SHGDDRAW54X90



## GOLDEN CLOUD



**A1 American Golden Cloud Microfiber sheets are engineered for a soft, crisp and comfortable feel. The sheets features a smooth and breathable finish. Your guests will feel the difference, CLEAN and FRESH.**

- Our Golden Cloud Microfiber Sheets - produced on the newest high-tech looms to produce sheets that are both durable and save time in processing and drying costs
- Woven from 100% Microfiber Polyester yarns that outlast blended sheets by twice as long
- Golden Cloud - "Ever So Soft" to the touch, resistant to wrinkling, breathable, and heavier weight than the competition

DESCRIPTION	STOCK	SIZE	ITEM NUMBER
<b>Pillowcases</b>	STANDARD	42" x 34"	SHGC42X34
<b>6 dz. / cs</b>	QUEEN	42" x 40"	SHGC42X40
	KING	42" x 46"	SHGC42X46
<b>Flat Sheets</b>	TWIN	66" x 115"	SHGC66X115
<b>2 dz. / cs.</b>	FULL	81" x 115"	SHGC81X115
	QUEEN	92" x 115"	SHGC92X115
	KING	110" x 115"	SHGCA110X115
<b>Fitted Sheets</b>	HOSP TWIN	36" x 80" x 12"	SHGCAF36X80X12
<b>2 dz. / cs.</b>	BARI TWIN	42" x 80" x 12"	SHGCAF42X80X12
	TWIN	39" x 75" x 15"	SHGCAF39X75X15
	FULL	54" x 75" x 15"	SHGCAF54X75X15
	FULL XL	54" x 80" x 15"	SHGCAF54X80X15
	QUEEN	60" x 80" x 15"	SHGCAF60X80X15
	KING	78" x 80" x 15"	SHGCAF78X80X15





## GOLDEN TOUCH T-200 SOLID WHITE



**A1 American Golden Touch T-200 Percale Sheets are manufactured uniquely to provide your guests with a comfortable and durable experience.**

- These sheets are woven with single pick yarns of 60/40% Cotton/Polyester blend
- Strong, durable yet affordable sheets that offer your guests a comfortable experience
- 12" or 15" deep pocket fit
- Available in Solid White or Bone
- Versatile and dependable sheets perfectly suitable for many industries, including:
  - Hospitality    • Spa and fitness
  - Healthcare    • Institutional
- Easy fit, center labeled
- Color coded for sizing
- No iron

*Solid White, 60/40, 12" or 15" Pockets, Hemsized 2" top and bottom*

ITEM	STOCK	SIZE	ITEM NUMBER
Pillowcases	STANDARD	42" x 36"	SHGT42X36
6 dz. / cs	QUEEN	42" x 40"	SHGT42X40
	KING	42" x 46"	SHGT42X46
Flat Sheets	TWIN	66" x 108"	SHGT66X108
2 dz. / cs.	TWIN XL	66" x 115"	SHGT66X115
	FULL	81" x 108"	SHGT81X108
	FULL XL	84" x 115"	SHGT84X115
	QUEEN	92" x 115"	SHGT92X115
	QUEEN XL	96" x 120"	SHGT96X120
	KING	110" x 115"	SHGTA110X115
	KING XL	116" x 120"	SHGTA116X120
Fitted Sheets	TWIN	39" x 80" x 12"	SHGTAF39X80
2 dz. / cs.	FULL	54" x 80" x 15"	SHGTAF54X80X14
	QUEEN	60" x 80" x 15"	SHGTAF60X80X15
	CAL KING	72" x 84" x 15"	SHGTAF72X84X15
	DUAL KING	78" x 80" x 15"	SHGTAF78X80X15



## GOLDEN TOUCH T-200 SOLID BONE



**A1 American Golden Touch T-200 Percale Sheets are manufactured uniquely to provide your guests with a comfortable and durable experience.**

- These sheets are woven with single pick yarns of 60/40% Cotton/Polyester blend
- Strong, durable yet affordable sheets that offer your guests a comfortable experience
- 12" or 15" deep pocket fit
- Available in Solid White or Bone
- Versatile and dependable sheets perfectly suitable for many industries, including:
  - Hospitality      • Spa and fitness
  - Healthcare      • Institutional
- Easy fit, center labeled
- Color coded for sizing
- No iron

*Solid Bone, 60/40, 12" or 15" Pockets, Hemsized 2" top and bottom*

ITEM	STOCK	SIZE	ITEM NUMBER
<b>Pillowcases</b>	STANDARD	42" x 36"	SHGTB42X36
6 dz./cs	QUEEN	42" x 40"	SHGTB42X40
<b>Flat Sheets</b>	KING	42" x 46"	SHGTB42X46
2 dz./cs	TWIN XL	66" x 115"	SHGTB66X115
	FULL XL	81" x 115"	SHGTB81X115
	QUEEN	90" x 115"	SHGTB90X115
	KING	108" x 115"	SHGTBA108X115
<b>Fitted Sheets</b>	TWIN	39" x 80" x 12"	SHGTBF39X80
2 dz./cs	FULL	54" x 80" x 15"	SHGTBF54X80
	QUEEN	60" x 80" x 15"	SHGTBF60X8014
	CAL KING	72" x 84" x 15"	SHGTBF72X84X14
	DUAL KING	78" x 80" x 15"	SHGTBF78X80X15



## GOLDEN DECADENCE T-310



**A1 American T-310 Golden Decadence sheets are designed to produce an all encompassing pinnacle of quality, opulence and performance and sure to add a lasting impression to your bedding collection.**

- Ultimate in luxury, quality, and performance
- Woven with a 60/40% Ring spun combed cotton/polyester blend
- Hemsized 2" top and bottom
- Blended fabric for an aesthetic look and improved texture/feel
- Basket weave pattern increases durability and elasticity
- Sheets are manufactured to be wrinkle-resistant
- 14" or 15" deep pocket fit and elastic all the way around
- Quicker laundry drying time and decreased shrinkage
- Accommodates mattress depths up to 15"
- Available in: Solid White
- Easy fit, center labeled
- Color coded for sizing
- No iron

*60/40, 14" or 15" Pockets, Hemsized 2" top and bottom*

ITEM	STOCK	SIZE	ITEM NUMBER
<b>Pillowcases</b>	STANDARD	42" x 36"	SHGDE42X36
<b>6 dz. / cs</b>	QUEEN	42" x 40"	SHGDE42X40
	KING	42" x 46"	SHGDE42X46
<b>Flat Sheets</b>	TWIN	72" x 120"	SHGDE72X120
<b>2 dz. / cs.</b>	FULL	87" x 120"	SHGDE87X120
	QUEEN	96" x 120"	SHGDE96X120
	KING XL	116" x 120"	SHGDEA116X120
<b>Fitted Sheets</b>	TWIN XL	39" x 80" x 14"	SHGDEAF39X80X14
<b>2 dz. / cs.</b>	FULL XL	54" x 80" x 14"	SHGDEAF54X80X14
	QUEEN	61" x 81" x 15"	SHGDEAF61X81X15
	CAL KING	73" x 85" x 15"	SHGDEAF73X85X15
	DUAL KING	79" x 81" x 15"	SHGDEAF79X81X15



## GOLDEN SUITE T-250 1/4" TONE-ON-TONE WHITE



**A1 American Golden Suite T-250 Percale Sheets are manufactured to maximize on durability and support while minimizing on costs.**

- These quality sheets are produced with single pick woven yarns of 60/40% Cotton/Polyester blend
- Manufactured specifically with the hospitality industry in mind to maximize affordability and durability
- Offer your guests a cotton-rich, elegant yet durable feel
- 12" or 15" Deep Pocket fit - Elastic all the way around
- Easy fit, center labeled
- Color coded for sizing
- No iron

*1/4" White/White Pinstripe, 60/40, 12" or 15" Pockets, Hemsized 2" top and bottom*

ITEM	STOCK	SIZE	ITEM NUMBER
<b>Pillowcases</b>	STANDARD	42" x 36"	SHGSAP42X36
<b>6 dz. / cs</b>	QUEEN	42" x 40"	SHGSAP42X40
	KING	42" x 46"	SHGSAP42X46
<b>Flat Sheets</b>	TWIN	66" x 115"	SHGSAP66X115
<b>2 dz. / cs.</b>	FULL	84" x 115"	SHGSAP84X115
	QUEEN	92" x 115"	SHGSAP92X115
	QUEEN XL	96" x 120"	SHGSAP96X120
	KING XL	116" x 120"	SHGSAPA116X120
<b>Fitted Sheets</b>	TWIN	39" x 80" x 12"	SHGSAPAF39X80
<b>2 dz. / cs.</b>	FULL	54" x 80" x 15"	SHGSAPAF54X80X14
	QUEEN	60" x 80" x 15"	SHGSAPAF60X80X15
	CAL KING	72" x 84" x 15"	SHGSAPAF72X84X15
	DUAL KING	78" x 80" x 15"	SHGSAPAF78X80X15





## GOLDEN SUITE T-250 1" TONE-ON-TONE WHITE



**A1 American Golden Suite T-250 Percale Sheets are manufactured to maximize on durability and support while minimizing on costs.**

- These quality sheets are produced with single pick woven yarns of 60/40% Cotton/Polyester blend
- Manufactured specifically with the hospitality industry in mind to maximize affordability and durability
- Offer your guests a cotton-rich, elegant yet durable feel
- 12" or 15" deep pocket fit & elastic all the way around
- Easy fit, center labeled
- Color coded for sizing
- No iron

*1" White/White Stripe, 60/40, 12" or 15" Pockets, Hemsize 2" top and bottom*

ITEM	STOCK	SIZE	ITEM NUMBER
<b>Pillowcases</b>	STANDARD	42" x 36"	SHGS42X36
<b>6 dz. / cs</b>	QUEEN	42" x 40"	SHGS42X40
	KING	42" x 46"	SHGS42X46
<b>Flat Sheets</b>	TWIN	66" x 115"	SHGS66X115
<b>2 dz. / cs.</b>	FULL	84" x 115"	SHGS84X115
	QUEEN	92" x 115"	SHGS92X115
	QUEEN XL	96" x 120"	SHGS96X120
	KING	110" x 115"	SHGSA110X115
	KING XL	116" x 120"	SHGSA116X120
<b>Fitted Sheets</b>	TWIN	39" x 80" x 12"	SHGSAF39X80
<b>2 dz. / cs.</b>	FULL	54" x 80" x 15"	SHGSAF54X80X14
	QUEEN	60" x 80" x 15"	SHGSAF60X80X15
	CAL KING	72" x 84" x 15"	SHGSAF72X84X15
	DUAL KING	78" x 80" x 15"	SHGSAF78X80X15



## GOLDEN SUITE T-250 1" TONE-ON-TONE BONE



**A1 American Golden Suite T-250 Percale Sheets are manufactured to maximize on durability and support while minimizing on costs.**

- These quality sheets are produced with single pick woven yarns of 60/40% Cotton/Polyester blend
- Manufactured specifically with the hospitality industry in mind to maximize affordability and durability
- Offer your guests a cotton-rich, elegant yet durable feel
- 12" or 15" deep pocket fit and elastic all the way around
- Easy fit, center labeled
- Color coded for sizing
- No iron

*1" Bone/Bone Stripe, 60/40, 12" or 15" Pockets, Hemsized 2" top and bottom*

ITEM	STOCK	SIZE	ITEM NUMBER
<b>Pillowcases</b>	STANDARD	42" x 36"	SHGSB42X36
<b>6 dz. / cs</b>	QUEEN	42" x 40"	SHGSB42X40
	KING	42" x 46"	SHGSB42X46
<b>Flat Sheets</b>	TWIN	66" x 115"	SHGSB66X115
<b>2 dz. / cs.</b>	FULL	84" x 115"	SHGSB84X115
	QUEEN	96" x 115"	SHGSB96X115
	KING	110" x 115"	SHGSBA110X115
<b>Fitted Sheets</b>	TWIN	39" x 80" x 12"	SHGSBAF39X80
<b>2 dz. / cs.</b>	FULL	54" x 80" x 15"	SHGSBAF54X80X12
	QUEEN	60" x 80" x 15"	SHGSBAF60X80X15
	CAL KING	72" x 84" x 15"	SHGSBAF72X84X15
	DUAL KING	78" x 80" x 15"	SHGSBAF78X80X15



# **HEALTHCARE SHEETS**



---

## HEALTHCARE SHEETS COLLECTION



**MISTY GREEN GURNEY  
STRETCHER SHEET**



**BLUE GURNEY  
STRETCHER SHEET**



**KNITTED FITTED  
CONTOUR SHEET**



**SURGICAL  
LINEN**



**JERSEY KNITTED  
FITTED BED LINENS**



## BLUE GURNEY STRETCHER SHEET



### A1 American Blue Gurney Stretcher Sheet

- Knit construction keeps sheet in place without elastic and reduces bunching and wrinkling resulting in increased patient comfort
- Soft, ultra knit 100% poly fabric surface is more comfortable against the patient's skin than standard sheets
- One size fits all design
- Reduce sheet usage per visit (Gurney)
- Stain release properties
- Ideal weight size and cost

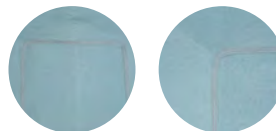
DESCRIPTION	WEIGHT	SIZE	BINDING	COLOR	ITEM NUMBER
BLUE GURNEY STRETCHER SHEET	16 oz.	25" x 77" x 5"	WHITE RIB BINDING	BLUE	SH25X77X5B

## MISTY GREEN GURNEY STRETCHER SHEET



### A1 American Misty Green Gurney Stretcher Sheet

- Knit construction keeps sheet in place without elastic and reduces bunching and wrinkling resulting in increased patient comfort
- Soft, 55% cotton/45% polyester blend fabric surface is more comfortable against the patient's skin than standard sheets
- One size fits all design
- Reduce sheet usage per visit (Gurney)
- Stain release properties
- Ideal weight size and cost



DESCRIPTION	WEIGHT	SIZE	BINDING	CASE PACK	COLOR	ITEM NUMBER
MISTY GREEN STRETCHER SHEET	21 oz.	27" x 78" x 10"	RED RIB BINDING	5 DZ	MISTY GREEN	SH27X78X10MG



KNITTED FITTED CONTOUR SHEET



A1 American Knitted Fitted Contour Sheet

- Knit construction keeps sheet in place without elastic and reduces bunching and wrinkling resulting in increased patient comfort
- Soft, ultra knit 100% poly fabric surface is more comfortable against the patient’s skin than standard sheets
- 100% polyester keeps the sheet whiter longer, resists stains and feels like cotton
- Unique stretch design fits the mattress enabling caregivers to make the bed with minimal lifting
- Better fit reduces labor since there is less need to straighten or change beds
- Stain release properties help keep sheets looking newer, longer which reduces costs

DESCRIPTION	WEIGHT	SIZE	BINDING	COLOR	ITEM NUMBER
KNITTED FITTED CONTOUR SHEET	27 oz.	32" x 86" x 8"	GREEN BINDING	WHITE	SHKNFPOLY





JERSEY KNITTED FITTED BED LINENS



A1 American Jersey Knitted Bed Linens

- Standard white healthcare fitted sheet provides more comfort to your residents
- Woven of a Polyester/Cotton Blend which gives it the stretchability needed and the softness of a fine T-Shirt
- Three weights: Standard 19 oz., Medium 21 oz. and Premium 24 oz.

DESCRIPTION	SIZE	WEIGHT	ITEM NUMBER
KNITTED FITTED	36 X 84 X 16	STANDARD 19OZ.	SHKNF36X84
KNITTED FITTED	36 X 84 X 14	PREMIUM 24OZ.	SHKNF36X84-24
KNITTED FITTED	36 X 88 X 15	PREMIUM 24OZ.	SHKNF36X88X15



SURGICAL LINEN



A1 American Surgical Linen

PILLOWCASES/FLAT SHEETS

- OR Misty Green T-180 tightly woven
- Durable 55/45 Cotton blend
- Minimal linting

TOWEL

- OR Misty Green 100% Cotton
- Absorbant and durable
- Hemmed on all four sides
- Tight huckweave for low lint performance

DESCRIPTION	MATERIAL	SIZE	CASE PACK	ITEM NUMBER
OR TOWELS MISTY GREEN ABSORBENT	55%/45% COTTON BLEND	18" x 30"	25 DZ	TOR18X30-MISTY
OR TOWELS JADE GREEN ABSORBENT	100% COTTON	18" x 32"	25 DZ	TOR18X32
T180 PILLOWCASE MISTY GREEN	55%/45% COTTON BLEND	42" x 34"	2 DZ	ZATL42X34T180-MISTY
T180 FLAT SHEET MISTY GREEN	100% COTTON BLEND	70" x 108"	5 DZ	SH70X108-MISTY





---

## BLANKETS COLLECTION



**THERMAL SPREAD  
BLANKETS**



**WHITE THERMAL  
BLANKETS**



**TERRY SPREAD  
BLANKET**



**BATH  
BLANKETS**



**BABY RECEIVING  
BLANKET**

## THERMAL SPREAD

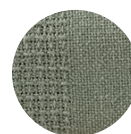


**A1 American Thermal Spread Blankets are ideal for guests looking for that woven look and feel.**

- Our in stock thermal spread blanket selections
- Tightly woven for durability with a checked square pattern design
- Heavy weight 3.5 lbs per spread blanket
- Oversized 74 x 108 - 100% cotton



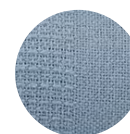
Raspberry



Green



Champagne



Blue



White

## THERMAL SPREAD BLANKETS

*3.5 lb. Solid Color, Checked Pattern, 100% Spun Cotton*

DESCRIPTION	SIZE	COLOR	ITEM NUMBER
SPREAD BLANKET	74" X 108"	Raspberry	BLK74x108THERM-RASP
SPREAD BLANKET	74" X 108"	Celery Green	BLK74x108THERM-GRN
SPREAD BLANKET	74" X 108"	Champagne	BLK74x108THERM-CHAMP
SPREAD BLANKET	74" X 108"	Blue	BLK74x108THERM-BLUE
SPREAD BLANKET	74" X 108"	White	BLK74X108THERM-3.75







BLANKETS COLLECTION

THERMAL BLANKET



**A1 American Thermal Blankets offer guests a pure cotton-rich experience with a durable finish - White**

- Our selection of standard thermal leno no snag weave blankets
- Twin Size 66 x 90 - 100% Cotton

THERMAL BLANKET

100% Cotton

DESCRIPTION	SIZE	COLOR	STYLE	ITEM NUMBER
SPREAD BLANKET	66" X 90"	White	No snag - Mini Block	BLK66X90THERM-2.5
SPREAD BLANKET	66" X 90"	White	No snag - Block Pattern	BLK66X90THERM-3





TERRY SPREAD BLANKET



A1 American Terry Spread Blanket

- Patients will feel warm and comfortable with ideal coverage
- They will notice an attractive design and border with a clean look
- Soft 100% cotton construction
- Provide item integrity with minimal shrinkage
- Greater lint reduction with tight woven weave
- High grade commercial durability for high life cycle

TERRY SPREAD BLANKET

100% Cotton

DESCRIPTION	SIZE	COLOR	ITEM NUMBER
TERRY SPREAD BLANKET	74" X 96"	White	BLK74X96-3.5WH





## BATH BLANKET



### A1 American Bath Blankets

- Weight retention
- 86% cotton/14% polyester
- Engineered for minimal shrinkage providing full patient coverage and warmth
- Significant lint reduction
- Warm and comfortable
- Perfectly designed for full coverage
- Soft and breathable
- Commercial grade durability

DESCRIPTION	SIZE	WEIGHT	CASE PACK	ITEM NUMBER
UNBLEACHED BATH BLANKET w/GRN HEM	70X90	1.75 lb.	48 pc/bale	BLK70X90-1.75
UNBLEACHED BATH BLANKET	70X90	2 lb.	50 pc/bale	BLK70X90-2
BLEACHED BATH BLANKET	72X90	2 lb.	50 pc/bale	BLKBB72x90



## BABY RECEIVING BLANKET



### A1 American Baby Receiving Blankets

- Soft warm and comfortable
- 100% Cotton Best in Class
- Ideal weight colorfast 5 lb. per dozen
- Premium quality for your service image
- Classic white with pink and blue stripe design
- Hemmed sizes to enhance service life
- 36x36 size for process (folding) efficiency
- Provide the difference

DESCRIPTION	MATERIAL	SIZE	COLOR	ITEM NUMBER
BABY RECEIVING BLANKET	100% COTTON FLANNEL	36" x 36"	WHITE WITH PINK AND BLUE STRIPES	BLK36X36



### A1 American Baby Receiving Blankets

- 100% cotton construction provides warmth and comfort to the new arrival
- Cotton-rich fabric for ultimate softness
- Classic pink and blue stripe design
- Colorfast and machine washable for easy cleaning

DESCRIPTION	SIZE	COLOR	CASE PACK	ITEM NUMBER
BABY RECEIVING BLANKET	30" x 40"	WHITE WITH PINK AND BLUE STRIPES	12DZ/CS	BLK30X40S-WHT/PB





## INFANT DIAPER

### INFANT DIAPER



#### A1 American Infant diaper

- Soft and comfortable
- 6-ply super absorbent center panel
- 100% Cotton 2-ply twill construction
- Multi-user applications environmentally friendly
- Premium quality for your service image

### INFANT DIAPER

ITEM	SIZE	CASE PACK	ITEM NUMBER
INFANT DIAPER	14" x 21"	40 Case	UPD14X20DIAPER



**The A1 American Baby Diaper is made from 100% cotton in a classic white hue. This cloth serves as a practical and gentle solution for both baby care and polishing needs. Experience the natural absorbency and durability of 100% cotton, making it an ideal choice for multiple purposes.**

- 100% Cotton 1-ply
- Birdseye weave
- Soft and comfortable
- Flat and ideal for burping

### BABY DIAPER

ITEM	SIZE	CASE PACK	ITEM NUMBER
BABY DIAPER	27" x 27"	50 DZ/Case	UPD27X27-BIRDSEYE



A close-up photograph of a blue medical underpad. The pad features white stitching along its edges and a series of white wavy lines across its surface. A yellow square is overlaid on the right side of the image, containing the text "UNDERPADS" in bold, black, uppercase letters.

## **UNDERPADS**

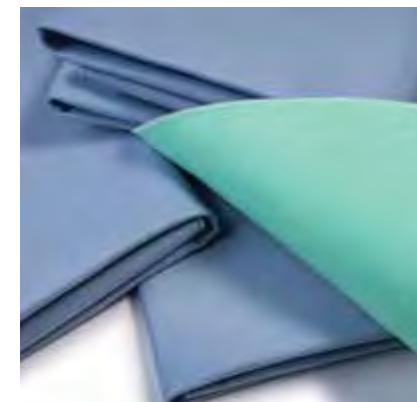




## The X Pad - “The Extreme Dry Underpads”

- Our X Pad - The eXtreme Dry Underpad, starts with our uniquely designed green brushed polyester face.
- Super absorbant soaker wicks moisture away from your resident.
- Laminated blue polyurethane barrier designed to prevent shrinkage
- The X Pad is super light weight, super absorbant, and will help reduce your laundry processing time.
- The X Pad may last almost twice as long than all other U/pads .
- Rounded Corners
- Platinum Level - Generous Size: 34 x 36

DESCRIPTION	SIZE	ITEM NUMBER
BLUE BARRIER WITH GREEN BRUSHED TOP LAYER	34" X 36"	UPXPE34X36-BLUE



## True Blue Twill Underpads

- Our True Blue Twill Underpad, starts with a heavier weight 55/45 cotton-poly face fabric.
- Quilted to our heavy weight polyester-rayon soaker.
- Both layers are sewn to our blue knitted vinyl barrier.
- Rounded corners
- Silver Level - Generous Size: 34 x 36 - Plus Size: 36 x 42

DESCRIPTION	SIZE	ITEM NUMBER
TRUE BLUE TWILL U/PAD	34" X 36"	UPTBTW34X36
TRUE BLUE TWILL PLUS U/PAD	36" X 42"	UPTBTW36X42



## Supreme Green Supersoft Poly Underpads

- Our Supreme Green Twill Underpad, starts with our Supersoft Brushed polyester face fabric.
- Quilted to our extra heavy weight 12 oz. absorbant polyester-rayon soaker.
- Both layers are sewn to our green knitted vinyl barrier.
- Rounded corners
- Gold Level - Generous Size: 34 x 36

DESCRIPTION	SIZE	ITEM NUMBER
SUPREME GREEN SUPERSOFT	34" X 36"	UPSGSP34X36





## **OTHER ESSENTIALS**







## GOWNS COLLECTION

### PATIENT GOWNS AND PRECAUTIONARY ISOLATION GOWNS



#### A1 American Standard Patient Gown with Center Tie Closure

- Our Standard Economical Patient Gown with Center Tie Back Closures
- Fabric is woven with a 50% cotton/50% polyester blend
- Note: Product does not meet California Fire Marshall Title 19

DESCRIPTION	CLOSURE	ITEM NUMBER
PATIENT GOWN	CENTER TIE	HGPATIENTG-STD



#### A1 American Premium Patient Gown with Overlap Tie Closure

- Our Premium Patient Gown was designed to keep your resident covered with two Overlap Back Closures
- Fabric is woven with our heavier 50% cotton/50% polyester blend to meet California Fire Marshall Title 19

DESCRIPTION	CLOSURE	ITEM NUMBER
PATIENT GOWN	OVERLAP SIDE TIE	HGPATIENTG-PR



#### A1 American Precautionary Gown Yellow Protective Wear Large

- Our Fluid Resistant Gown designed to protect your employees while sorting soiled linens
- Fabric is made of a fluid resistant barrier in a bright yellow color.
- Long sleeve with two back ties at the neck and waist.
- Color yellow
- Size large

DESCRIPTION	CLOSURE	ITEM NUMBER
PRECAUTIONARY GOWN	OVERLAP SIDE TIE	HGISOLGOWN-YEL





PILLOW COLLECTION

STANDARD PILLOW



**ComfiSoft White Pillows** are uniquely designed to offer guests a comforting and peaceful experience.

- Designed with a soft & breathable cover
- Anti-microbial
- 20 OZ. polyester fill
- Fire-resistant
- Fluid-resistant
- Wipe clean

DESCRIPTION	SIZE	CASE PACK	COLOR	ITEM NUMBER
COMFISOFT WHITE PILLOW STD	21" X 27"	12 EA.	20 OZ.	PILCOMFISOFT







# ROBES COLLECTION

## ROBES



### A1 American Classic Honeycomb Waffle Weave Robe

- 60% Combed Cotton 40% Polyester
- Light in weight. Easy to wash
- Convenient standard one size fits all
- Large standard size
- 2XL, 3XL and 4XL in stock
- Robes feature a sew-in belt
- Soft, comfortable and textured
- High quality construction
- Absorbent and attractive
- Improve the patient experience
- Improve financial outcomes



### CLASSIC HONEYCOMB WAFFLE WEAVE ROBE

ITEM	STYLE	SIZE	COLOR	CASE	ITEM NUMBER
HONEYCOMB WAFFLE BATHROBE	Kimono	Standard	White	12 Each	BSRROBEHNYWEAVSTD
HONEYCOMB WAFFLE BATHROBE	Kimono	2 XL	White	12 Each	BSRROBEHNYWVE 2XL
HONEYCOMB WAFFLE BATHROBE	Kimono	3 XL	White	12 Each	BSRROBEHNYWVE 3XL
HONEYCOMB WAFFLE BATHROBE	Kimono	4 XL	White	12 Each	BSRROBEHNYWVE 4XL





## ROBES COLLECTION

### ROBES



**A1 American's robes are an ideal unisex option, tailored to cater to all guest preferences.**

- Plush and soft feel
- One size fits all
- Features self-tie belt with pockets

### ROBES

ITEM	STYLE	CASE PACK	ITEM NUMBER
WAFFLE WEAVE W/TERRY LINE	R110	12 each	BSRROBEHNYCOMB
ROBE IMPERIAL TERRY	R108	12 each	BSRROBEIMPERIAL
ROBE VELOUR KIMONO	R148	12 each	BSRROBEVEL
ROBE VELOUR SHAWL COLLAR	R145	12 each	BSRROBEVELSC



WAFFLE WEAVE  
W/TERRY LINE



ROBE VELOUR  
KIMONO



ROBE VELOUR  
SHAWL COLLAR



ROBE IMPERIAL  
TERRY



CLASSIC TERRY CLOTHING PROTECTORS



- 100% Cotton Medium Weight Terry sewn with a polyester/cotton binding.
- Designed to protect your residents clothing.
- Several sizes, colors, and closures to choose from.

DESCRIPTION	COLOR	SIZE	CLOSURE	ITEM NUMBER
CLOTHING PROTECTOR	WHITE	18" X 30"	VELCRO	HSKBIB18X30/VELCRO-WH
	BLUE	18" X 30"	VELCRO	HSKBIB18X30/VELCRO-BLUE

CLASSIC TERRY CLOTHING PROTECTORS



- 100% Cotton Heavy Weight Terry sewn with a polyester/cotton binding.
- Designed to protect your residents clothing and absorbs spills.
- Several sizes, colors, and closures to choose from.

DESCRIPTION	COLOR	SIZE	CLOSURE	ITEM NUMBER
CLOTHING PROTECTOR	SIERRA STRIPE	18" X 34"	VELCRO	HSKBIB18X34/VELCRO-SST
CLOTHING PROTECTOR	SIERRA STRIPE	18" X 34"	SELF TIE	HSKBIB18X34/SELFTIE-SST
CLOTHING PROTECTOR	WHITE	20" X 36"	VELCRO	HSKBIB20X36/VELCRO-WH
CLOTHING PROTECTOR	WHITE	20" X 36"	SELF TIE	HSKBIB20X36/SELFTIE-WH





# MICROFIBER MOP HEADS



DESCRIPTION	COLOR	SIZE	CASE PACK	ITEM NUMBER
MICROFIBER 19" TWISTED CLOTH	BLUE	19"	48/EA/BOX	HSKMOPBLUE

# APRONS



DESCRIPTION	SIZE	COLOR	CASE PACK	ITEM NUMBER
SPUN POLY APRON SINGLE POCKET	29x34	White	10/DZ	ZITCAPRON-1PKT
SPUN POLY APRON SINGLE POCKET	29x34	Black	10/DZ	ZITCAPRON-1PKT-BLK
SPUN POLY APRON 3 POCKET	29x34	White	10/DZ	ZITCAPRON-3PKT
SPUN POLY APRON 3 POCKET	29x34	Black	10/DZ	ZITCAPRON-3PKT-BLK
SPUN POLY APRON NO POCKET	29x34	White	10/DZ	ZITCAPRON-WHT
SPUN POLY APRON NO POCKET	29x34	Black	10/DZ	ZITCAPRON-BLK

# DISH TOWELS



DESCRIPTION	SIZE	COLOR	ITEM NUMBER
KITCHEN TOWEL GREEN STRIPE	15x26	Green Stripe	ZITC15X26-GREEN STRIPE
KITCHEN TOWEL RED STRIPE	15x26	Red Stripe	ZITC15X26-RED STRIPE

# NAPKINS



DESCRIPTION	SIZE	COLOR	ITEM NUMBER
WHITE NAPKIN	20x20	White	ZITC20X20-WHITE
BLACK NAPKIN	20x20	Black	ZITC20X20-BLK

*\*Other colors available upon request*







# LAUNDRY BAGS

## LARGE HEAVY DUTY LAUNDRY BAGS



### Upgrade Your Laundry Operations with Our Heavy-Duty Commercial Laundry Bag

- Made out of the highest quality nylon, extremely durable, and highly resistant to rips and tears.
- 30x40 size allows for easy transport within the laundry with locking drawstring closure and machine washable.
- Available in a variety of colors and hooded and non-hooded

### LAUNDRY BAGS

ITEM	SIZE	ITEM NUMBER
GREEN LAUNDRY BAG	30 X 40 BARRIER HOODED	RCLB3040-GR
NAVY LAUNDRY BAG	30 X 40 BARRIER HOODED	HSKVALB3040N
YELLOW LAUNDRY BAG	30 X 40 BARRIER HOODED	HSKVALB3040Y



A1 American is a leading and trusted full-service distributor of quality linens to the commercial laundry industry. With a nationwide distribution network, diversified product selection and latest technology innovations, we help you source the exact sizes, fabrics, weights, and aesthetics for your business operations.

## **QUALITY**

High Performance and Affordable Products

Global Supply Chain to ensure product quality and integrity

500+ linen SKUs

## **SERVICE**

Solution Based Selling

Personalized Customer Service

Online Ordering Capabilities

## **VALUE**

Nationwide Distribution for 1-2 day lead times

Strong Financial Backing

Well Stocked Inventory Management

**SUPPLY SOLUTIONS MADE SIMPLE™**



# **A1 AMERICAN COMMERCIAL LAUNDRY SUPPLY SOLUTIONS MADE SIMPLE<sup>SM</sup>**



**A1 AMERICAN**

**833-205-2200 | [sales@a1american.com](mailto:sales@a1american.com) | [www.a1american.com](http://www.a1american.com)**